

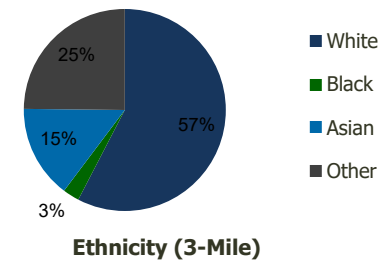
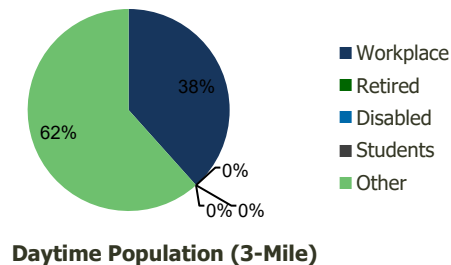
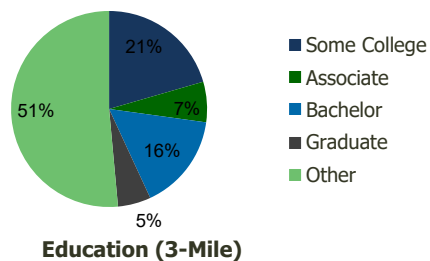
114010-Anaheim Plaza Anaheim, CA	1.00 Mile Radius	3.00 Mile Radius	5.00 Mile Radius	10.00 Mile Radius
-------------------------------------	---------------------	---------------------	---------------------	----------------------

Demographics (2021)

Current Population	36,670	296,275	696,648	2,223,216
Total Daytime Pop	41,445	317,677	764,422	2,495,913
Workplace Pop	20,328	121,888	299,297	953,680
Average Household Income	\$79,313	\$87,265	\$92,752	\$105,203
Median Household Income	\$65,992	\$70,538	\$73,777	\$82,113
Total Housing Units	10,162	81,910	201,190	655,193
Median Home Value	\$724,071	\$738,056	\$767,588	\$828,708
Bachelors Degree	14.1%	15.9%	18.5%	20.1%
Graduate Degree	4.8%	5.4%	7.2%	9.4%

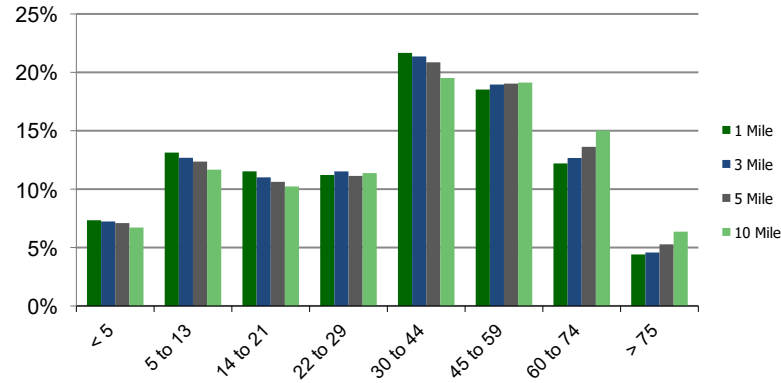
Projections (2026)

Projected Population	36,096	300,117	701,219	2,227,151
Projected 5 Year Pop Growth	-0.3%	0.3%	0.1%	0.0%
Projected Households	10,003	82,862	202,441	656,538
Projected 5 Year Household Growth	-0.3%	0.2%	0.1%	0.0%

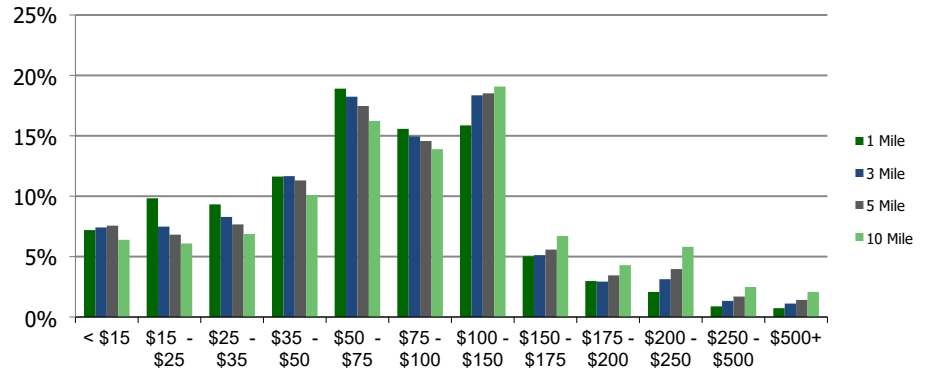


This report was produced using data from private and government sources deemed to be reliable and is herein provided without representation or warranty.

Population by Age Range



Household Income by Income Range (\$000)



114010-Anaheim Plaza Anaheim, CA	1.00 Mile Radius	3.00 Mile Radius	5.00 Mile Radius	10.00 Mile Radius
--	-------------------------	-------------------------	-------------------------	--------------------------

Population	Current Estimated Population	36,670	296,275	696,648	2,223,216
	2010 Census Population	37,053	275,944	654,463	2,139,136
	2000 Census Population	35,996	269,833	629,397	2,099,062
	Historical Annual Growth 2000 to 2010	0.29%	0.22%	0.39%	0.19%
	Estimated Annual Growth 2010 to 2020	-0.09%	0.61%	0.53%	0.33%
	Projected Annual Growth 2020 to 2025	-0.31%	0.26%	0.13%	0.04%
Households	Current Estimated Households	10,162	81,910	201,190	655,193
	2010 Census Households	10,296	76,376	188,820	629,324
	2000 Census Households	10,552	76,626	184,634	619,239
	Historical Annual Growth 2000 to 2010	-0.2%	0.0%	0.2%	0.2%
	Estimated Annual Growth 2010 to 2020	-0.1%	0.6%	0.5%	0.3%
	Projected Annual Growth 2020 to 2025	-0.3%	0.2%	0.1%	0.0%
	Population per Household	3.6	3.6	3.4	3.3
Ethnicity	White	56.2%	57.6%	52.5%	52.5%
	Black or African American	3.4%	2.6%	2.5%	2.2%
	Asian & Pacific Islander	13.5%	14.9%	22.5%	21.2%
	Other Races	26.9%	24.8%	22.6%	24.1%
	Hispanic or Latino Population	63.2%	59.8%	50.2%	46.2%
	Non Hispanic or Latino Population	36.8%	40.2%	49.8%	53.8%

This report was produced using data from private and government sources deemed to be reliable and is herein provided without representation or warranty.