

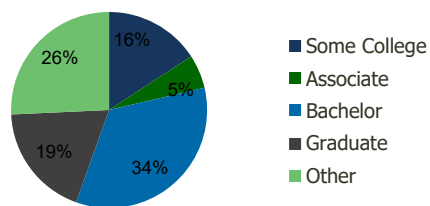
101440-Woodlawn Marketplace Charlotte, NC	1.00 Mile Radius	3.00 Mile Radius	5.00 Mile Radius	10.00 Mile Radius
--	---------------------	---------------------	---------------------	----------------------

Demographics (2020)

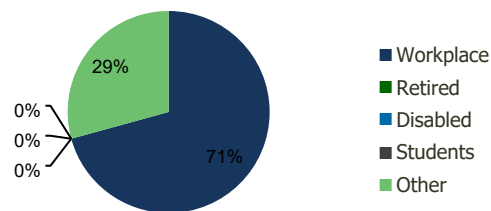
Current Population	10,192	94,084	229,992	757,941
Total Daytime Pop	24,290	172,427	515,728	1,022,574
Workplace Pop	19,593	121,961	353,744	590,017
Average Household Income	\$85,298	\$116,421	\$119,943	\$99,462
Median Household Income	\$63,255	\$75,702	\$75,665	\$65,796
Total Housing Units	4,761	41,809	104,074	308,155
Median Home Value	\$296,888	\$346,098	\$374,096	\$282,595
Bachelors Degree	33.1%	34.1%	34.9%	28.3%
Graduate Degree	13.5%	18.8%	20.0%	14.9%

Projections (2025)

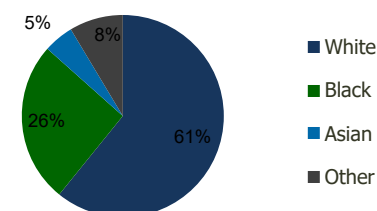
Projected Population	11,001	105,159	255,179	821,456
Projected 5 Year Pop Growth	1.5%	2.3%	2.1%	1.6%
Projected Households	5,153	47,102	117,219	335,798
Projected 5 Year Household Growth	1.6%	2.4%	2.4%	1.7%



Education (3-Mile)



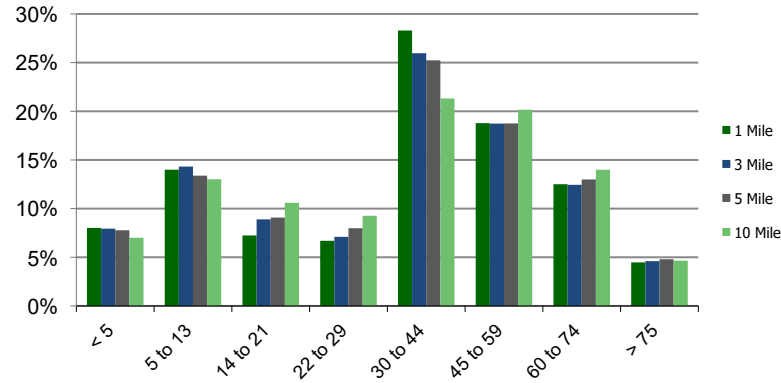
Daytime Population (3-Mile)



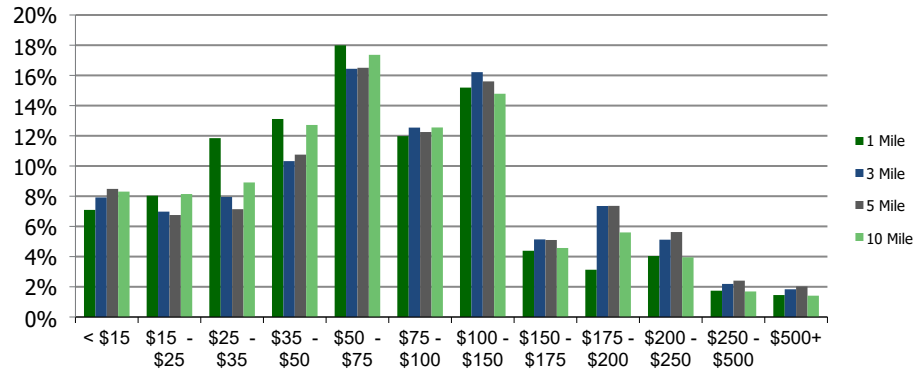
Ethnicity (3-Mile)

This report was produced using data from private and government sources deemed to be reliable and is herein provided without representation or warranty.

Population by Age Range



Household Income by Income Range (\$000)



101440-Woodlawn Marketplace Charlotte, NC	1.00 Mile Radius	3.00 Mile Radius	5.00 Mile Radius	10.00 Mile Radius
---	-------------------------	-------------------------	-------------------------	--------------------------

Population	Current Estimated Population	10,192	94,084	229,992	757,941
	2010 Census Population	8,569	72,503	180,744	623,708
	2000 Census Population	8,550	66,668	165,953	523,591
	Historical Annual Growth 2000 to 2010	0.02%	0.84%	0.86%	1.77%
	Estimated Annual Growth 2010 to 2020	1.63%	2.45%	2.27%	1.83%
	Projected Annual Growth 2020 to 2025	1.54%	2.25%	2.10%	1.62%
Households	Current Estimated Households	4,761	41,809	104,074	308,155
	2010 Census Households	3,938	31,496	78,942	250,467
	2000 Census Households	3,878	29,141	71,219	210,915
	Historical Annual Growth 2000 to 2010	0.2%	0.8%	1.0%	1.7%
	Estimated Annual Growth 2010 to 2020	1.8%	2.7%	2.6%	1.9%
	Projected Annual Growth 2020 to 2025	1.6%	2.4%	2.4%	1.7%
	Population per Household	2.1	2.2	2.1	2.4
Ethnicity	White	61.4%	60.8%	60.3%	53.1%
	Black or African American	23.0%	25.7%	28.8%	32.1%
	Asian & Pacific Islander	3.9%	4.8%	4.0%	5.1%
	Other Races	11.8%	8.6%	6.9%	9.7%
	Hispanic or Latino Population	22.7%	16.4%	12.1%	14.1%
	Non Hispanic or Latino Population	77.3%	83.6%	87.9%	85.9%

This report was produced using data from private and government sources deemed to be reliable and is herein provided without representation or warranty.