

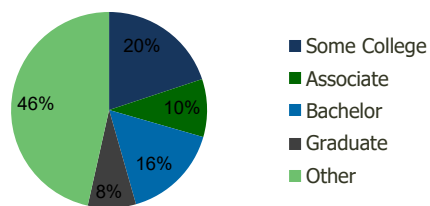
0290-Ft. Lauderdale Plaza Lauderhill,FL	1.00 Mile Radius	3.00 Mile Radius	5.00 Mile Radius	10.00 Mile Radius
--	---------------------	---------------------	---------------------	----------------------

Demographics (2018)

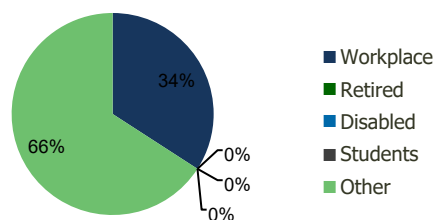
Current Population	19,423	201,096	462,587	1,175,921
Total Daytime Pop	17,321	150,770	385,423	1,332,706
Workplace Pop	7,564	51,464	146,055	584,162
Average Household Income	\$61,464	\$58,061	\$63,598	\$78,925
Median Household Income	\$48,571	\$45,368	\$48,670	\$55,488
Total Housing Units	7,756	80,264	182,119	467,940
Median Home Value	\$304,330	\$247,851	\$291,088	\$378,118
Bachelors Degree	21.4%	16.1%	16.8%	20.0%
Graduate Degree	9.0%	7.9%	8.8%	11.0%

Projections (2023)

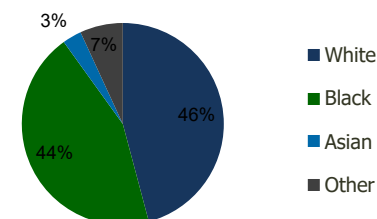
Projected Population	19,518	203,591	470,900	1,201,851
Projected 5 Year Pop Growth	0.1%	0.2%	0.4%	0.4%
Projected Households	7,786	81,294	185,243	478,098
Projected 5 Year Household Growth	0.1%	0.3%	0.3%	0.4%



Education (3-Mile)



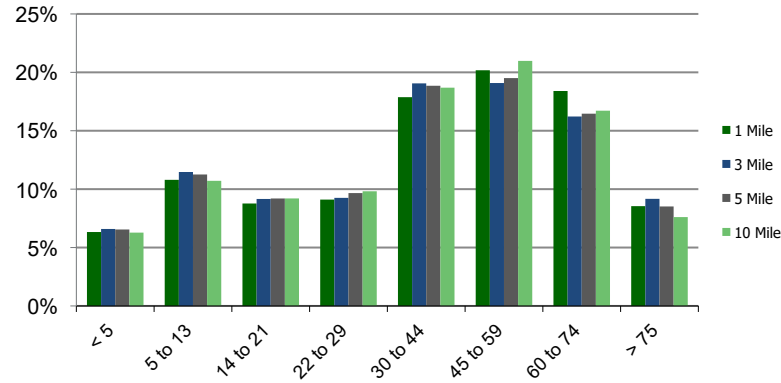
Daytime Population (3-Mile)



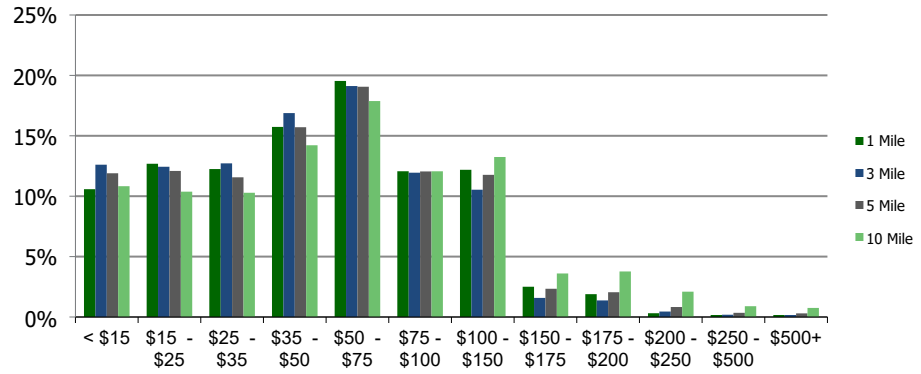
Ethnicity (3-Mile)

This report was produced using data from private and government sources deemed to be reliable and is herein provided without representation or warranty.

Population by Age Range



Household Income by Income Range (\$000)



	1.00 Mile Radius	3.00 Mile Radius	5.00 Mile Radius	10.00 Mile Radius
0290-Ft. Lauderdale Plaza				
Lauderhill, FL				

Population	Current Estimated Population	19,423	201,096	462,587	1,175,921
	2010 Census Population	18,145	183,433	415,829	1,054,088
	2000 Census Population	17,473	175,373	409,354	1,018,833
	Historical Annual Growth 2000 to 2010	0.38%	0.45%	0.16%	0.34%
	Estimated Annual Growth 2010 to 2012	0.78%	1.06%	1.23%	1.26%
	Projected Annual Growth 2012 to 2018	0.10%	0.25%	0.36%	0.44%
Households	Current Estimated Households	7,756	80,264	182,119	467,940
	2010 Census Households	7,265	73,057	163,839	419,226
	2000 Census Households	7,507	73,087	165,223	410,697
	Historical Annual Growth 2000 to 2010	-0.3%	0.0%	-0.1%	0.2%
	Estimated Annual Growth 2010 to 2012	0.7%	1.1%	1.2%	1.3%
	Projected Annual Growth 2012 to 2018	0.1%	0.3%	0.3%	0.4%
	Population per Household	2.5	2.5	2.5	2.5
Ethnicity	White	48.4%	45.9%	49.5%	60.7%
	Black or African American	41.5%	44.2%	41.2%	29.7%
	Asian & Pacific Islander	3.3%	3.1%	3.0%	3.2%
	Other Races	6.8%	6.9%	6.3%	6.4%
	Hispanic or Latino Population	21.3%	22.1%	20.5%	21.6%
	Non Hispanic or Latino Population	78.7%	77.9%	79.5%	78.4%

This report was produced using data from private and government sources deemed to be reliable and is herein provided without representation or warranty.