

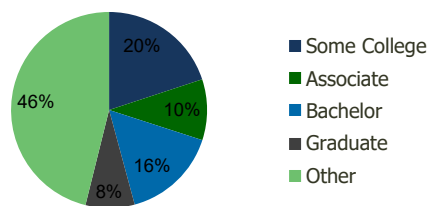
102900-Ft. Lauderdale Plaza Lauderhill, FL	1.00 Mile Radius	3.00 Mile Radius	5.00 Mile Radius	10.00 Mile Radius
---	---------------------	---------------------	---------------------	----------------------

Demographics (2020)

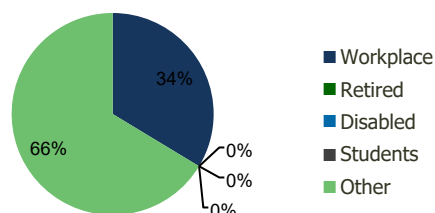
Current Population	19,664	200,145	458,006	1,180,176
Total Daytime Pop	17,158	155,365	393,229	1,363,273
Workplace Pop	7,336	52,284	145,895	586,410
Average Household Income	\$70,230	\$63,606	\$68,642	\$85,729
Median Household Income	\$54,070	\$48,217	\$51,971	\$60,435
Total Housing Units	7,833	79,654	180,007	469,617
Median Home Value	\$364,677	\$291,990	\$329,919	\$408,796
Bachelors Degree	20.1%	15.8%	17.2%	20.4%
Graduate Degree	9.6%	8.1%	9.2%	11.8%

Projections (2025)

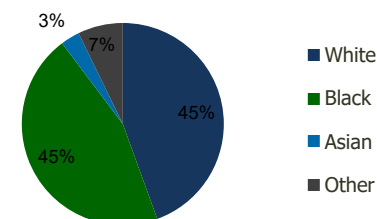
Projected Population	19,838	202,445	464,873	1,207,615
Projected 5 Year Pop Growth	0.2%	0.2%	0.3%	0.5%
Projected Households	7,889	80,555	182,550	480,391
Projected 5 Year Household Growth	0.1%	0.2%	0.3%	0.5%



Education (3-Mile)



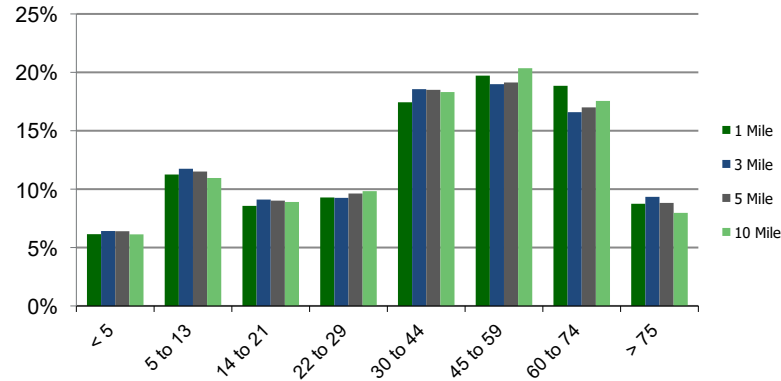
Daytime Population (3-Mile)



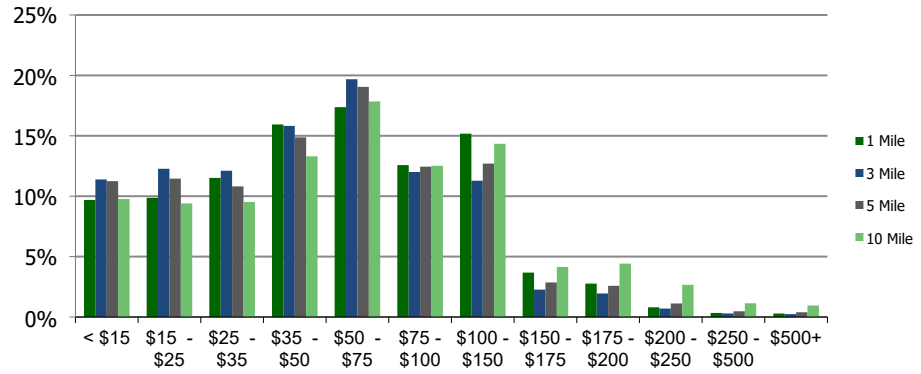
Ethnicity (3-Mile)

This report was produced using data from private and government sources deemed to be reliable and is herein provided without representation or warranty.

Population by Age Range



Household Income by Income Range (\$000)



	1.00 Mile Radius	3.00 Mile Radius	5.00 Mile Radius	10.00 Mile Radius
102900-Ft. Lauderdale Plaza				
Lauderhill, FL				

Population	Current Estimated Population	19,664	200,145	458,006	1,180,176
	2010 Census Population	18,145	183,458	415,388	1,055,119
	2000 Census Population	17,473	175,389	408,977	1,019,612
	Historical Annual Growth 2000 to 2010	0.38%	0.45%	0.16%	0.34%
	Estimated Annual Growth 2010 to 2020	0.75%	0.81%	0.91%	1.05%
	Projected Annual Growth 2020 to 2025	0.18%	0.23%	0.30%	0.46%
Households	Current Estimated Households	7,833	79,654	180,007	469,617
	2010 Census Households	7,265	73,064	163,633	419,826
	2000 Census Households	7,507	73,092	165,038	411,204
	Historical Annual Growth 2000 to 2010	-0.3%	0.0%	-0.1%	0.2%
	Estimated Annual Growth 2010 to 2020	0.7%	0.8%	0.9%	1.0%
	Projected Annual Growth 2020 to 2025	0.1%	0.2%	0.3%	0.5%
	Population per Household	2.5	2.5	2.5	2.5
Ethnicity	White	44.9%	44.5%	48.4%	60.1%
	Black or African American	43.8%	45.3%	42.1%	30.0%
	Asian & Pacific Islander	3.4%	3.0%	3.1%	3.2%
	Other Races	7.9%	7.2%	6.4%	6.6%
	Hispanic or Latino Population	21.2%	23.1%	21.8%	23.0%
	Non Hispanic or Latino Population	78.8%	76.9%	78.2%	77.0%

This report was produced using data from private and government sources deemed to be reliable and is herein provided without representation or warranty.