

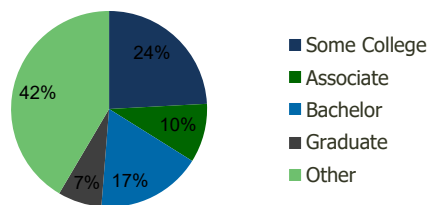
101390-Tri-City Plaza Largo, FL	1.00 Mile Radius	3.00 Mile Radius	5.00 Mile Radius	10.00 Mile Radius
------------------------------------	---------------------	---------------------	---------------------	----------------------

## Demographics (2020)

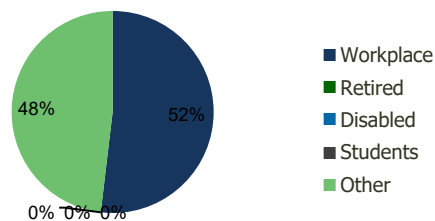
Current Population	13,087	90,923	238,374	689,983
Total Daytime Pop	15,911	119,117	339,375	794,741
Workplace Pop	7,107	61,798	164,530	361,305
Average Household Income	\$69,280	\$66,537	\$68,084	\$75,393
Median Household Income	\$48,076	\$51,041	\$50,021	\$54,546
Total Housing Units	6,151	40,921	105,909	313,794
Median Home Value	\$196,818	\$252,347	\$274,657	\$313,137
Bachelors Degree	14.2%	17.4%	16.9%	19.5%
Graduate Degree	6.8%	7.2%	7.9%	9.9%

## Projections (2025)

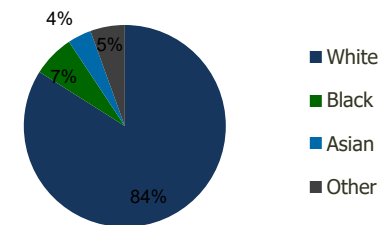
Projected Population	13,083	91,490	238,917	686,252
Projected 5 Year Pop Growth	0.0%	0.1%	0.0%	-0.1%
Projected Households	6,151	41,142	106,127	312,087
Projected 5 Year Household Growth	0.0%	0.1%	0.0%	-0.1%



Education (3-Mile)



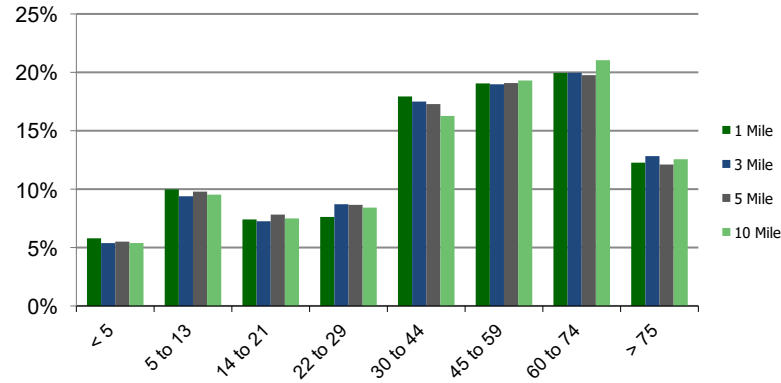
Daytime Population (3-Mile)



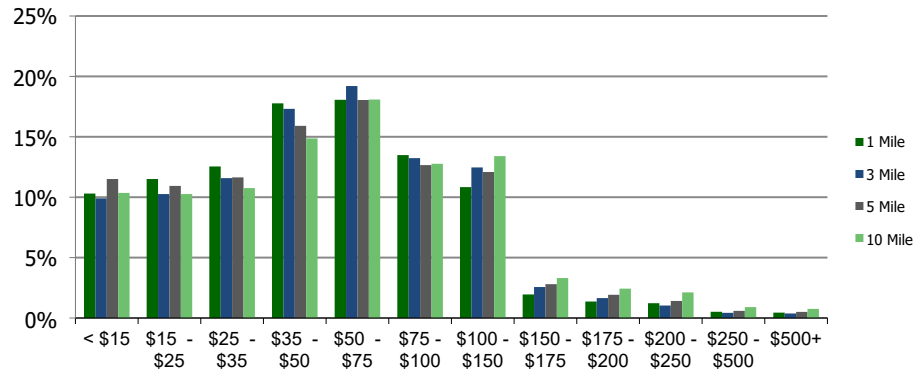
Ethnicity (3-Mile)

This report was produced using data from private and government sources deemed to be reliable and is herein provided without representation or warranty.

**Population by Age Range**



**Household Income by Income Range (\$000)**



**101390-Tri-City Plaza**  
Largo, FL

1.00 Mile  
Radius

3.00 Mile  
Radius

5.00 Mile  
Radius

10.00 Mile  
Radius

	1.00 Mile Radius	3.00 Mile Radius	5.00 Mile Radius	10.00 Mile Radius
<b>Population</b>	Current Estimated Population	13,087	90,923	238,374
	2010 Census Population	12,792	85,343	223,777
	2000 Census Population	11,558	80,977	218,482
	Historical Annual Growth 2000 to 2010	1.02%	0.53%	0.24%
	Estimated Annual Growth 2010 to 2020	0.21%	0.59%	0.59%
	Projected Annual Growth 2020 to 2025	-0.01%	0.12%	0.05%
<b>Households</b>	Current Estimated Households	6,151	40,921	105,909
	2010 Census Households	6,051	38,577	99,502
	2000 Census Households	5,187	36,024	96,826
	Historical Annual Growth 2000 to 2010	1.6%	0.7%	0.3%
	Estimated Annual Growth 2010 to 2020	0.2%	0.6%	0.6%
	Projected Annual Growth 2020 to 2025	0.0%	0.1%	0.0%
	Population per Household	2.1	2.1	2.2
<b>Ethnicity</b>	White	84.5%	84.0%	82.7%
	Black or African American	6.4%	6.7%	7.7%
	Asian & Pacific Islander	3.6%	3.8%	3.5%
	Other Races	5.5%	5.5%	6.1%
	Hispanic or Latino Population	12.5%	11.5%	12.6%
	Non Hispanic or Latino Population	87.5%	88.5%	87.4%

This report was produced using data from private and government sources deemed to be reliable and is herein provided without representation or warranty.