

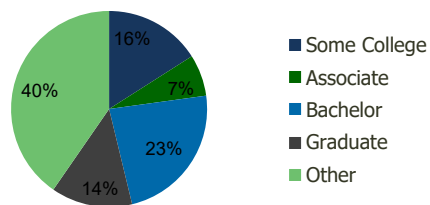
105410-Costco Plaza - Alhambra Alhambra, CA	1.00 Mile Radius	3.00 Mile Radius	5.00 Mile Radius	10.00 Mile Radius
--	---------------------	---------------------	---------------------	----------------------

Demographics (2021)

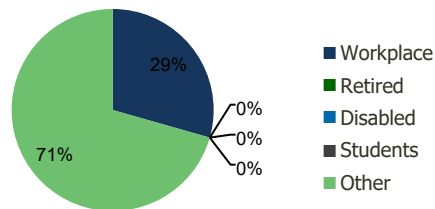
Current Population	37,646	259,597	761,297	2,773,756
Total Daytime Pop	27,429	242,023	806,243	3,008,248
Workplace Pop	9,289	71,183	252,478	1,114,711
Average Household Income	\$89,994	\$102,411	\$96,992	\$89,662
Median Household Income	\$66,708	\$71,657	\$68,010	\$61,318
Total Housing Units	13,109	87,852	243,748	887,967
Median Home Value	\$868,529	\$891,762	\$875,873	\$837,571
Bachelors Degree	22.3%	23.4%	20.6%	18.8%
Graduate Degree	12.2%	13.4%	11.4%	9.5%

Projections (2026)

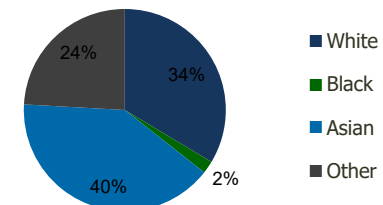
Projected Population	38,267	263,313	771,674	2,840,245
Projected 5 Year Pop Growth	0.3%	0.3%	0.3%	0.5%
Projected Households	13,332	89,145	247,387	915,581
Projected 5 Year Household Growth	0.3%	0.3%	0.3%	0.6%



Education (3-Mile)



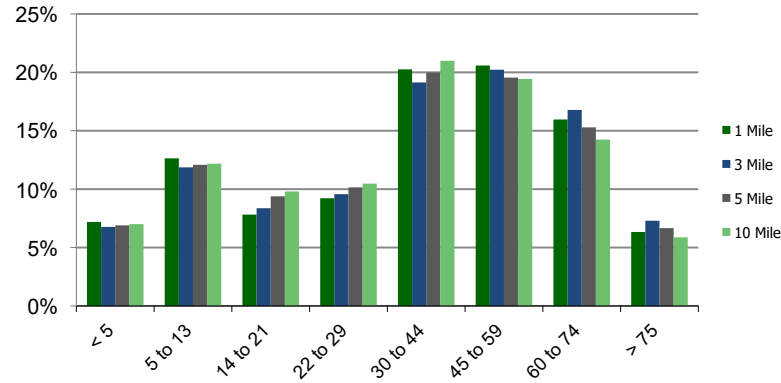
Daytime Population (3-Mile)



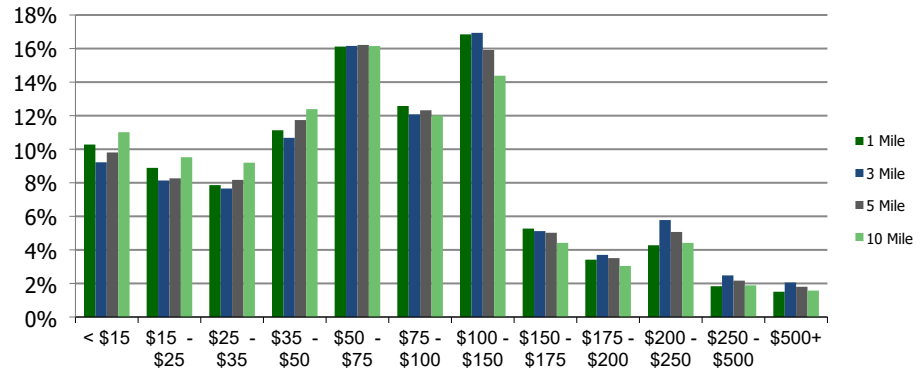
Ethnicity (3-Mile)

This report was produced using data from private and government sources deemed to be reliable and is herein provided without representation or warranty.

Population by Age Range



Household Income by Income Range (\$000)



105410-Costco Plaza - Alhambra Alhambra, CA

1.00 Mile
Radius

3.00 Mile
Radius

5.00 Mile
Radius

10.00 Mile
Radius

	1.00 Mile Radius	3.00 Mile Radius	5.00 Mile Radius	10.00 Mile Radius	
Population	Current Estimated Population	37,646	259,597	761,297	
	2010 Census Population	36,702	257,354	751,948	
	2000 Census Population	37,774	258,955	762,604	
	Historical Annual Growth 2000 to 2010	-0.29%	-0.06%	-0.14%	-0.07%
	Estimated Annual Growth 2010 to 2020	0.22%	0.07%	0.11%	0.22%
	Projected Annual Growth 2020 to 2025	0.33%	0.28%	0.27%	0.47%
Households	Current Estimated Households	13,109	87,852	243,748	
	2010 Census Households	12,755	87,051	240,294	
	2000 Census Households	12,605	86,209	234,299	
	Historical Annual Growth 2000 to 2010	0.1%	0.1%	0.3%	0.3%
	Estimated Annual Growth 2010 to 2020	0.2%	0.1%	0.1%	0.3%
	Projected Annual Growth 2020 to 2025	0.3%	0.3%	0.3%	0.6%
	Population per Household	2.9	2.9	3.1	3.1
Ethnicity	White	31.2%	33.6%	38.1%	45.7%
	Black or African American	2.0%	2.0%	2.1%	4.0%
	Asian & Pacific Islander	39.5%	40.3%	30.6%	19.5%
	Other Races	27.3%	24.1%	29.2%	30.8%
	Hispanic or Latino Population	45.7%	41.6%	52.2%	57.8%
	Non Hispanic or Latino Population	54.3%	58.4%	47.8%	42.2%

This report was produced using data from private and government sources deemed to be reliable and is herein provided without representation or warranty.