

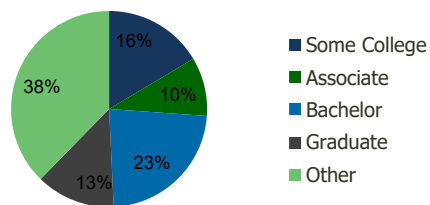
101930-Harrisburg East S.C. Harrisburg, PA	1.00 Mile Radius	3.00 Mile Radius	5.00 Mile Radius	10.00 Mile Radius
---	---------------------	---------------------	---------------------	----------------------

Demographics (2020)

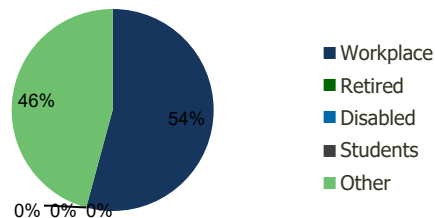
Current Population	7,698	63,163	145,572	336,664
Total Daytime Pop	13,639	82,681	205,923	459,578
Workplace Pop	7,911	44,822	100,764	249,673
Average Household Income	\$79,187	\$84,838	\$78,342	\$84,843
Median Household Income	\$65,038	\$66,801	\$60,805	\$64,781
Total Housing Units	3,270	27,173	59,591	139,638
Median Home Value	\$177,742	\$194,105	\$178,938	\$190,052
Bachelors Degree	19.0%	23.1%	19.8%	21.6%
Graduate Degree	10.3%	13.1%	11.3%	13.0%

Projections (2025)

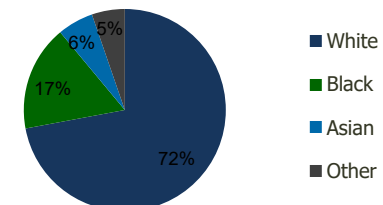
Projected Population	7,838	64,720	149,095	343,928
Projected 5 Year Pop Growth	0.4%	0.5%	0.5%	0.4%
Projected Households	3,325	27,797	61,056	142,732
Projected 5 Year Household Growth	0.3%	0.5%	0.5%	0.4%



Education (3-Mile)



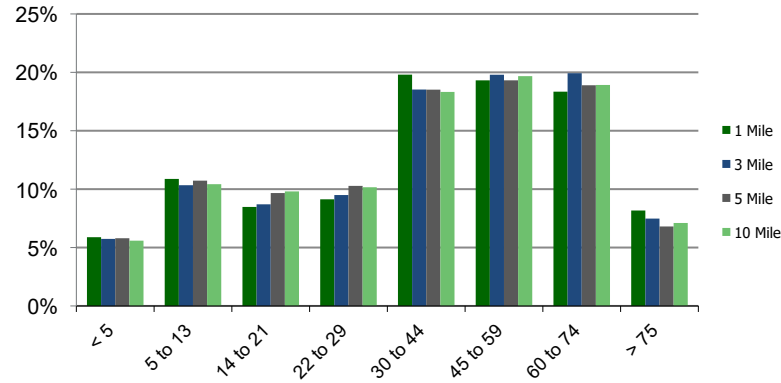
Daytime Population (3-Mile)



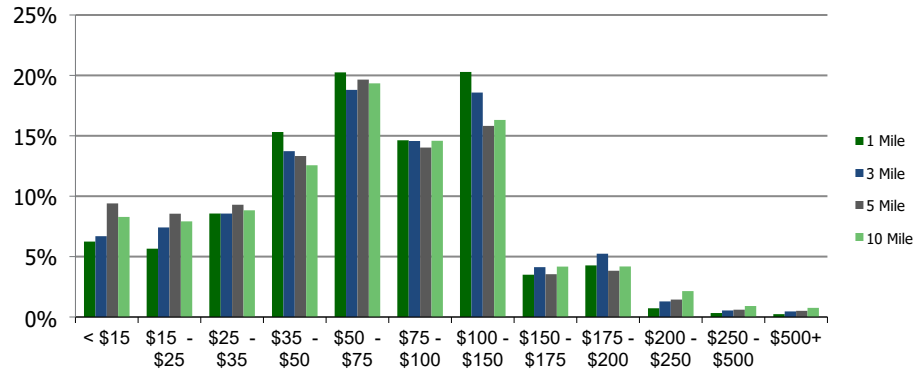
Ethnicity (3-Mile)

This report was produced using data from private and government sources deemed to be reliable and is herein provided without representation or warranty.

Population by Age Range



Household Income by Income Range (\$000)



101930-Harrisburg East S.C. Harrisburg, PA

1.00 Mile
Radius

3.00 Mile
Radius

5.00 Mile
Radius

10.00 Mile
Radius

	1.00 Mile Radius	3.00 Mile Radius	5.00 Mile Radius	10.00 Mile Radius
Population	Current Estimated Population	7,698	63,163	145,572
	2010 Census Population	7,344	60,004	138,253
	2000 Census Population	7,324	56,448	129,748
	Historical Annual Growth 2000 to 2010	0.03%	0.61%	0.64%
	Estimated Annual Growth 2010 to 2020	0.44%	0.48%	0.48%
	Projected Annual Growth 2020 to 2025	0.36%	0.49%	0.48%
Households	Current Estimated Households	3,270	27,173	59,591
	2010 Census Households	3,127	25,927	56,449
	2000 Census Households	3,125	24,094	52,164
	Historical Annual Growth 2000 to 2010	0.0%	0.7%	0.8%
	Estimated Annual Growth 2010 to 2020	0.4%	0.4%	0.5%
	Projected Annual Growth 2020 to 2025	0.3%	0.5%	0.5%
	Population per Household	2.4	2.3	2.4
Ethnicity	White	82.2%	72.1%	61.7%
	Black or African American	9.9%	16.9%	26.6%
	Asian & Pacific Islander	3.2%	5.8%	4.6%
	Other Races	4.7%	5.3%	7.2%
	Hispanic or Latino Population	6.1%	5.8%	10.2%
	Non Hispanic or Latino Population	93.9%	94.2%	89.8%

This report was produced using data from private and government sources deemed to be reliable and is herein provided without representation or warranty.