

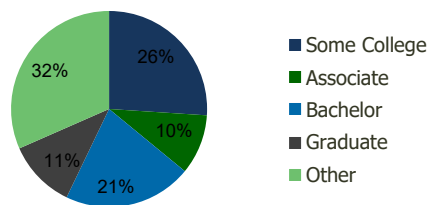
116670-North Valley S.C. Peoria, AZ	1.00 Mile Radius	3.00 Mile Radius	5.00 Mile Radius	10.00 Mile Radius
--	---------------------	---------------------	---------------------	----------------------

Demographics (2020)

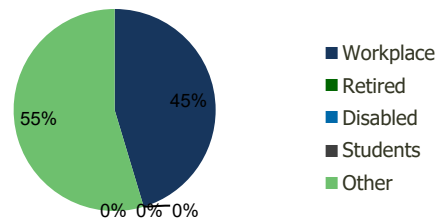
Current Population	11,462	113,739	304,405	1,094,513
Total Daytime Pop	21,188	134,047	338,953	1,204,274
Workplace Pop	13,370	60,789	123,323	470,683
Average Household Income	\$90,799	\$84,703	\$80,052	\$75,277
Median Household Income	\$78,227	\$68,967	\$63,778	\$58,341
Total Housing Units	4,871	47,794	123,529	406,873
Median Home Value	\$591,623	\$468,002	\$424,331	\$396,181
Bachelors Degree	22.8%	21.2%	18.8%	16.5%
Graduate Degree	11.1%	11.3%	10.0%	8.6%

Projections (2025)

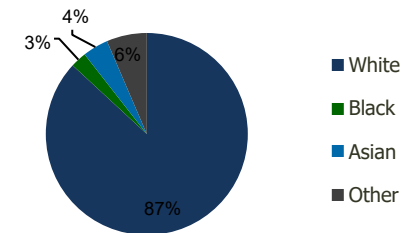
Projected Population	12,144	119,511	323,528	1,179,616
Projected 5 Year Pop Growth	1.2%	1.0%	1.2%	1.5%
Projected Households	5,173	50,251	130,875	437,273
Projected 5 Year Household Growth	1.2%	1.0%	1.2%	1.5%



Education (3-Mile)



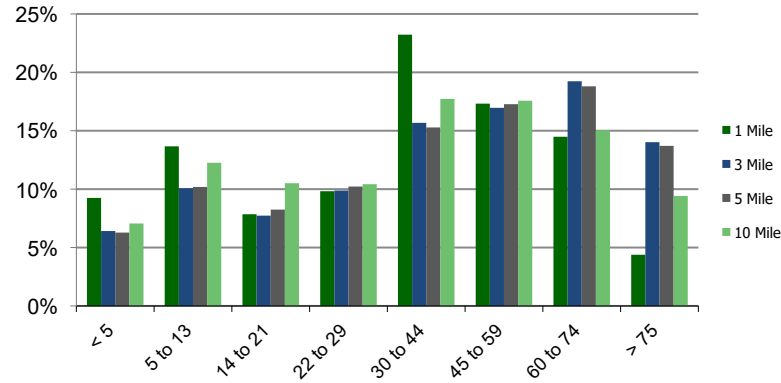
Daytime Population (3-Mile)



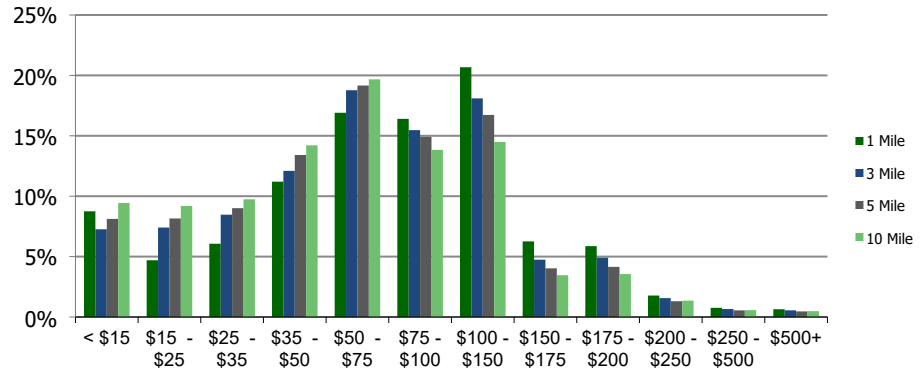
Ethnicity (3-Mile)

This report was produced using data from private and government sources deemed to be reliable and is herein provided without representation or warranty.

Population by Age Range



Household Income by Income Range (\$000)



116670-North Valley S.C.
Peoria, AZ

1.00 Mile
Radius

3.00 Mile
Radius

5.00 Mile
Radius

10.00 Mile
Radius

	1.00 Mile Radius	3.00 Mile Radius	5.00 Mile Radius	10.00 Mile Radius
Population				
Current Estimated Population	11,462	113,739	304,405	1,094,513
2010 Census Population	9,864	103,409	272,906	951,845
2000 Census Population	8,052	96,840	255,817	809,527
Historical Annual Growth 2000 to 2010	2.05%	0.66%	0.65%	1.63%
Estimated Annual Growth 2010 to 2020	1.41%	0.89%	1.02%	1.31%
Projected Annual Growth 2020 to 2025	1.16%	1.00%	1.23%	1.51%
Households				
Current Estimated Households	4,871	47,794	123,529	406,873
2010 Census Households	4,136	43,305	111,190	355,615
2000 Census Households	3,006	38,040	99,569	305,045
Historical Annual Growth 2000 to 2010	3.2%	1.3%	1.1%	1.5%
Estimated Annual Growth 2010 to 2020	1.5%	0.9%	1.0%	1.3%
Projected Annual Growth 2020 to 2025	1.2%	1.0%	1.2%	1.5%
Population per Household	2.3	2.4	2.4	2.7
Ethnicity				
White	80.3%	86.9%	85.2%	76.8%
Black or African American	3.4%	2.6%	2.9%	5.0%
Asian & Pacific Islander	8.1%	4.1%	3.5%	3.7%
Other Races	8.2%	6.5%	8.4%	14.5%
Hispanic or Latino Population	14.6%	12.3%	15.9%	29.6%
Non Hispanic or Latino Population	85.4%	87.7%	84.1%	70.4%

This report was produced using data from private and government sources deemed to be reliable and is herein provided without representation or warranty.