

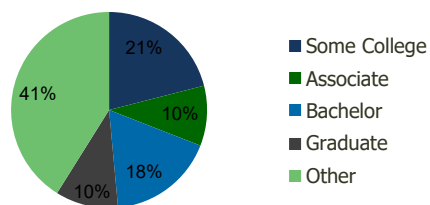
111513-Oakwood Business Center Hollywood, FL	1.00 Mile Radius	3.00 Mile Radius	5.00 Mile Radius	10.00 Mile Radius
---	---------------------	---------------------	---------------------	----------------------

Demographics (2019)

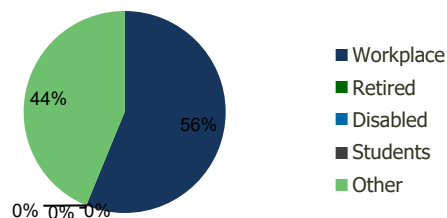
Current Population	15,376	126,788	320,686	1,245,159
Total Daytime Pop	17,115	152,059	365,571	1,363,638
Workplace Pop	9,456	85,461	194,813	592,262
Average Household Income	\$65,127	\$74,588	\$74,103	\$78,440
Median Household Income	\$47,398	\$53,156	\$52,492	\$54,417
Total Housing Units	6,232	54,768	133,166	485,774
Median Home Value	\$392,976	\$446,466	\$409,778	\$405,391
Bachelors Degree	17.4%	17.6%	17.5%	17.8%
Graduate Degree	7.9%	10.4%	9.6%	10.5%

Projections (2024)

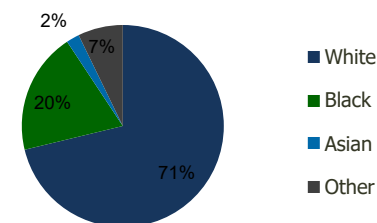
Projected Population	15,679	126,400	321,335	1,270,984
Projected 5 Year Pop Growth	0.4%	-0.1%	0.0%	0.4%
Projected Households	6,340	54,598	133,432	496,725
Projected 5 Year Household Growth	0.3%	-0.1%	0.0%	0.4%



Education (3-Mile)



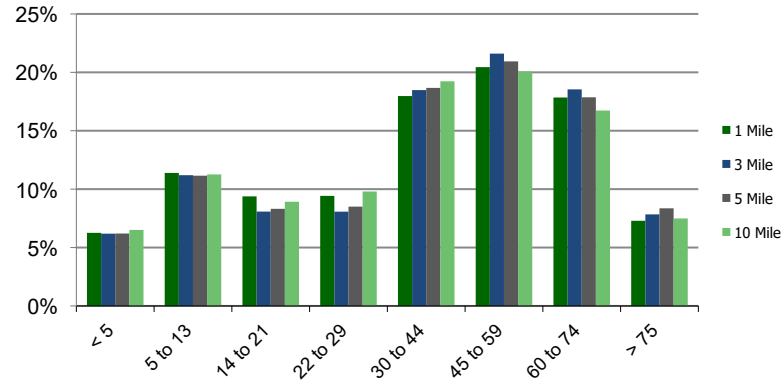
Daytime Population (3-Mile)



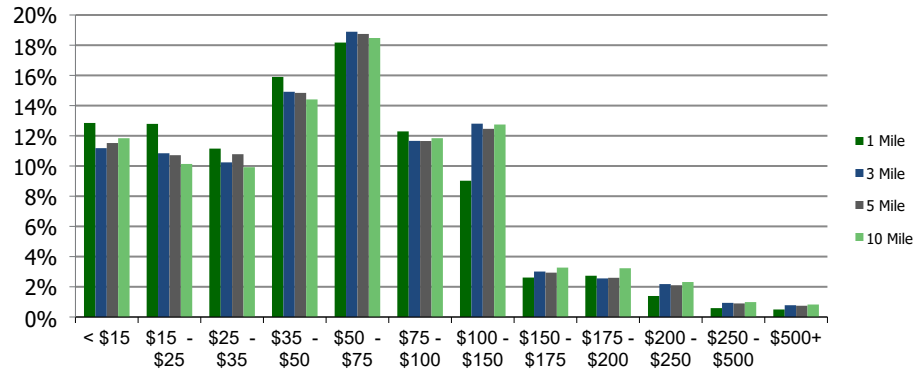
Ethnicity (3-Mile)

This report was produced using data from private and government sources deemed to be reliable and is herein provided without representation or warranty.

Population by Age Range



Household Income by Income Range (\$000)



111513-Oakwood Business Center Hollywood, FL	1.00 Mile Radius	3.00 Mile Radius	5.00 Mile Radius	10.00 Mile Radius
--	-------------------------	-------------------------	-------------------------	--------------------------

Population	Current Estimated Population	15,376	126,788	320,686	1,245,159
	2010 Census Population	13,275	117,260	295,359	1,117,770
	2000 Census Population	13,493	112,771	284,466	1,063,681
	Historical Annual Growth 2000 to 2010	-0.16%	0.39%	0.38%	0.50%
	Estimated Annual Growth 2010 to 2019	1.52%	0.80%	0.85%	1.11%
	Projected Annual Growth 2019 to 2024	0.39%	-0.06%	0.04%	0.41%
Households	Current Estimated Households	6,232	54,768	133,166	485,774
	2010 Census Households	5,414	50,623	122,375	433,398
	2000 Census Households	5,472	49,584	122,071	417,315
	Historical Annual Growth 2000 to 2010	-0.1%	0.2%	0.0%	0.4%
	Estimated Annual Growth 2010 to 2019	1.5%	0.8%	0.9%	1.2%
	Projected Annual Growth 2019 to 2024	0.3%	-0.1%	0.0%	0.4%
	Population per Household	2.4	2.3	2.4	2.5
Ethnicity	White	56.3%	71.2%	68.8%	53.7%
	Black or African American	35.8%	19.5%	20.6%	37.4%
	Asian & Pacific Islander	1.5%	2.1%	2.2%	2.4%
	Other Races	6.4%	7.2%	8.4%	6.5%
	Hispanic or Latino Population	24.5%	27.4%	32.5%	26.7%
	Non Hispanic or Latino Population	75.5%	72.6%	67.5%	73.3%

This report was produced using data from private and government sources deemed to be reliable and is herein provided without representation or warranty.