

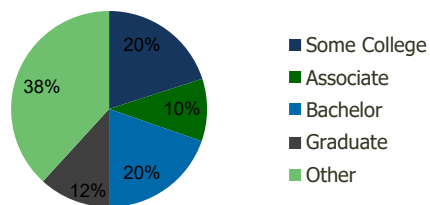
111500-Oakwood Plaza North Hollywood, FL	1.00 Mile Radius	3.00 Mile Radius	5.00 Mile Radius	10.00 Mile Radius
---	---------------------	---------------------	---------------------	----------------------

### Demographics (2020)

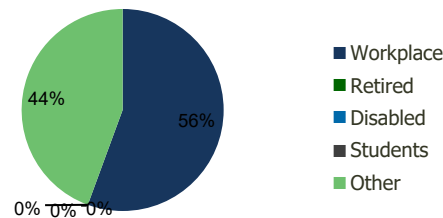
Current Population	13,412	118,720	315,630	1,227,360
Total Daytime Pop	16,923	149,053	366,434	1,387,181
Workplace Pop	9,814	82,879	192,160	590,781
Average Household Income	\$72,143	\$79,269	\$78,654	\$82,185
Median Household Income	\$48,810	\$55,720	\$54,995	\$56,972
Total Housing Units	5,253	51,453	132,172	481,414
Median Home Value	\$376,244	\$441,533	\$409,113	\$399,145
Bachelors Degree	17.6%	19.7%	18.2%	18.3%
Graduate Degree	10.9%	11.8%	10.5%	11.0%

### Projections (2025)

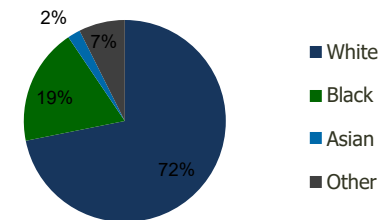
Projected Population	13,815	119,342	318,676	1,258,655
Projected 5 Year Pop Growth	0.6%	0.1%	0.2%	0.5%
Projected Households	5,404	51,718	133,559	494,804
Projected 5 Year Household Growth	0.6%	0.1%	0.2%	0.6%



Education (3-Mile)



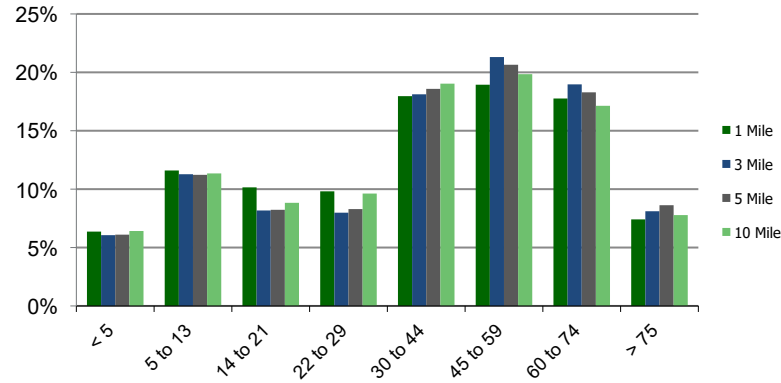
Daytime Population (3-Mile)



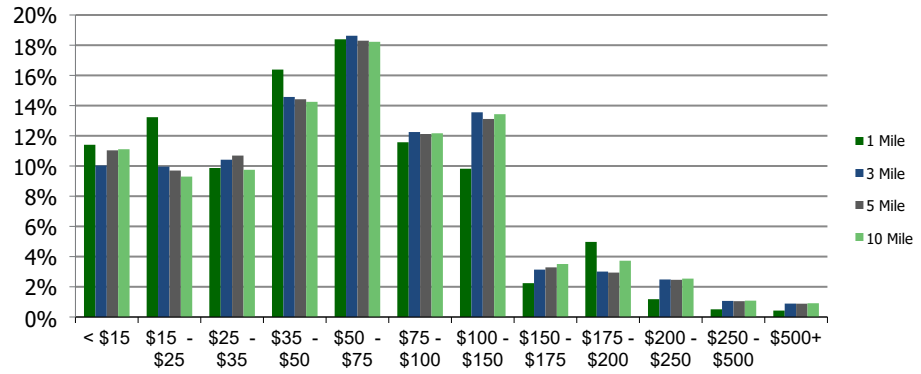
Ethnicity (3-Mile)

This report was produced using data from private and government sources deemed to be reliable and is herein provided without representation or warranty.

### Population by Age Range



### Household Income by Income Range (\$000)



111500-Oakwood Plaza North Hollywood, FL		1.00 Mile Radius	3.00 Mile Radius	5.00 Mile Radius	10.00 Mile Radius
---	--	---------------------	---------------------	---------------------	----------------------

<b>Population</b>	Current Estimated Population	13,412	118,720	315,630	1,227,360
	2010 Census Population	11,244	109,843	290,847	1,114,623
	2000 Census Population	11,311	106,002	281,653	1,060,399
	Historical Annual Growth 2000 to 2010	-0.06%	0.36%	0.32%	0.50%
	Estimated Annual Growth 2010 to 2020	1.65%	0.73%	0.76%	0.90%
	Projected Annual Growth 2020 to 2025	0.59%	0.10%	0.19%	0.50%
<b>Households</b>	Current Estimated Households	5,253	51,453	132,172	481,414
	2010 Census Households	4,429	47,607	121,377	434,832
	2000 Census Households	4,409	46,606	121,402	418,525
	Historical Annual Growth 2000 to 2010	0.0%	0.2%	0.0%	0.4%
	Estimated Annual Growth 2010 to 2020	1.6%	0.7%	0.8%	1.0%
	Projected Annual Growth 2020 to 2025	0.6%	0.1%	0.2%	0.6%
	Population per Household	2.5	2.3	2.4	2.5
<b>Ethnicity</b>	White	50.1%	71.9%	68.9%	54.1%
	Black or African American	42.9%	18.7%	19.8%	36.8%
	Asian & Pacific Islander	1.3%	2.0%	2.1%	2.4%
	Other Races	5.7%	7.4%	9.2%	6.7%
	Hispanic or Latino Population	23.9%	28.6%	34.0%	27.4%
	Non Hispanic or Latino Population	76.1%	71.4%	66.0%	72.6%

This report was produced using data from private and government sources deemed to be reliable and is herein provided without representation or warranty.