

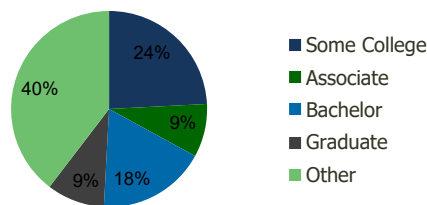
117680-Whittwood Town Center Whittier, CA	1.00 Mile Radius	3.00 Mile Radius	5.00 Mile Radius	10.00 Mile Radius
--	---------------------	---------------------	---------------------	----------------------

## Demographics (2021)

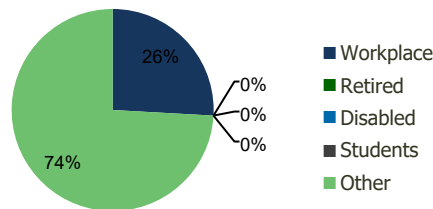
Current Population	19,299	174,901	416,434	2,170,247
Total Daytime Pop	19,050	145,897	415,354	2,275,094
Workplace Pop	6,178	37,765	164,881	828,082
Average Household Income	\$116,429	\$106,178	\$105,527	\$95,990
Median Household Income	\$103,385	\$86,958	\$85,298	\$76,569
Total Housing Units	6,396	54,685	127,023	624,526
Median Home Value	\$847,151	\$812,583	\$813,112	\$763,910
Bachelors Degree	20.0%	17.9%	19.8%	18.1%
Graduate Degree	12.2%	9.5%	10.1%	7.7%

## Projections (2026)

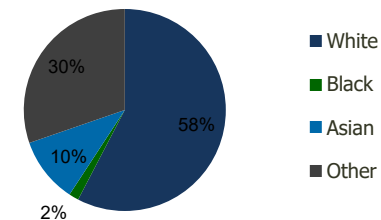
Projected Population	19,503	176,692	419,645	2,191,359
Projected 5 Year Pop Growth	0.2%	0.2%	0.2%	0.2%
Projected Households	6,461	55,257	128,015	630,389
Projected 5 Year Household Growth	0.2%	0.2%	0.2%	0.2%



Education (3-Mile)



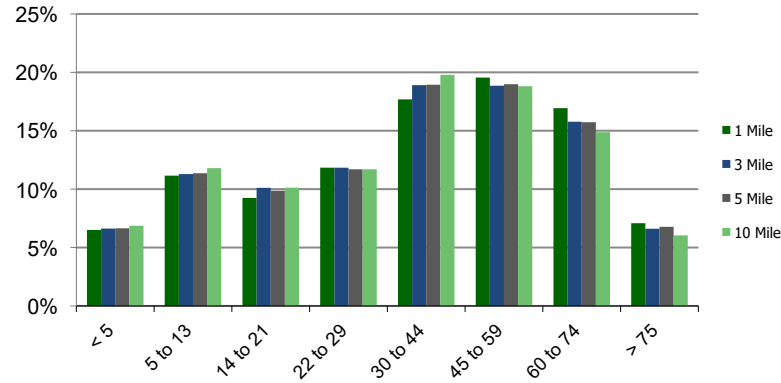
Daytime Population (3-Mile)



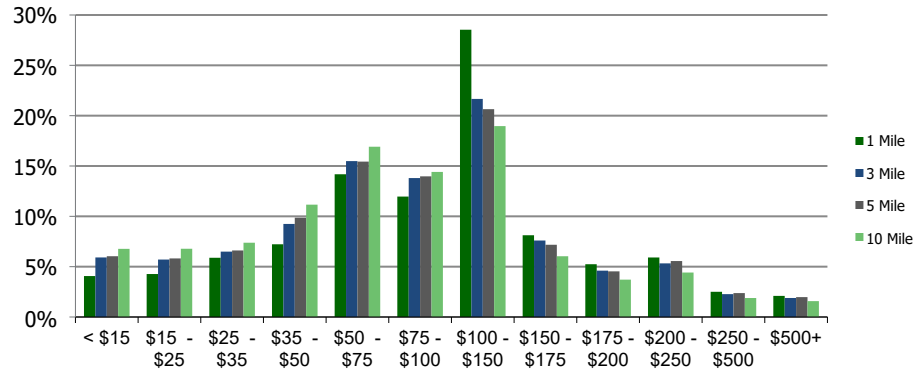
Ethnicity (3-Mile)

This report was produced using data from private and government sources deemed to be reliable and is herein provided without representation or warranty.

### Population by Age Range



### Household Income by Income Range (\$000)



### 117680-Whittwood Town Center Whittier, CA

1.00 Mile  
Radius

3.00 Mile  
Radius

5.00 Mile  
Radius

10.00 Mile  
Radius

	1.00 Mile Radius	3.00 Mile Radius	5.00 Mile Radius	10.00 Mile Radius
<b>Population</b>	Current Estimated Population	19,299	174,901	416,434
	2010 Census Population	19,355	171,547	409,740
	2000 Census Population	18,158	164,721	397,209
	Historical Annual Growth 2000 to 2010	0.64%	0.41%	0.31%
	Estimated Annual Growth 2010 to 2020	-0.02%	0.16%	0.14%
Projected Annual Growth 2020 to 2025	0.21%	0.20%	0.15%	
<b>Households</b>	Current Estimated Households	6,396	54,685	127,023
	2010 Census Households	6,394	53,603	124,873
	2000 Census Households	6,363	53,061	122,800
	Historical Annual Growth 2000 to 2010	0.0%	0.1%	0.2%
	Estimated Annual Growth 2010 to 2020	0.0%	0.2%	0.1%
	Projected Annual Growth 2020 to 2025	0.2%	0.2%	0.2%
	Population per Household	3.0	3.1	3.2
<b>Ethnicity</b>	White	68.0%	57.6%	51.1%
	Black or African American	1.0%	1.6%	1.7%
	Asian & Pacific Islander	5.1%	10.5%	17.9%
	Other Races	25.9%	30.3%	29.3%
	Hispanic or Latino Population	55.0%	57.5%	55.2%
	Non Hispanic or Latino Population	45.0%	42.5%	44.8%

This report was produced using data from private and government sources deemed to be reliable and is herein provided without representation or warranty.