

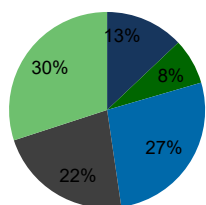
117610-Jericho Atrium Jericho, NY	1.00 Mile Radius	3.00 Mile Radius	5.00 Mile Radius	10.00 Mile Radius
--------------------------------------	---------------------	---------------------	---------------------	----------------------

## Demographics (2019)

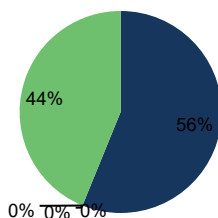
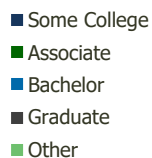
Current Population	11,346	101,538	245,852	1,159,406
Total Daytime Pop	21,193	152,054	361,726	1,466,257
Workplace Pop	14,054	85,401	187,023	722,296
Average Household Income	\$198,716	\$169,342	\$164,835	\$147,990
Median Household Income	\$148,916	\$128,443	\$123,423	\$112,227
Total Housing Units	3,944	31,442	78,925	381,090
Median Home Value	\$965,031	\$704,179	\$673,379	\$659,698
Bachelors Degree	35.1%	27.2%	25.8%	24.1%
Graduate Degree	33.0%	22.3%	21.7%	19.8%

## Projections (2024)

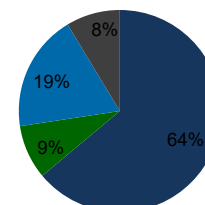
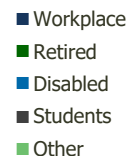
Projected Population	11,254	101,024	244,466	1,159,997
Projected 5 Year Pop Growth	-0.2%	-0.1%	-0.1%	0.0%
Projected Households	3,911	31,260	78,450	381,429
Projected 5 Year Household Growth	-0.2%	-0.1%	-0.1%	0.0%



Education (3-Mile)



Daytime Population (3-Mile)

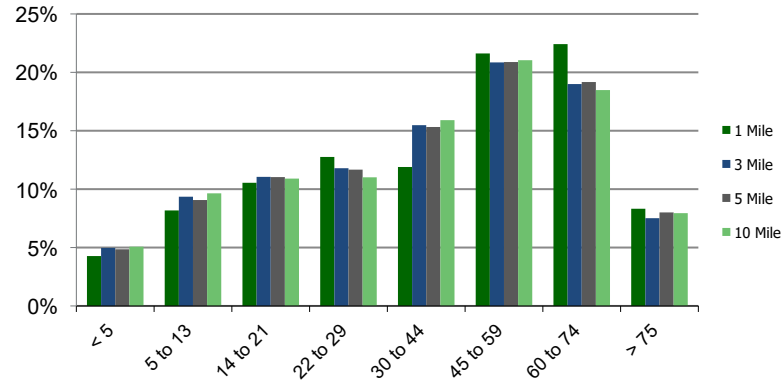


Ethnicity (3-Mile)

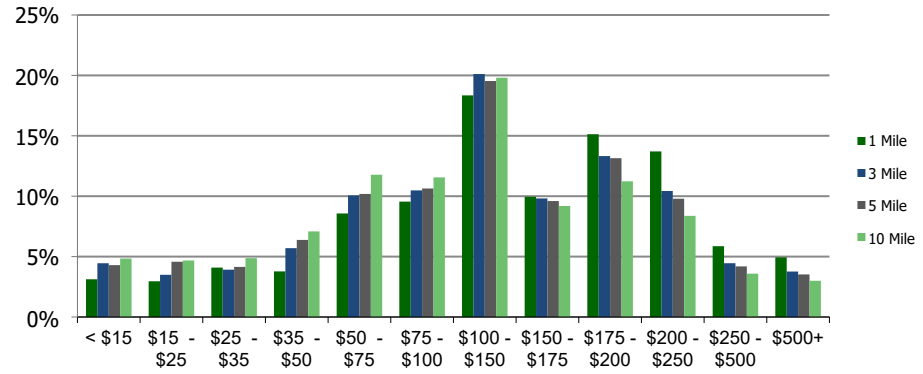


This report was produced using data from private and government sources deemed to be reliable and is herein provided without representation or warranty.

**Population by Age Range**



**Household Income by Income Range (\$000)**



**117610-Jericho Atrium**  
Jericho, NY

1.00 Mile Radius

3.00 Mile Radius

5.00 Mile Radius

10.00 Mile Radius

	1.00 Mile Radius	3.00 Mile Radius	5.00 Mile Radius	10.00 Mile Radius
<b>Population</b>	Current Estimated Population	11,346	101,538	245,852
	2010 Census Population	11,248	100,683	243,961
	2000 Census Population	10,964	97,826	239,538
	Historical Annual Growth 2000 to 2010	0.26%	0.29%	0.18%
	Estimated Annual Growth 2010 to 2019	0.09%	0.09%	0.08%
	Projected Annual Growth 2019 to 2024	-0.16%	-0.10%	-0.11%
<b>Households</b>	Current Estimated Households	3,944	31,442	78,925
	2010 Census Households	3,917	31,209	78,266
	2000 Census Households	3,907	31,525	77,284
	Historical Annual Growth 2000 to 2010	0.0%	-0.1%	0.1%
	Estimated Annual Growth 2010 to 2019	0.1%	0.1%	0.1%
	Projected Annual Growth 2019 to 2024	-0.2%	-0.1%	-0.1%
	Population per Household	2.9	3.2	3.0
<b>Ethnicity</b>	White	67.2%	63.9%	73.3%
	Black or African American	2.5%	8.7%	5.6%
	Asian & Pacific Islander	27.5%	18.8%	13.5%
	Other Races	2.8%	8.6%	7.5%
	Hispanic or Latino Population	3.8%	13.5%	12.9%
	Non Hispanic or Latino Population	96.2%	86.5%	87.1%

This report was produced using data from private and government sources deemed to be reliable and is herein provided without representation or warranty.