

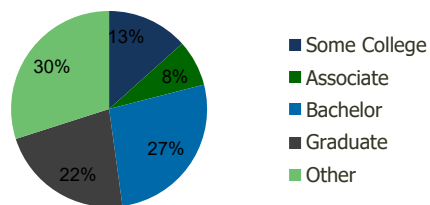
1761-Jericho Atrium Jericho, NY	1.00 Mile Radius	3.00 Mile Radius	5.00 Mile Radius	10.00 Mile Radius
------------------------------------	---------------------	---------------------	---------------------	----------------------

## Demographics (2017)

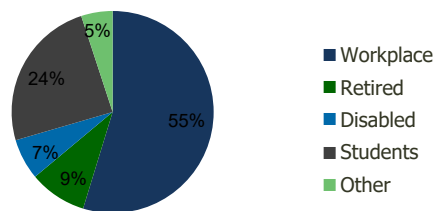
Current Population	11,597	100,994	246,468	1,168,410
Total Daytime Pop	18,980	164,675	371,081	1,478,146
Workplace Pop	12,450	90,125	194,574	734,504
Average Household Income	\$188,303	\$154,029	\$150,537	\$135,995
Median Household Income	\$140,194	\$119,017	\$114,772	\$103,639
Total Housing Units	4,013	31,286	79,065	384,269
Median Home Value	\$839,586	\$627,434	\$596,153	\$585,755
Bachelors Degree	34.3%	26.8%	25.6%	23.7%
Graduate Degree	33.3%	22.2%	21.5%	19.4%

## Projections (2022)

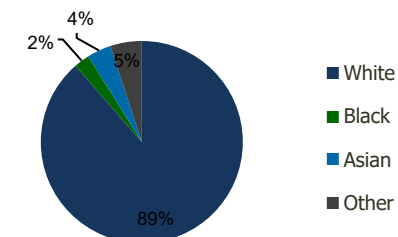
Projected Population	11,469	100,363	244,887	1,166,785
Projected 5 Year Pop Growth	-0.2%	-0.1%	-0.1%	0.0%
Projected Households	3,968	31,053	78,507	383,866
Projected 5 Year Household Growth	-0.2%	-0.1%	-0.1%	0.0%



Education (3-Mile)



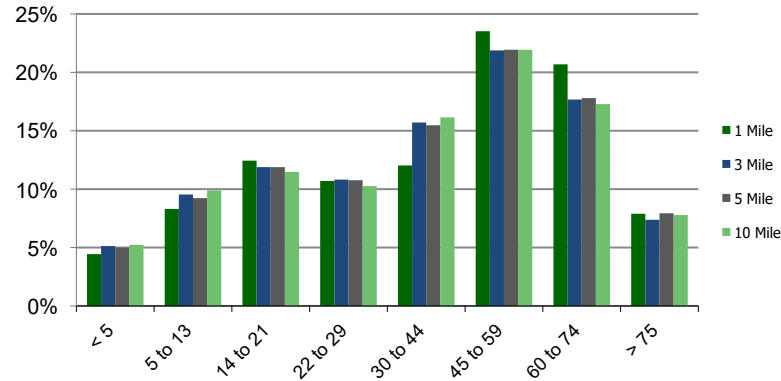
Daytime Population (3-Mile)



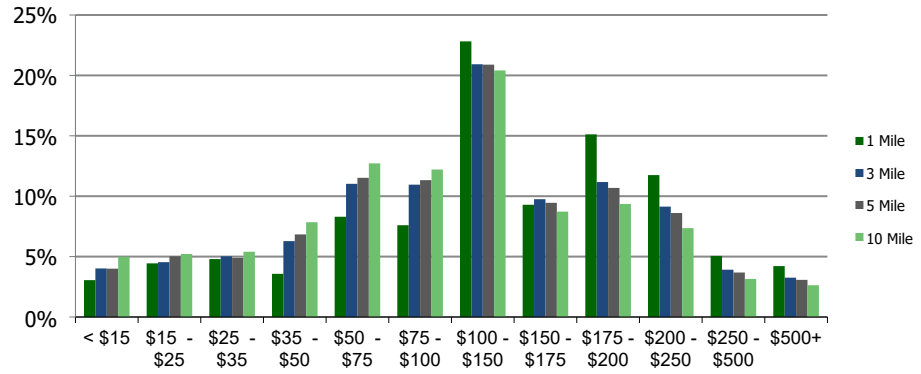
Ethnicity (3-Mile)

This report was produced using data from private and government sources deemed to be reliable and is herein provided without representation or warranty.

**Population by Age Range**



**Household Income by Income Range (\$000)**



<b>1761-Jericho Atrium</b> Jericho, NY	1.00 Mile Radius	3.00 Mile Radius	5.00 Mile Radius	10.00 Mile Radius
---	------------------	------------------	------------------	-------------------

<b>Population</b>	Current Estimated Population	11,597	100,994	246,468	1,168,410
	2010 Census Population	11,526	99,920	244,035	1,152,838
	2000 Census Population	11,238	97,202	239,159	1,136,292
	Historical Annual Growth 2000 to 2010	0.25%	0.28%	0.20%	0.14%
	Estimated Annual Growth 2010 to 2012	0.08%	0.14%	0.13%	0.17%
	Projected Annual Growth 2012 to 2017	-0.22%	-0.13%	-0.13%	-0.03%
<b>Households</b>	Current Estimated Households	4,013	31,286	79,065	384,269
	2010 Census Households	3,999	31,006	78,267	378,473
	2000 Census Households	3,986	31,313	77,208	373,566
	Historical Annual Growth 2000 to 2010	0.0%	-0.1%	0.1%	0.1%
	Estimated Annual Growth 2010 to 2012	0.0%	0.1%	0.1%	0.2%
	Projected Annual Growth 2012 to 2017	-0.2%	-0.1%	-0.1%	0.0%
	Population per Household	2.9	3.2	3.0	3.0
<b>Ethnicity</b>	White	68.5%	65.1%	74.5%	71.5%
	Black or African American	2.3%	8.8%	5.6%	11.1%
	Asian & Pacific Islander	26.3%	17.7%	12.7%	8.3%
	Other Races	2.9%	8.5%	7.2%	9.1%
	Hispanic or Latino Population	4.2%	13.8%	12.7%	15.6%
	Non Hispanic or Latino Population	95.8%	86.2%	87.3%	84.4%

This report was produced using data from private and government sources deemed to be reliable and is herein provided without representation or warranty.