

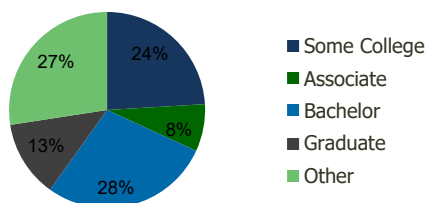
117580-Grand Parkway Marketplace II Spring, TX	1.00 Mile Radius	3.00 Mile Radius	5.00 Mile Radius	10.00 Mile Radius
---	---------------------	---------------------	---------------------	----------------------

Demographics (2019)

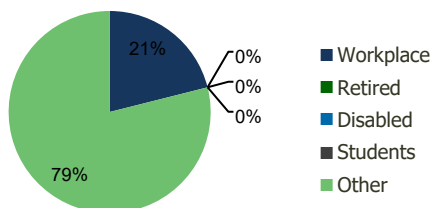
Current Population	9,122	70,612	209,623	810,805
Total Daytime Pop	11,658	52,256	154,333	773,859
Workplace Pop	2,316	11,011	46,627	323,193
Average Household Income	\$106,479	\$115,213	\$123,281	\$109,719
Median Household Income	\$90,026	\$92,742	\$93,450	\$80,590
Total Housing Units	2,831	22,905	71,462	286,550
Median Home Value	\$237,792	\$244,532	\$260,714	\$249,064
Bachelors Degree	29.8%	28.0%	28.9%	26.3%
Graduate Degree	13.1%	12.7%	14.4%	12.7%

Projections (2024)

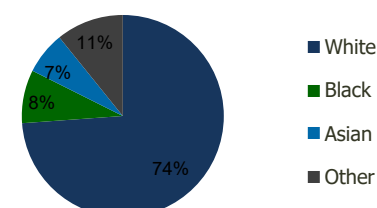
Projected Population	11,097	85,772	249,427	905,865
Projected 5 Year Pop Growth	4.0%	4.0%	3.5%	2.2%
Projected Households	3,445	27,861	84,762	319,401
Projected 5 Year Household Growth	4.0%	4.0%	3.5%	2.2%



Education (3-Mile)



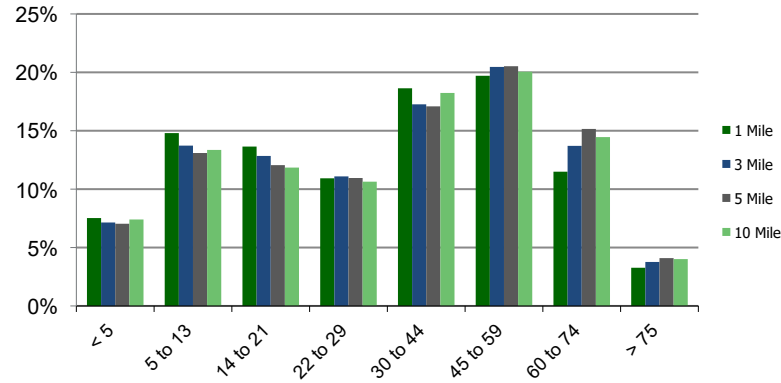
Daytime Population (3-Mile)



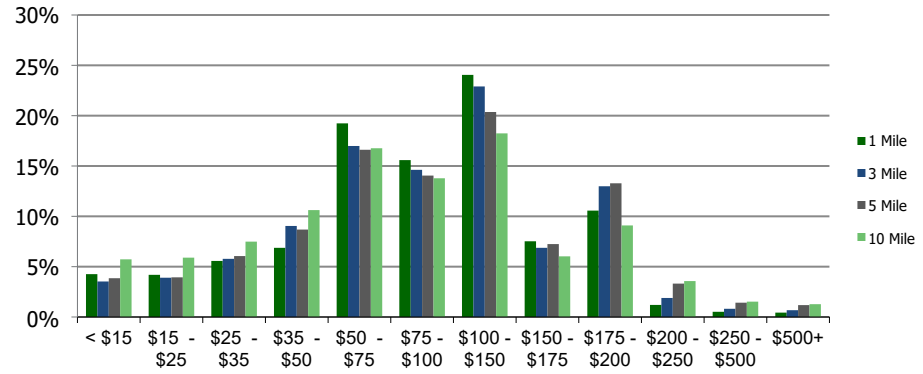
Ethnicity (3-Mile)

This report was produced using data from private and government sources deemed to be reliable and is herein provided without representation or warranty.

Population by Age Range



Household Income by Income Range (\$000)



	1.00 Mile Radius	3.00 Mile Radius	5.00 Mile Radius	10.00 Mile Radius
--	------------------	------------------	------------------	-------------------

117580-Grand Parkway Marketplace					
Spring, TX					
	1.00 Mile Radius	3.00 Mile Radius	5.00 Mile Radius	10.00 Mile Radius	
Population	Current Estimated Population	9,122	70,612	209,623	810,805
	2010 Census Population	5,869	46,835	145,499	631,858
	2000 Census Population	1,904	22,128	88,677	413,592
	Historical Annual Growth 2000 to 2010	11.92%	7.79%	5.08%	4.33%
	Estimated Annual Growth 2010 to 2019	4.63%	4.30%	3.82%	2.59%
	Projected Annual Growth 2019 to 2024	4.00%	3.97%	3.54%	2.24%
Households	Current Estimated Households	2,831	22,905	71,462	286,550
	2010 Census Households	1,824	15,165	49,818	223,994
	2000 Census Households	636	7,233	29,861	147,574
	Historical Annual Growth 2000 to 2010	11.1%	7.7%	5.3%	4.3%
	Estimated Annual Growth 2010 to 2019	4.6%	4.3%	3.8%	2.6%
	Projected Annual Growth 2019 to 2024	4.0%	4.0%	3.5%	2.2%
	Population per Household	3.2	3.1	2.9	2.8
Ethnicity	White	69.7%	73.9%	75.5%	69.2%
	Black or African American	10.7%	8.5%	8.5%	14.4%
	Asian & Pacific Islander	8.1%	6.8%	6.9%	6.1%
	Other Races	11.5%	10.8%	9.2%	10.3%
	Hispanic or Latino Population	24.9%	23.2%	20.9%	24.3%
	Non Hispanic or Latino Population	75.1%	76.8%	79.1%	75.7%

This report was produced using data from private and government sources deemed to be reliable and is herein provided without representation or warranty.