

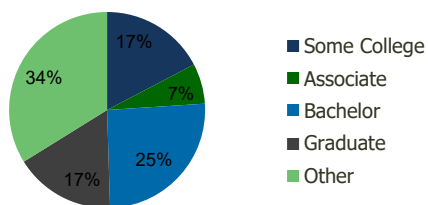
117120-Central Plaza Clark, NJ	1.00 Mile Radius	3.00 Mile Radius	5.00 Mile Radius	10.00 Mile Radius
-----------------------------------	---------------------	---------------------	---------------------	----------------------

Demographics (2019)

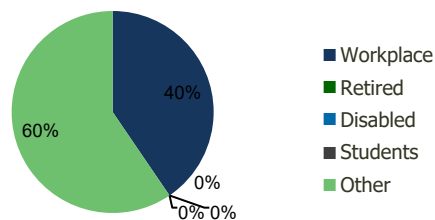
Current Population	13,107	151,003	383,547	1,534,250
Total Daytime Pop	14,876	158,018	405,978	1,694,111
Workplace Pop	7,347	63,965	189,161	787,650
Average Household Income	\$144,558	\$129,513	\$121,550	\$108,305
Median Household Income	\$117,421	\$94,945	\$90,020	\$76,449
Total Housing Units	4,883	56,704	137,558	536,535
Median Home Value	\$583,696	\$473,014	\$451,908	\$462,498
Bachelors Degree	28.4%	25.5%	23.6%	20.5%
Graduate Degree	21.7%	16.6%	15.9%	13.9%

Projections (2024)

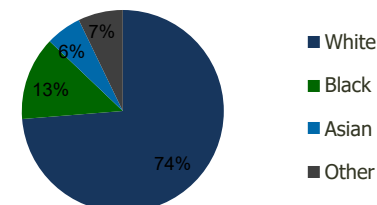
Projected Population	13,632	155,047	392,320	1,568,028
Projected 5 Year Pop Growth	0.8%	0.5%	0.5%	0.4%
Projected Households	5,078	58,262	140,779	548,701
Projected 5 Year Household Growth	0.8%	0.5%	0.5%	0.4%



Education (3-Mile)



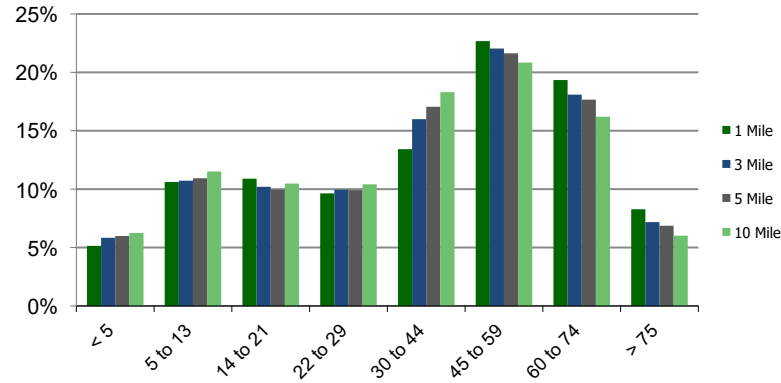
Daytime Population (3-Mile)



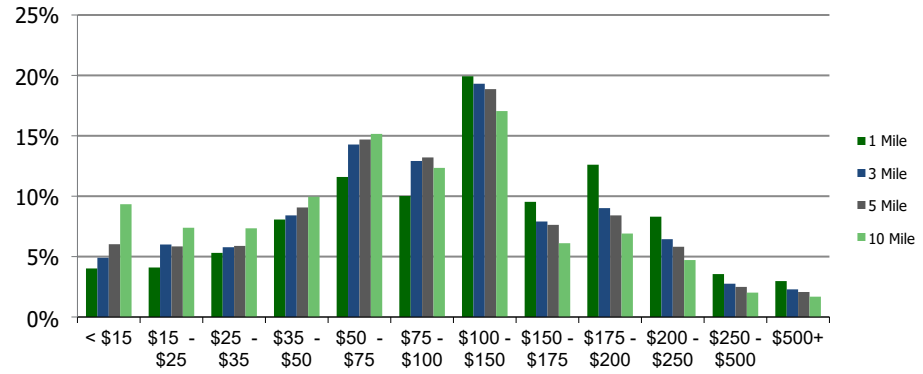
Ethnicity (3-Mile)

This report was produced using data from private and government sources deemed to be reliable and is herein provided without representation or warranty.

Population by Age Range



Household Income by Income Range (\$000)



117120-Central Plaza Clark, NJ

1.00 Mile
Radius

3.00 Mile
Radius

5.00 Mile
Radius

10.00 Mile
Radius

	1.00 Mile Radius	3.00 Mile Radius	5.00 Mile Radius	10.00 Mile Radius
Population	Current Estimated Population	13,107	151,003	383,547
	2010 Census Population	12,085	144,417	372,677
	2000 Census Population	12,050	142,473	364,188
	Historical Annual Growth 2000 to 2010	0.03%	0.14%	0.23%
	Estimated Annual Growth 2010 to 2019	0.84%	0.46%	0.30%
	Projected Annual Growth 2019 to 2024	0.79%	0.53%	0.45%
Households	Current Estimated Households	4,883	56,704	137,558
	2010 Census Households	4,507	54,136	133,372
	2000 Census Households	4,584	53,695	132,025
	Historical Annual Growth 2000 to 2010	-0.2%	0.1%	0.1%
	Estimated Annual Growth 2010 to 2019	0.8%	0.5%	0.3%
	Projected Annual Growth 2019 to 2024	0.8%	0.5%	0.5%
	Population per Household	2.7	2.6	2.8
Ethnicity	White	90.3%	73.7%	63.8%
	Black or African American	1.1%	13.4%	14.9%
	Asian & Pacific Islander	5.7%	5.7%	12.5%
	Other Races	2.8%	7.2%	8.8%
	Hispanic or Latino Population	8.8%	14.9%	18.4%
	Non Hispanic or Latino Population	91.2%	85.1%	81.6%

This report was produced using data from private and government sources deemed to be reliable and is herein provided without representation or warranty.