

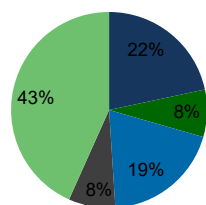
1718-Marathon S.C. Marathon, FL	1.00 Mile Radius	3.00 Mile Radius	5.00 Mile Radius	10.00 Mile Radius
------------------------------------	---------------------	---------------------	---------------------	----------------------

Demographics (2018)

Current Population	2,521	7,113	8,531	9,299
Total Daytime Pop	3,237	7,705	8,870	9,463
Workplace Pop	1,435	3,781	4,253	4,470
Average Household Income	\$105,395	\$85,201	\$93,342	\$93,930
Median Household Income	\$63,135	\$55,654	\$59,184	\$60,554
Total Housing Units	1,129	3,199	3,909	4,244
Median Home Value	\$620,617	\$621,219	\$680,785	\$687,781
Bachelors Degree	21.1%	19.5%	19.5%	19.4%
Graduate Degree	7.1%	7.7%	9.4%	9.7%

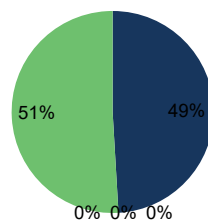
Projections (2023)

Projected Population	2,432	6,892	8,254	9,001
Projected 5 Year Pop Growth	-0.7%	-0.6%	-0.7%	-0.6%
Projected Households	1,089	3,098	3,780	4,106
Projected 5 Year Household Growth	-0.7%	-0.6%	-0.7%	-0.7%



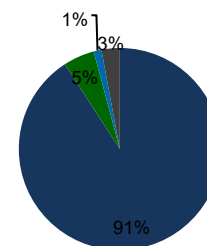
Education (3-Mile)

- Some College
- Associate
- Bachelor
- Graduate
- Other



Daytime Population (3-Mile)

- Workplace
- Retired
- Disabled
- Students
- Other

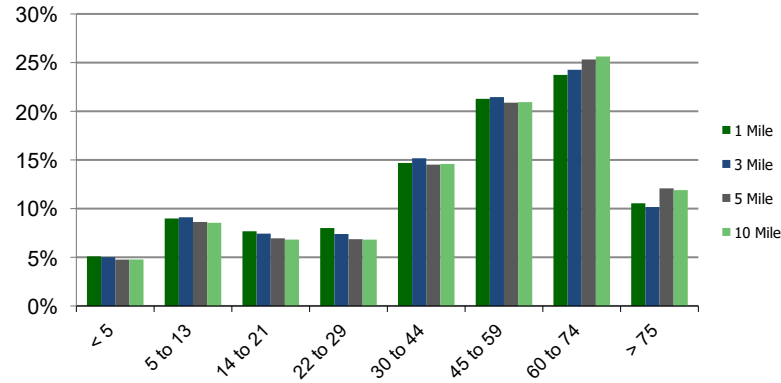


Ethnicity (3-Mile)

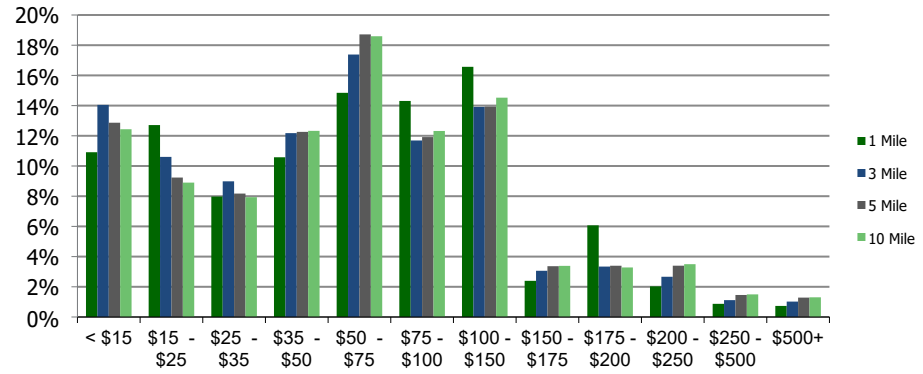
- White
- Black
- Asian
- Other

This report was produced using data from private and government sources deemed to be reliable and is herein provided without representation or warranty.

Population by Age Range



Household Income by Income Range (\$000)



1718-Marathon S.C.
Marathon, FL

1.00 Mile
Radius

3.00 Mile
Radius

5.00 Mile
Radius

10.00 Mile
Radius

	1.00 Mile Radius	3.00 Mile Radius	5.00 Mile Radius	10.00 Mile Radius
Population				
Current Estimated Population	2,521	7,113	8,531	9,299
2010 Census Population	2,509	6,990	8,439	9,208
2000 Census Population	2,900	8,454	9,906	10,850
Historical Annual Growth 2000 to 2010	-1.44%	-1.88%	-1.59%	-1.63%
Estimated Annual Growth 2010 to 2012	0.05%	0.20%	0.12%	0.11%
Projected Annual Growth 2012 to 2018	-0.72%	-0.63%	-0.66%	-0.65%
Households				
Current Estimated Households	1,129	3,199	3,909	4,244
2010 Census Households	1,121	3,134	3,859	4,194
2000 Census Households	1,265	3,732	4,483	4,907
Historical Annual Growth 2000 to 2010	-1.2%	-1.7%	-1.5%	-1.6%
Estimated Annual Growth 2010 to 2012	0.1%	0.2%	0.1%	0.1%
Projected Annual Growth 2012 to 2018	-0.7%	-0.6%	-0.7%	-0.7%
Population per Household	2.2	2.2	2.2	2.2
Ethnicity				
White	91.1%	90.9%	90.9%	90.8%
Black or African American	5.0%	5.0%	5.2%	5.3%
Asian & Pacific Islander	1.2%	1.3%	1.2%	1.1%
Other Races	2.7%	2.9%	2.7%	2.7%
Hispanic or Latino Population	32.9%	32.1%	28.7%	27.3%
Non Hispanic or Latino Population	67.1%	67.9%	71.3%	72.7%

This report was produced using data from private and government sources deemed to be reliable and is herein provided without representation or warranty.