

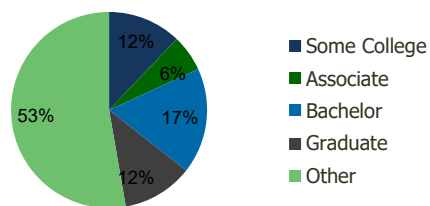
117150-Winn Dixie - Miami Miami, FL	1.00 Mile Radius	3.00 Mile Radius	5.00 Mile Radius	10.00 Mile Radius
--	---------------------	---------------------	---------------------	----------------------

Demographics (2019)

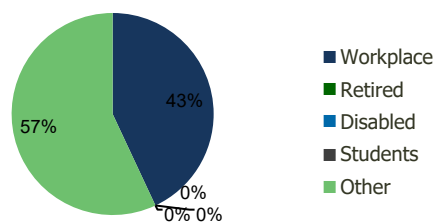
Current Population	45,080	330,984	571,650	1,384,588
Total Daytime Pop	63,158	469,399	758,377	1,729,778
Workplace Pop	34,628	201,999	344,596	830,219
Average Household Income	\$37,225	\$76,036	\$78,128	\$80,797
Median Household Income	\$24,411	\$45,112	\$45,151	\$48,013
Total Housing Units	17,177	137,081	234,700	519,526
Median Home Value	\$374,095	\$546,760	\$543,716	\$499,625
Bachelors Degree	8.3%	17.4%	17.5%	17.4%
Graduate Degree	3.3%	11.7%	11.9%	11.1%

Projections (2024)

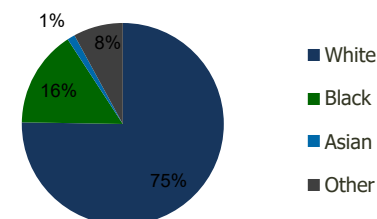
Projected Population	47,356	359,059	603,031	1,431,514
Projected 5 Year Pop Growth	1.0%	1.6%	1.1%	0.7%
Projected Households	18,137	151,743	250,461	540,835
Projected 5 Year Household Growth	1.1%	2.1%	1.3%	0.8%



Education (3-Mile)



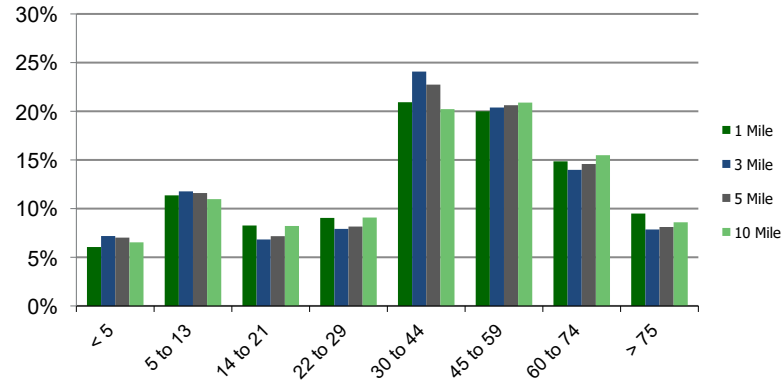
Daytime Population (3-Mile)



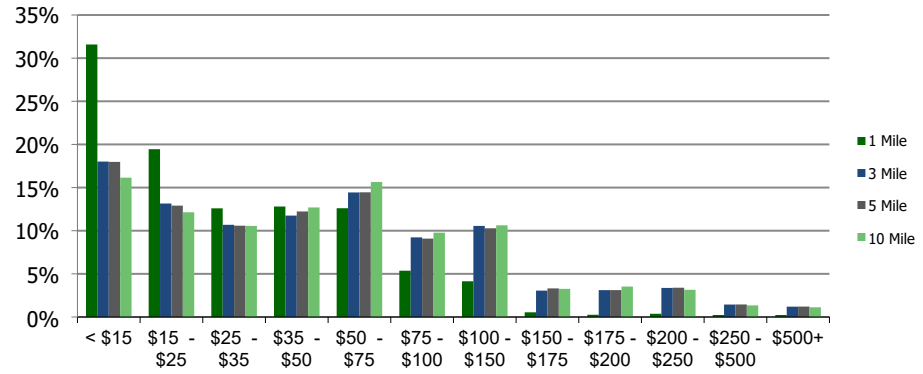
Ethnicity (3-Mile)

This report was produced using data from private and government sources deemed to be reliable and is herein provided without representation or warranty.

Population by Age Range



Household Income by Income Range (\$000)



	1.00 Mile Radius	3.00 Mile Radius	5.00 Mile Radius	10.00 Mile Radius
117150-Winn Dixie - Miami				
Miami, FL				

Population	Current Estimated Population	45,080	330,984	571,650	1,384,588
	2010 Census Population	40,165	280,829	509,586	1,279,725
	2000 Census Population	37,171	248,422	468,197	1,231,287
	Historical Annual Growth 2000 to 2010	0.78%	1.23%	0.85%	0.39%
	Estimated Annual Growth 2010 to 2019	1.19%	1.70%	1.19%	0.81%
	Projected Annual Growth 2019 to 2024	0.99%	1.64%	1.07%	0.67%
Households	Current Estimated Households	17,177	137,081	234,700	519,526
	2010 Census Households	15,070	111,554	204,816	474,343
	2000 Census Households	14,063	91,023	178,867	445,896
	Historical Annual Growth 2000 to 2010	0.7%	2.1%	1.4%	0.6%
	Estimated Annual Growth 2010 to 2019	1.4%	2.1%	1.4%	0.9%
	Projected Annual Growth 2019 to 2024	1.1%	2.1%	1.3%	0.8%
	Population per Household	2.5	2.4	2.4	2.6
Ethnicity	White	70.3%	75.3%	71.2%	73.6%
	Black or African American	20.6%	15.6%	20.6%	19.3%
	Asian & Pacific Islander	0.6%	1.2%	1.1%	1.3%
	Other Races	8.5%	8.0%	7.0%	5.8%
	Hispanic or Latino Population	77.6%	72.8%	65.7%	66.1%
	Non Hispanic or Latino Population	22.4%	27.2%	34.3%	33.9%

This report was produced using data from private and government sources deemed to be reliable and is herein provided without representation or warranty.