

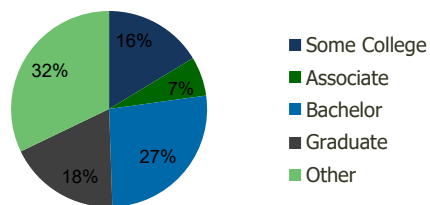
1710-1711-Commerce Center West Clark, NJ	1.00 Mile Radius	3.00 Mile Radius	5.00 Mile Radius	10.00 Mile Radius
---	---------------------	---------------------	---------------------	----------------------

Demographics (2019)

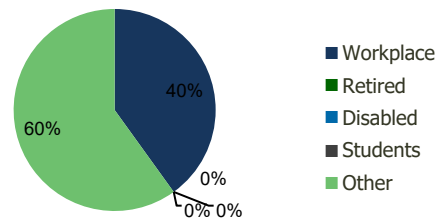
Current Population	13,140	141,614	373,727	1,475,574
Total Daytime Pop	15,060	145,752	402,069	1,629,222
Workplace Pop	6,843	58,382	191,257	759,258
Average Household Income	\$153,941	\$135,799	\$123,433	\$109,971
Median Household Income	\$118,940	\$100,668	\$91,962	\$77,770
Total Housing Units	4,871	52,869	134,307	515,094
Median Home Value	\$616,497	\$492,749	\$454,180	\$461,695
Bachelors Degree	28.9%	26.7%	24.2%	20.7%
Graduate Degree	23.3%	18.4%	16.5%	14.3%

Projections (2023)

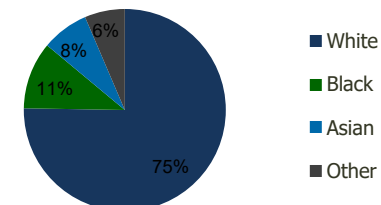
Projected Population	13,668	145,517	382,339	1,507,885
Projected 5 Year Pop Growth	0.8%	0.5%	0.5%	0.4%
Projected Households	5,065	54,359	137,483	526,657
Projected 5 Year Household Growth	0.8%	0.6%	0.5%	0.4%



Education (3-Mile)



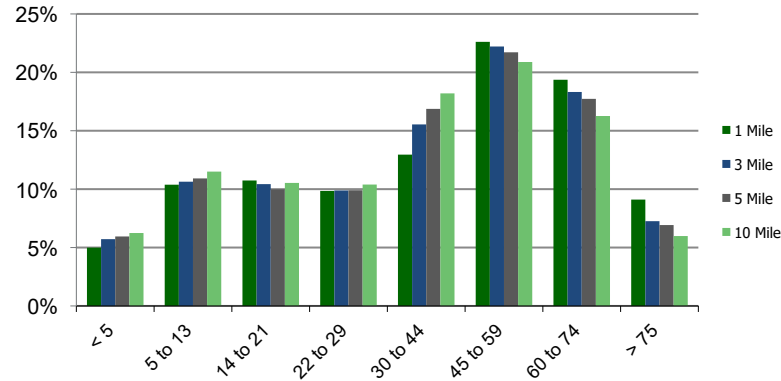
Daytime Population (3-Mile)



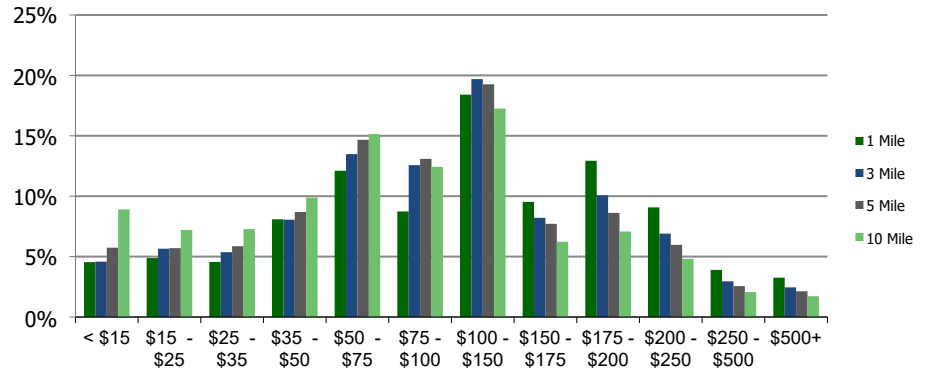
Ethnicity (3-Mile)

This report was produced using data from private and government sources deemed to be reliable and is herein provided without representation or warranty.

Population by Age Range



Household Income by Income Range (\$000)



1710-1711-Commerce Center West Clark, NJ	1.00 Mile Radius	3.00 Mile Radius	5.00 Mile Radius	10.00 Mile Radius
---	-----------------------------	-----------------------------	-----------------------------	------------------------------

Population	Current Estimated Population	13,140	141,614	373,727	1,475,574
	2010 Census Population	12,113	135,605	363,569	1,449,589
	2000 Census Population	11,818	133,723	355,367	1,407,933
	Historical Annual Growth 2000 to 2010	0.25%	0.14%	0.23%	0.29%
	Estimated Annual Growth 2010 to 2012	0.84%	0.45%	0.28%	0.18%
	Projected Annual Growth 2012 to 2019	0.79%	0.55%	0.46%	0.43%
Households	Current Estimated Households	4,871	52,869	134,307	515,094
	2010 Census Households	4,503	50,545	130,354	505,490
	2000 Census Households	4,473	50,107	128,992	495,447
	Historical Annual Growth 2000 to 2010	0.1%	0.1%	0.1%	0.2%
	Estimated Annual Growth 2010 to 2012	0.8%	0.5%	0.3%	0.2%
	Projected Annual Growth 2012 to 2019	0.8%	0.6%	0.5%	0.4%
	Population per Household	2.6	2.7	2.7	2.8
Ethnicity	White	88.9%	75.3%	62.6%	55.1%
	Black or African American	1.7%	10.8%	15.9%	23.7%
	Asian & Pacific Islander	6.7%	7.5%	13.2%	10.4%
	Other Races	2.7%	6.4%	8.2%	10.7%
	Hispanic or Latino Population	8.2%	13.3%	16.4%	21.9%
	Non Hispanic or Latino Population	91.8%	86.7%	83.6%	78.1%

This report was produced using data from private and government sources deemed to be reliable and is herein provided without representation or warranty.