

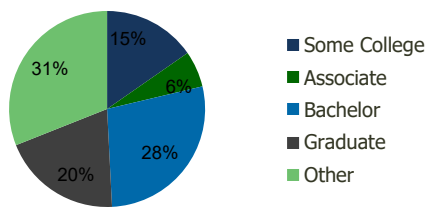
117100-Commerce Center West Clark, NJ	1.00 Mile Radius	3.00 Mile Radius	5.00 Mile Radius	10.00 Mile Radius
--	---------------------	---------------------	---------------------	----------------------

Demographics (2021)

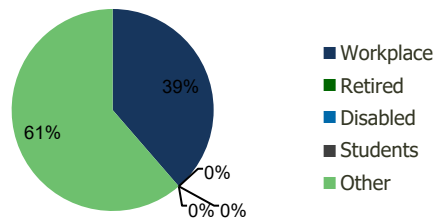
Current Population	13,495	148,198	387,930	1,531,595
Total Daytime Pop	14,702	149,062	411,754	1,639,301
Workplace Pop	6,516	57,584	188,239	722,667
Average Household Income	\$162,763	\$144,526	\$129,766	\$117,204
Median Household Income	\$128,821	\$107,651	\$97,757	\$83,010
Total Housing Units	5,007	55,405	139,615	535,102
Median Home Value	\$670,395	\$555,300	\$497,123	\$503,284
Bachelors Degree	28.5%	27.9%	25.1%	21.8%
Graduate Degree	25.2%	19.8%	17.7%	15.0%

Projections (2026)

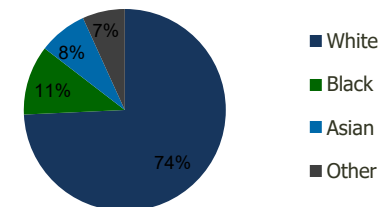
Projected Population	13,889	151,727	394,644	1,549,650
Projected 5 Year Pop Growth	0.6%	0.5%	0.3%	0.2%
Projected Households	5,148	56,781	142,162	541,638
Projected 5 Year Household Growth	0.6%	0.5%	0.4%	0.2%



Education (3-Mile)



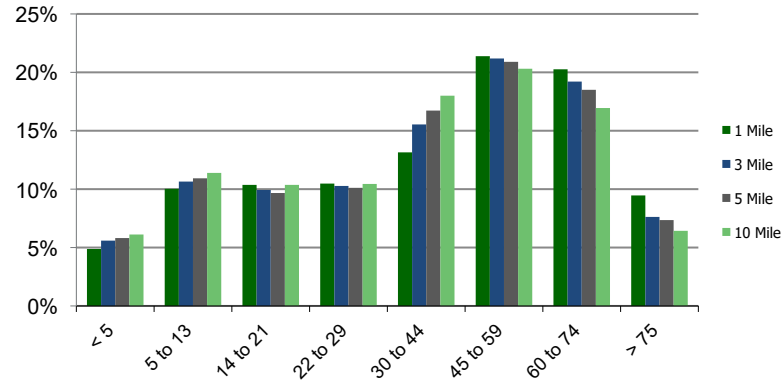
Daytime Population (3-Mile)



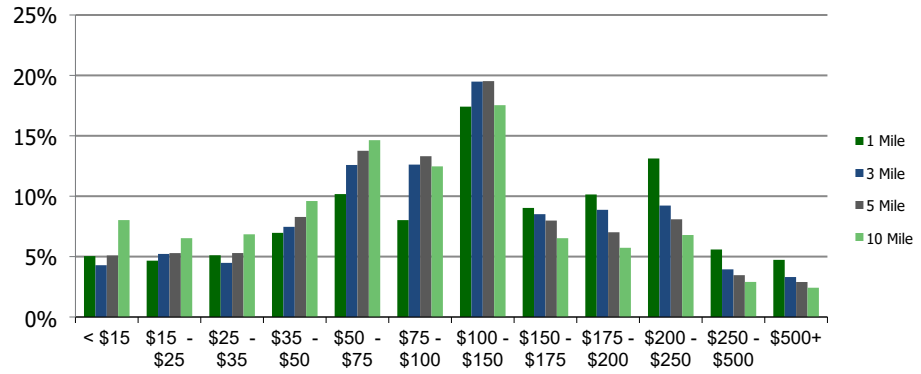
Ethnicity (3-Mile)

This report was produced using data from private and government sources deemed to be reliable and is herein provided without representation or warranty.

Population by Age Range



Household Income by Income Range (\$000)



117100-Commerce Center West Clark, NJ	1.00 Mile Radius	3.00 Mile Radius	5.00 Mile Radius	10.00 Mile Radius
---	-------------------------	-------------------------	-------------------------	--------------------------

Population	Current Estimated Population	13,495	148,198	387,930	1,531,595
	2010 Census Population	12,088	135,626	362,186	1,448,038
	2000 Census Population	11,791	133,748	353,989	1,406,367
	Historical Annual Growth 2000 to 2010	0.25%	0.14%	0.23%	0.29%
	Estimated Annual Growth 2010 to 2020	0.94%	0.76%	0.59%	0.48%
	Projected Annual Growth 2020 to 2025	0.58%	0.47%	0.34%	0.23%
Households	Current Estimated Households	5,007	55,405	139,615	535,102
	2010 Census Households	4,494	50,552	129,889	504,635
	2000 Census Households	4,463	50,115	128,526	494,723
	Historical Annual Growth 2000 to 2010	0.1%	0.1%	0.1%	0.2%
	Estimated Annual Growth 2010 to 2020	0.9%	0.8%	0.6%	0.5%
	Projected Annual Growth 2020 to 2025	0.6%	0.5%	0.4%	0.2%
	Population per Household	2.6	2.7	2.7	2.8
Ethnicity	White	88.4%	74.3%	61.5%	54.3%
	Black or African American	2.2%	11.1%	16.0%	23.9%
	Asian & Pacific Islander	6.8%	7.8%	13.6%	10.7%
	Other Races	2.6%	6.8%	9.0%	11.2%
	Hispanic or Latino Population	9.2%	14.2%	17.4%	22.5%
	Non Hispanic or Latino Population	90.8%	85.8%	82.6%	77.5%

This report was produced using data from private and government sources deemed to be reliable and is herein provided without representation or warranty.