

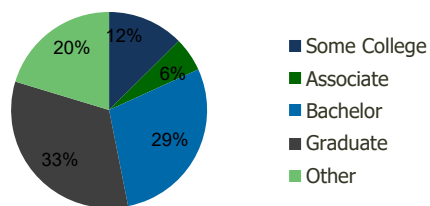
117620-Kentlands Market Square Gaithersburg, MD	1.00 Mile Radius	3.00 Mile Radius	5.00 Mile Radius	10.00 Mile Radius
--	---------------------	---------------------	---------------------	----------------------

Demographics (2020)

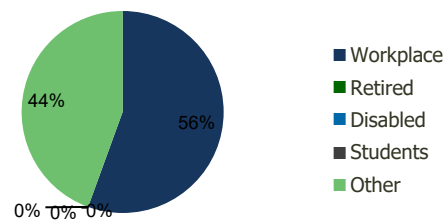
Current Population	16,381	109,349	283,033	658,168
Total Daytime Pop	21,016	127,415	311,226	712,727
Workplace Pop	12,312	70,782	153,032	335,671
Average Household Income	\$173,145	\$136,957	\$135,349	\$149,925
Median Household Income	\$139,532	\$105,271	\$104,043	\$113,135
Total Housing Units	6,428	40,494	101,027	237,163
Median Home Value	\$606,356	\$554,985	\$486,886	\$543,368
Bachelors Degree	31.6%	28.7%	27.4%	28.2%
Graduate Degree	42.4%	32.8%	29.4%	31.0%

Projections (2025)

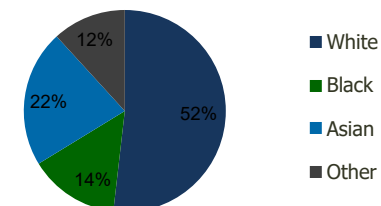
Projected Population	16,870	115,187	295,209	688,091
Projected 5 Year Pop Growth	0.6%	1.0%	0.8%	0.9%
Projected Households	6,621	42,767	105,582	248,211
Projected 5 Year Household Growth	0.6%	1.1%	0.9%	0.9%



Education (3-Mile)



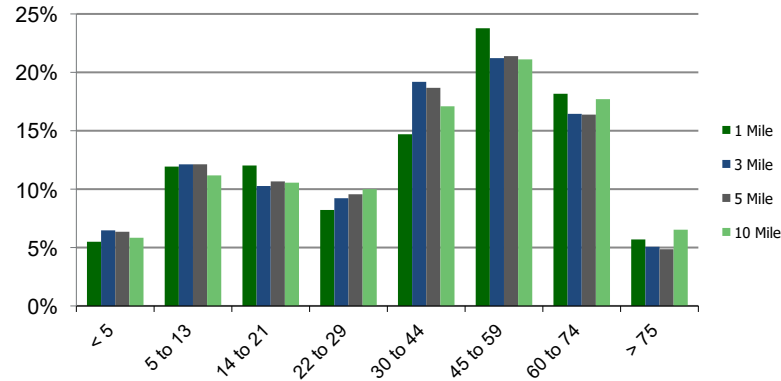
Daytime Population (3-Mile)



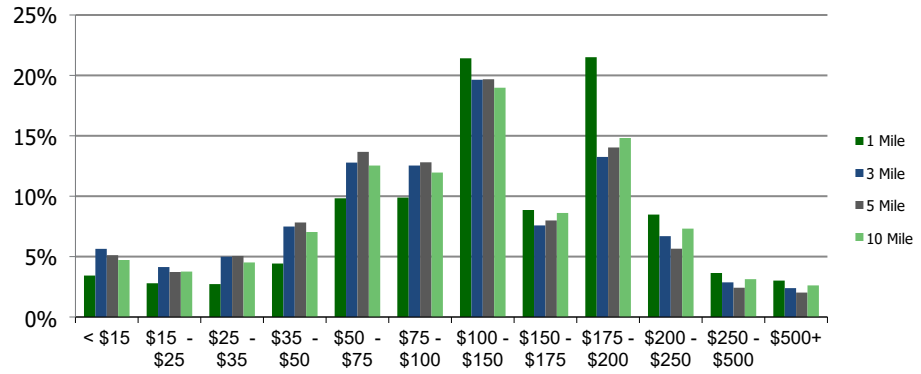
Ethnicity (3-Mile)

This report was produced using data from private and government sources deemed to be reliable and is herein provided without representation or warranty.

Population by Age Range



Household Income by Income Range (\$000)



117620-Kentlands Market Square Gaithersburg, MD	1.00 Mile Radius	3.00 Mile Radius	5.00 Mile Radius	10.00 Mile Radius
---	-------------------------	-------------------------	-------------------------	--------------------------

Population	Current Estimated Population	16,381	109,349	283,033	658,168
	2010 Census Population	16,326	100,011	264,014	611,632
	2000 Census Population	11,636	88,342	224,029	536,264
	Historical Annual Growth 2000 to 2010	3.44%	1.25%	1.66%	1.32%
	Estimated Annual Growth 2010 to 2020	0.03%	0.83%	0.65%	0.68%
	Projected Annual Growth 2020 to 2025	0.59%	1.05%	0.85%	0.89%
Households	Current Estimated Households	6,428	40,494	101,027	237,163
	2010 Census Households	6,419	36,817	93,875	219,588
	2000 Census Households	4,445	32,002	79,897	193,956
	Historical Annual Growth 2000 to 2010	3.7%	1.4%	1.6%	1.2%
	Estimated Annual Growth 2010 to 2020	0.0%	0.9%	0.7%	0.7%
	Projected Annual Growth 2020 to 2025	0.6%	1.1%	0.9%	0.9%
	Population per Household	2.5	2.7	2.8	2.8
Ethnicity	White	68.3%	51.8%	51.4%	57.1%
	Black or African American	6.1%	14.4%	17.1%	13.9%
	Asian & Pacific Islander	19.4%	21.9%	19.7%	17.5%
	Other Races	6.2%	11.8%	11.8%	11.4%
	Hispanic or Latino Population	7.5%	18.3%	19.9%	17.9%
	Non Hispanic or Latino Population	92.5%	81.7%	80.1%	82.1%

This report was produced using data from private and government sources deemed to be reliable and is herein provided without representation or warranty.