

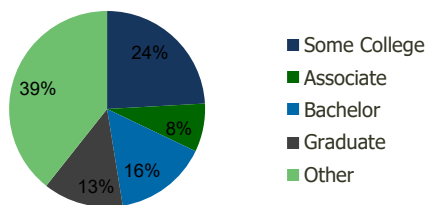
100220-Tradewinds S.C. Key Largo, FL	1.00 Mile Radius	3.00 Mile Radius	5.00 Mile Radius	10.00 Mile Radius
---	---------------------	---------------------	---------------------	----------------------

Demographics (2021)

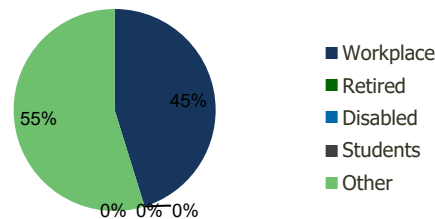
Current Population	2,440	7,887	10,335	14,330
Total Daytime Pop	1,864	7,183	9,601	12,726
Workplace Pop	722	3,247	4,112	5,492
Average Household Income	\$71,885	\$101,222	\$104,183	\$109,730
Median Household Income	\$51,770	\$72,542	\$75,128	\$77,378
Total Housing Units	1,050	3,513	4,632	6,493
Median Home Value	\$532,080	\$834,234	\$811,094	\$797,051
Bachelors Degree	17.7%	15.4%	15.5%	17.6%
Graduate Degree	7.3%	13.2%	14.3%	14.7%

Projections (2026)

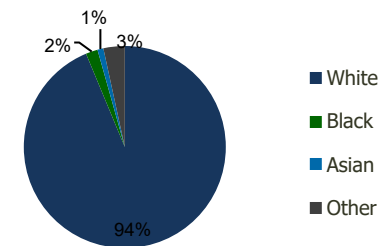
Projected Population	2,425	7,928	10,382	14,331
Projected 5 Year Pop Growth	-0.1%	0.1%	0.1%	0.0%
Projected Households	1,042	3,530	4,652	6,492
Projected 5 Year Household Growth	-0.1%	0.1%	0.1%	0.0%



Education (3-Mile)



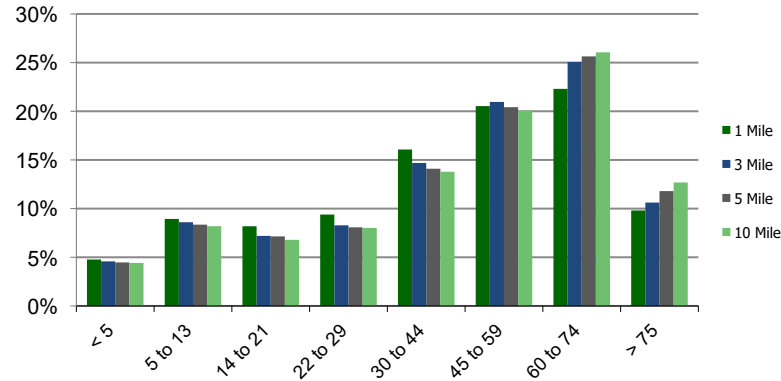
Daytime Population (3-Mile)



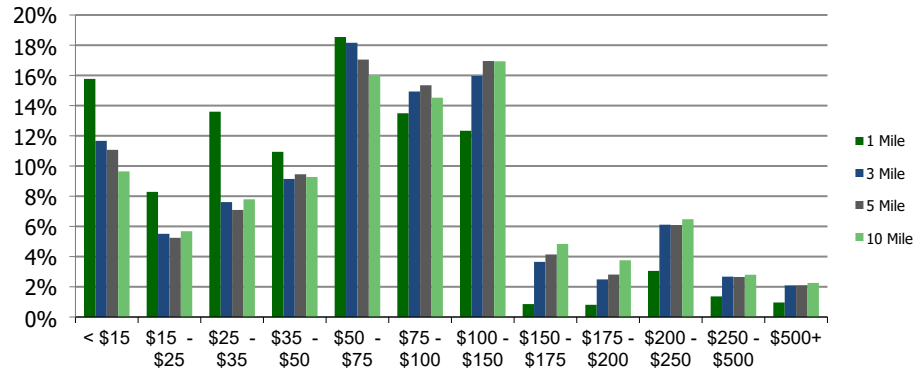
Ethnicity (3-Mile)

This report was produced using data from private and government sources deemed to be reliable and is herein provided without representation or warranty.

Population by Age Range



Household Income by Income Range (\$000)



100220-Tradewinds S.C.
Key Largo, FL

1.00 Mile
Radius

3.00 Mile
Radius

5.00 Mile
Radius

10.00 Mile
Radius

	1.00 Mile Radius	3.00 Mile Radius	5.00 Mile Radius	10.00 Mile Radius
Population	Current Estimated Population	2,440	7,887	10,335
	2010 Census Population	2,249	6,977	9,133
	2000 Census Population	2,334	7,570	10,153
	Historical Annual Growth 2000 to 2010	-0.37%	-0.81%	-1.05%
	Estimated Annual Growth 2010 to 2020	0.69%	1.05%	1.06%
	Projected Annual Growth 2020 to 2025	-0.13%	0.10%	0.09%
Households	Current Estimated Households	1,050	3,513	4,632
	2010 Census Households	967	3,103	4,085
	2000 Census Households	1,028	3,245	4,397
	Historical Annual Growth 2000 to 2010	-0.6%	-0.4%	-0.7%
	Estimated Annual Growth 2010 to 2020	0.7%	1.1%	1.1%
	Projected Annual Growth 2020 to 2025	-0.1%	0.1%	0.1%
	Population per Household	2.3	2.2	2.2
Ethnicity	White	92.7%	93.7%	94.0%
	Black or African American	3.1%	1.9%	1.9%
	Asian & Pacific Islander	1.3%	1.0%	1.0%
	Other Races	2.9%	3.4%	3.1%
	Hispanic or Latino Population	35.9%	26.1%	24.8%
	Non Hispanic or Latino Population	64.1%	73.9%	75.2%

This report was produced using data from private and government sources deemed to be reliable and is herein provided without representation or warranty.