

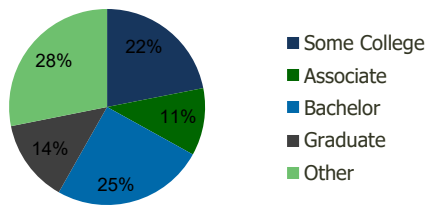
116500-Riverplace S.C. Jacksonville, FL	1.00 Mile Radius	3.00 Mile Radius	5.00 Mile Radius	10.00 Mile Radius
--	---------------------	---------------------	---------------------	----------------------

Demographics (2021)

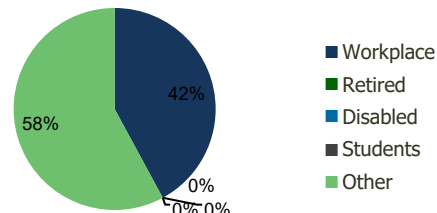
Current Population	10,719	64,154	130,361	515,546
Total Daytime Pop	8,549	51,114	159,810	619,534
Workplace Pop	4,357	21,516	89,336	321,455
Average Household Income	\$80,396	\$94,466	\$97,864	\$92,748
Median Household Income	\$60,098	\$71,100	\$72,241	\$67,927
Total Housing Units	4,670	26,396	52,196	207,536
Median Home Value	\$357,204	\$410,879	\$425,745	\$384,992
Bachelors Degree	24.8%	25.2%	26.3%	24.6%
Graduate Degree	10.4%	13.7%	14.0%	13.1%

Projections (2026)

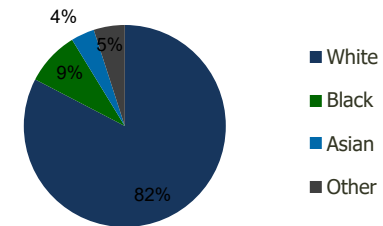
Projected Population	10,515	64,855	136,257	548,037
Projected 5 Year Pop Growth	-0.4%	0.2%	0.9%	1.2%
Projected Households	4,581	26,652	54,379	220,365
Projected 5 Year Household Growth	-0.4%	0.2%	0.8%	1.2%



Education (3-Mile)



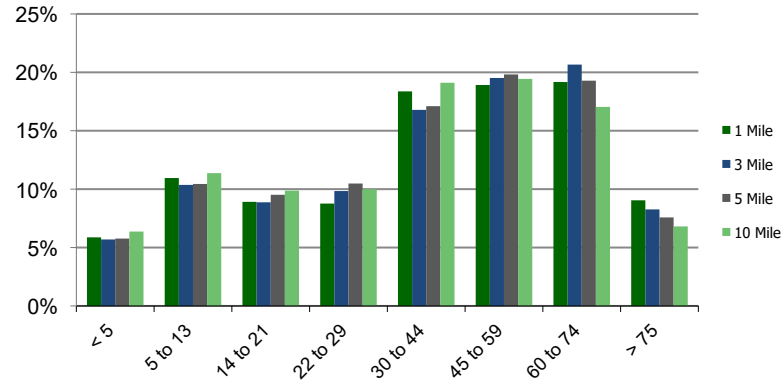
Daytime Population (3-Mile)



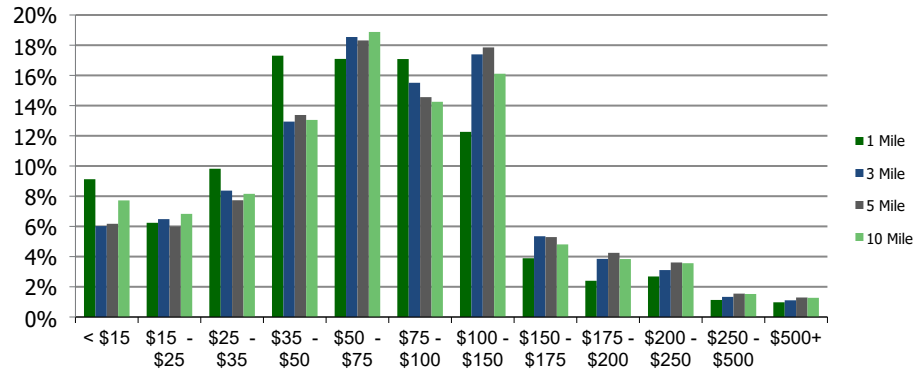
Ethnicity (3-Mile)

This report was produced using data from private and government sources deemed to be reliable and is herein provided without representation or warranty.

Population by Age Range



Household Income by Income Range (\$000)



11650-Riverplace S.C.
Jacksonville, FL

1.00 Mile
Radius

3.00 Mile
Radius

5.00 Mile
Radius

10.00 Mile
Radius

	1.00 Mile Radius	3.00 Mile Radius	5.00 Mile Radius	10.00 Mile Radius
Population	Current Estimated Population	10,719	64,154	130,361
	2010 Census Population	10,371	58,238	110,881
	2000 Census Population	11,224	57,185	104,037
	Historical Annual Growth 2000 to 2010	-0.79%	0.18%	0.64%
	Estimated Annual Growth 2010 to 2020	0.28%	0.83%	1.39%
	Projected Annual Growth 2020 to 2025	-0.38%	0.22%	0.89%
Households	Current Estimated Households	4,670	26,396	52,196
	2010 Census Households	4,516	24,010	44,637
	2000 Census Households	4,719	22,560	41,054
	Historical Annual Growth 2000 to 2010	-0.4%	0.6%	0.8%
	Estimated Annual Growth 2010 to 2020	0.3%	0.8%	1.3%
	Projected Annual Growth 2020 to 2025	-0.4%	0.2%	0.8%
	Population per Household	2.3	2.4	2.5
Ethnicity	White	87.0%	82.6%	80.5%
	Black or African American	5.4%	8.6%	9.5%
	Asian & Pacific Islander	2.7%	3.8%	4.5%
	Other Races	4.9%	5.0%	5.4%
	Hispanic or Latino Population	9.8%	8.3%	8.9%
	Non Hispanic or Latino Population	90.2%	91.7%	91.1%

This report was produced using data from private and government sources deemed to be reliable and is herein provided without representation or warranty.