

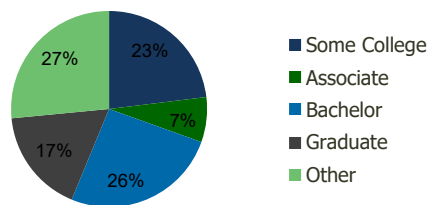
115230-Milwaukie Marketplace Milwaukie, OR	1.00 Mile Radius	3.00 Mile Radius	5.00 Mile Radius	10.00 Mile Radius
---	---------------------	---------------------	---------------------	----------------------

Demographics (2020)

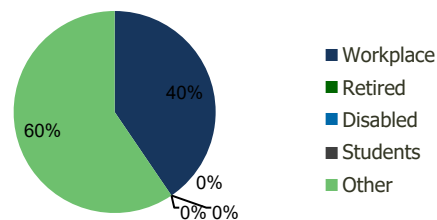
Current Population	13,735	120,501	343,762	1,141,679
Total Daytime Pop	18,672	113,101	344,917	1,391,159
Workplace Pop	10,683	45,793	151,369	664,747
Average Household Income	\$75,687	\$96,015	\$104,466	\$101,486
Median Household Income	\$59,974	\$71,901	\$78,209	\$75,292
Total Housing Units	5,977	50,090	145,256	477,119
Median Home Value	\$482,483	\$508,372	\$561,937	\$553,232
Bachelors Degree	22.5%	25.8%	29.4%	28.4%
Graduate Degree	14.5%	17.2%	20.2%	18.2%

Projections (2025)

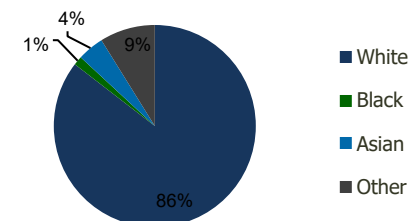
Projected Population	14,228	125,850	361,836	1,207,048
Projected 5 Year Pop Growth	0.7%	0.9%	1.0%	1.1%
Projected Households	6,187	52,450	153,358	506,331
Projected 5 Year Household Growth	0.7%	0.9%	1.1%	1.2%



Education (3-Mile)



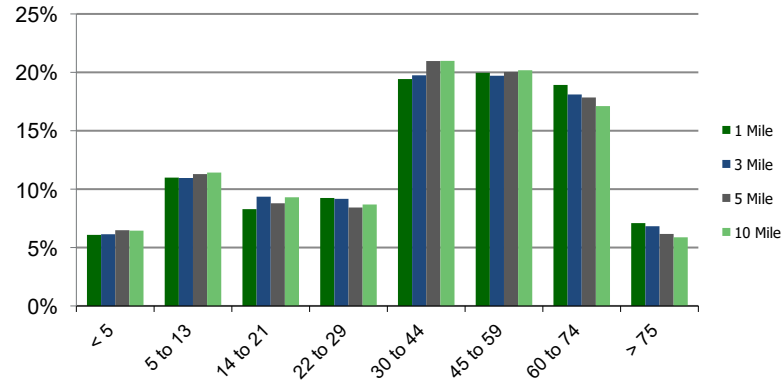
Daytime Population (3-Mile)



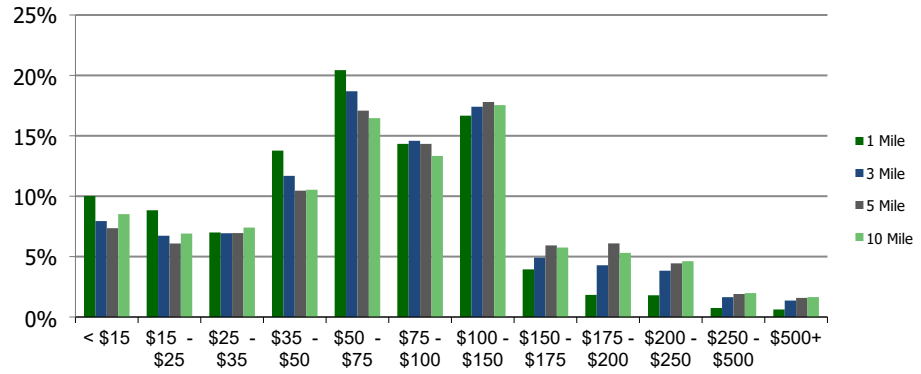
Ethnicity (3-Mile)

This report was produced using data from private and government sources deemed to be reliable and is herein provided without representation or warranty.

Population by Age Range



Household Income by Income Range (\$000)



115230-Milwaukie Marketplace		1.00 Mile Radius	3.00 Mile Radius	5.00 Mile Radius	10.00 Mile Radius
Milwaukie, OR					

Population	Current Estimated Population	13,735	120,501	343,762	1,141,679
	2010 Census Population	13,318	112,775	315,129	1,034,508
	2000 Census Population	13,328	107,522	296,170	934,711
	Historical Annual Growth 2000 to 2010	-0.01%	0.48%	0.62%	1.02%
	Estimated Annual Growth 2010 to 2020	0.29%	0.62%	0.81%	0.92%
	Projected Annual Growth 2020 to 2025	0.71%	0.87%	1.03%	1.12%
Households	Current Estimated Households	5,977	50,090	145,256	477,119
	2010 Census Households	5,817	46,592	132,094	428,643
	2000 Census Households	5,701	44,549	122,933	384,577
	Historical Annual Growth 2000 to 2010	0.2%	0.4%	0.7%	1.1%
	Estimated Annual Growth 2010 to 2020	0.3%	0.7%	0.9%	1.0%
	Projected Annual Growth 2020 to 2025	0.7%	0.9%	1.1%	1.2%
	Population per Household	2.3	2.4	2.3	2.3
Ethnicity	White	89.1%	85.5%	83.0%	80.0%
	Black or African American	1.1%	1.4%	2.1%	3.9%
	Asian & Pacific Islander	2.9%	4.2%	6.4%	6.8%
	Other Races	6.8%	8.9%	8.5%	9.3%
	Hispanic or Latino Population	7.8%	9.9%	8.4%	10.3%
	Non Hispanic or Latino Population	92.2%	90.1%	91.6%	89.7%

This report was produced using data from private and government sources deemed to be reliable and is herein provided without representation or warranty.