

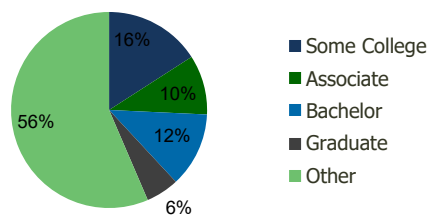
102030-Homestead Towne Square Homestead, FL	1.00 Mile Radius	3.00 Mile Radius	5.00 Mile Radius	10.00 Mile Radius
--	---------------------	---------------------	---------------------	----------------------

## Demographics (2020)

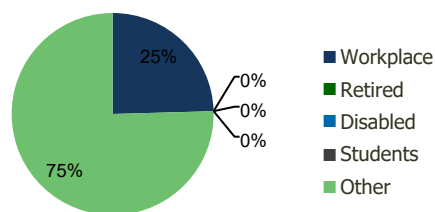
Current Population	22,072	111,325	159,134	314,109
Total Daytime Pop	18,079	93,943	131,960	245,620
Workplace Pop	6,199	23,068	30,413	59,394
Average Household Income	\$52,677	\$62,442	\$62,833	\$68,239
Median Household Income	\$40,176	\$48,002	\$48,235	\$53,850
Total Housing Units	6,963	34,060	47,794	93,469
Median Home Value	\$324,574	\$360,144	\$363,456	\$406,381
Bachelors Degree	11.3%	12.3%	12.6%	14.9%
Graduate Degree	3.3%	5.5%	5.5%	5.8%

## Projections (2025)

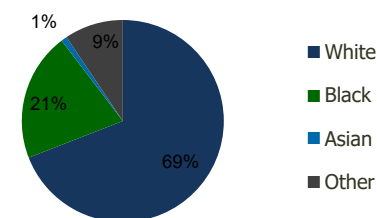
Projected Population	23,400	119,305	175,391	345,401
Projected 5 Year Pop Growth	1.2%	1.4%	2.0%	1.9%
Projected Households	7,385	36,527	52,674	102,711
Projected 5 Year Household Growth	1.2%	1.4%	2.0%	1.9%



Education (3-Mile)



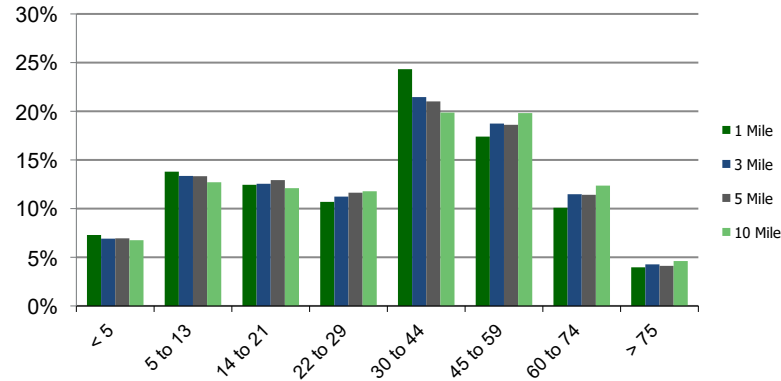
Daytime Population (3-Mile)



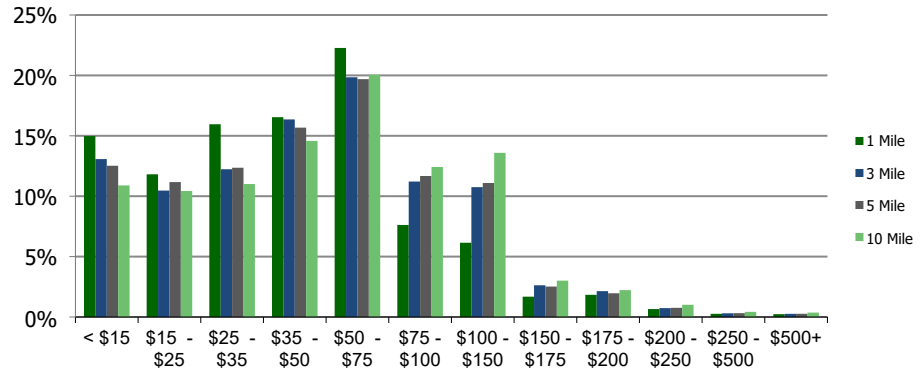
Ethnicity (3-Mile)

This report was produced using data from private and government sources deemed to be reliable and is herein provided without representation or warranty.

**Population by Age Range**



**Household Income by Income Range (\$000)**



	1.00 Mile Radius	3.00 Mile Radius	5.00 Mile Radius	10.00 Mile Radius
<b>102030-Homestead Towne Square</b>				
Homestead, FL				

<b>Population</b>	Current Estimated Population	22,072	111,325	159,134	314,109
	2010 Census Population	19,238	95,959	129,926	259,404
	2000 Census Population	15,238	67,285	88,468	187,111
	Historical Annual Growth 2000 to 2010	2.36%	3.61%	3.92%	3.32%
	Estimated Annual Growth 2010 to 2020	1.29%	1.39%	1.90%	1.80%
	Projected Annual Growth 2020 to 2025	1.18%	1.39%	1.96%	1.92%
<b>Households</b>	Current Estimated Households	6,963	34,060	47,794	93,469
	2010 Census Households	6,065	29,204	38,910	77,092
	2000 Census Households	4,810	20,645	26,350	55,520
	Historical Annual Growth 2000 to 2010	2.3%	3.5%	4.0%	3.3%
	Estimated Annual Growth 2010 to 2020	1.3%	1.4%	1.9%	1.8%
	Projected Annual Growth 2020 to 2025	1.2%	1.4%	2.0%	1.9%
	Population per Household	3.2	3.3	3.3	3.3
<b>Ethnicity</b>	White	70.2%	69.1%	67.5%	69.7%
	Black or African American	17.4%	20.6%	22.7%	21.2%
	Asian & Pacific Islander	0.4%	0.9%	1.2%	1.4%
	Other Races	12.0%	9.4%	8.6%	7.7%
	Hispanic or Latino Population	73.2%	65.3%	63.5%	65.6%
	Non Hispanic or Latino Population	26.8%	34.7%	36.5%	34.4%

This report was produced using data from private and government sources deemed to be reliable and is herein provided without representation or warranty.