

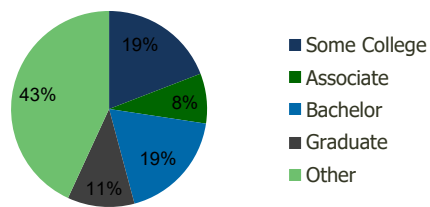
| 111540-Cypress Creek Station Fort Lauderdale, FL | 1.00 Mile Radius | 3.00 Mile Radius | 5.00 Mile Radius | 10.00 Mile Radius |
|---|---------------------|---------------------|---------------------|----------------------|
|---|---------------------|---------------------|---------------------|----------------------|

Demographics (2021)

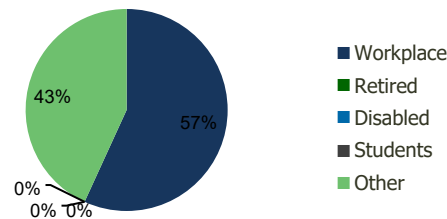
| | | | | |
|--------------------------|-----------|-----------|-----------|-----------|
| Current Population | 11,437 | 124,530 | 366,443 | 1,154,085 |
| Total Daytime Pop | 33,392 | 189,971 | 432,331 | 1,232,971 |
| Workplace Pop | 22,927 | 107,970 | 205,723 | 523,581 |
| Average Household Income | \$63,032 | \$79,496 | \$79,627 | \$85,135 |
| Median Household Income | \$52,989 | \$56,507 | \$54,572 | \$59,511 |
| Total Housing Units | 4,724 | 54,959 | 156,329 | 477,858 |
| Median Home Value | \$341,600 | \$474,482 | \$426,903 | \$457,231 |
| Bachelors Degree | 15.9% | 18.4% | 17.2% | 19.9% |
| Graduate Degree | 7.2% | 11.1% | 10.5% | 11.3% |

Projections (2026)

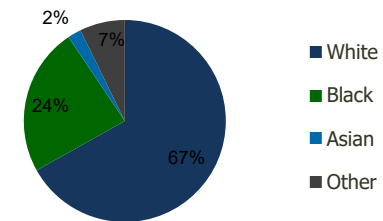
| | | | | |
|-----------------------------------|--------|---------|---------|-----------|
| Projected Population | 11,611 | 125,992 | 370,003 | 1,170,142 |
| Projected 5 Year Pop Growth | 0.3% | 0.2% | 0.2% | 0.3% |
| Projected Households | 4,809 | 55,588 | 157,578 | 484,923 |
| Projected 5 Year Household Growth | 0.4% | 0.2% | 0.2% | 0.3% |



Education (3-Mile)



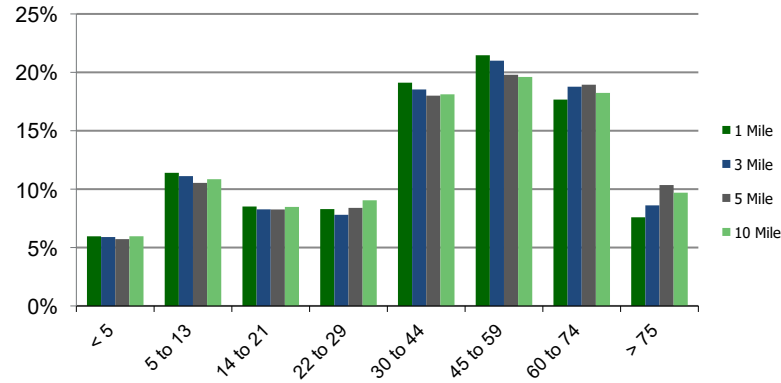
Daytime Population (3-Mile)



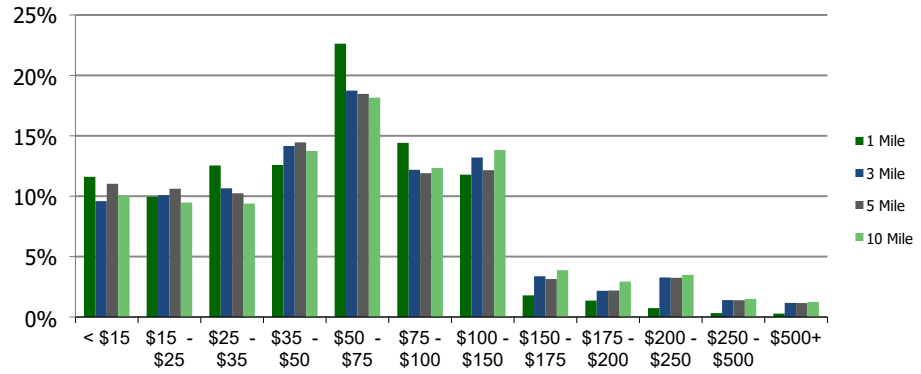
Ethnicity (3-Mile)

This report was produced using data from private and government sources deemed to be reliable and is herein provided without representation or warranty.

Population by Age Range



Household Income by Income Range (\$000)



111540-Cypress Creek Station
Fort Lauderdale, FL

1.00 Mile Radius

3.00 Mile Radius

5.00 Mile Radius

10.00 Mile Radius

| | 1.00 Mile Radius | 3.00 Mile Radius | 5.00 Mile Radius | 10.00 Mile Radius |
|-------------------|---------------------------------------|------------------|------------------|-------------------|
| Population | Current Estimated Population | 11,437 | 124,530 | 366,443 |
| | 2010 Census Population | 10,195 | 112,664 | 337,019 |
| | 2000 Census Population | 10,478 | 116,163 | 341,414 |
| | Historical Annual Growth 2000 to 2010 | -0.27% | -0.31% | -0.13% |
| | Estimated Annual Growth 2010 to 2020 | 0.98% | 0.86% | 0.71% |
| | Projected Annual Growth 2020 to 2025 | 0.30% | 0.23% | 0.19% |
| Households | Current Estimated Households | 4,724 | 54,959 | 156,329 |
| | 2010 Census Households | 4,146 | 49,645 | 144,307 |
| | 2000 Census Households | 4,417 | 50,949 | 146,964 |
| | Historical Annual Growth 2000 to 2010 | -0.6% | -0.3% | -0.2% |
| | Estimated Annual Growth 2010 to 2020 | 1.1% | 0.9% | 0.7% |
| | Projected Annual Growth 2020 to 2025 | 0.4% | 0.2% | 0.2% |
| | Population per Household | 2.4 | 2.2 | 2.3 |
| Ethnicity | White | 73.5% | 66.9% | 56.1% |
| | Black or African American | 11.6% | 23.7% | 36.0% |
| | Asian & Pacific Islander | 2.6% | 2.2% | 2.0% |
| | Other Races | 12.3% | 7.2% | 6.0% |
| | Hispanic or Latino Population | 38.4% | 23.4% | 18.3% |
| | Non Hispanic or Latino Population | 61.6% | 76.6% | 81.7% |

This report was produced using data from private and government sources deemed to be reliable and is herein provided without representation or warranty.