

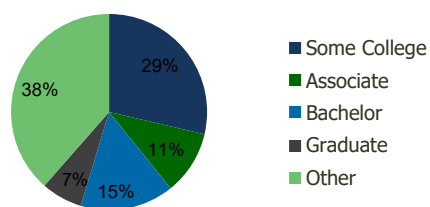
115250-Oregon Trail Center Gresham, OR	1.00 Mile Radius	3.00 Mile Radius	5.00 Mile Radius	10.00 Mile Radius
---	---------------------	---------------------	---------------------	----------------------

Demographics (2019)

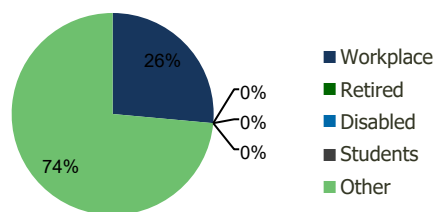
Current Population	22,153	103,089	183,200	601,437
Total Daytime Pop	29,731	93,168	163,230	543,680
Workplace Pop	7,765	24,641	46,353	201,578
Average Household Income	\$61,036	\$73,859	\$70,115	\$80,906
Median Household Income	\$50,729	\$60,345	\$56,064	\$63,116
Total Housing Units	8,427	38,080	66,347	226,110
Median Home Value	\$318,997	\$372,983	\$368,832	\$436,431
Bachelors Degree	12.9%	15.5%	14.2%	19.2%
Graduate Degree	7.4%	6.8%	6.3%	10.1%

Projections (2024)

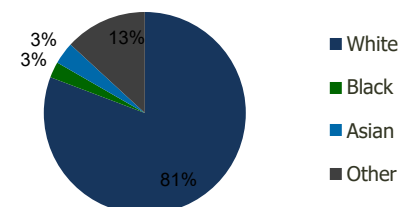
Projected Population	22,814	105,556	187,833	625,514
Projected 5 Year Pop Growth	0.6%	0.5%	0.5%	0.8%
Projected Households	8,675	39,002	68,035	235,066
Projected 5 Year Household Growth	0.6%	0.5%	0.5%	0.8%



Education (3-Mile)



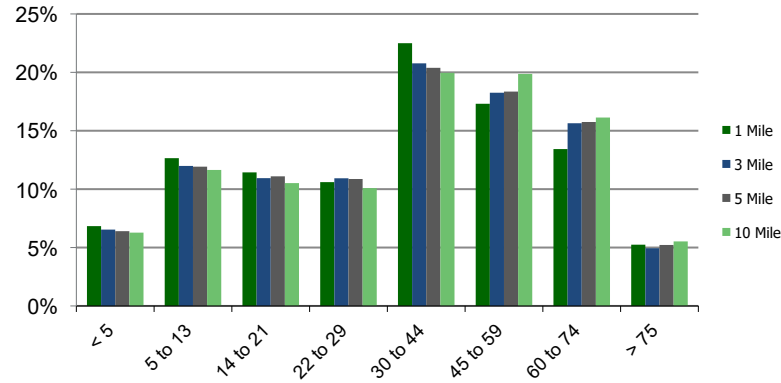
Daytime Population (3-Mile)



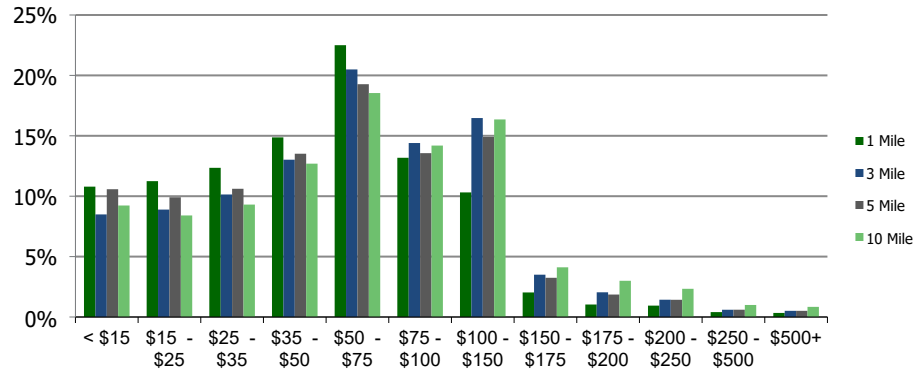
Ethnicity (3-Mile)

This report was produced using data from private and government sources deemed to be reliable and is herein provided without representation or warranty.

Population by Age Range



Household Income by Income Range (\$000)



115250-Oregon Trail Center Gresham, OR		1.00 Mile Radius	3.00 Mile Radius	5.00 Mile Radius	10.00 Mile Radius
--	--	------------------	------------------	------------------	-------------------

Population	Current Estimated Population	22,153	103,089	183,200	601,437
	2010 Census Population	20,516	96,535	171,446	550,560
	2000 Census Population	18,609	82,485	147,005	471,210
	Historical Annual Growth 2000 to 2010	0.98%	1.59%	1.55%	1.57%
	Estimated Annual Growth 2010 to 2019	0.79%	0.68%	0.68%	0.91%
	Projected Annual Growth 2019 to 2024	0.59%	0.47%	0.50%	0.79%
Households	Current Estimated Households	8,427	38,080	66,347	226,110
	2010 Census Households	7,805	35,634	62,048	207,020
	2000 Census Households	7,183	30,115	53,658	177,964
	Historical Annual Growth 2000 to 2010	0.8%	1.7%	1.5%	1.5%
	Estimated Annual Growth 2010 to 2019	0.8%	0.7%	0.7%	0.9%
	Projected Annual Growth 2019 to 2024	0.6%	0.5%	0.5%	0.8%
	Population per Household	2.6	2.7	2.7	2.6
Ethnicity	White	78.2%	80.8%	76.7%	76.4%
	Black or African American	2.6%	2.6%	4.0%	3.9%
	Asian & Pacific Islander	2.3%	3.5%	5.4%	8.4%
	Other Races	16.9%	13.2%	14.0%	11.3%
	Hispanic or Latino Population	22.5%	16.7%	17.8%	12.4%
	Non Hispanic or Latino Population	77.5%	83.3%	82.2%	87.6%

This report was produced using data from private and government sources deemed to be reliable and is herein provided without representation or warranty.