

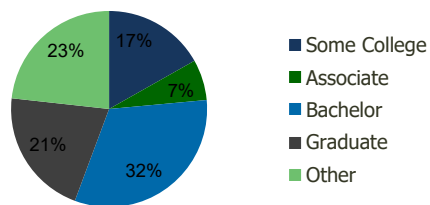
110680-Shawan Plaza Hunt Valley, MD	1.00 Mile Radius	3.00 Mile Radius	5.00 Mile Radius	10.00 Mile Radius
--	---------------------	---------------------	---------------------	----------------------

Demographics (2020)

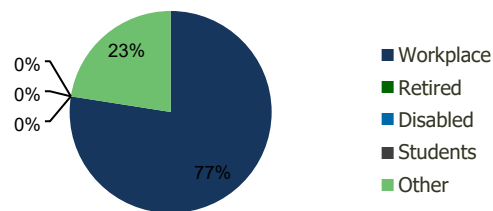
Current Population	3,130	30,898	66,634	368,876
Total Daytime Pop	26,235	72,730	108,828	502,758
Workplace Pop	24,751	56,346	73,979	258,380
Average Household Income	\$163,231	\$113,404	\$139,087	\$117,313
Median Household Income	\$122,639	\$75,756	\$92,631	\$82,217
Total Housing Units	1,210	13,747	27,805	150,338
Median Home Value	\$470,347	\$422,213	\$474,577	\$381,002
Bachelors Degree	30.7%	32.1%	34.1%	28.2%
Graduate Degree	29.4%	21.1%	25.9%	24.7%

Projections (2025)

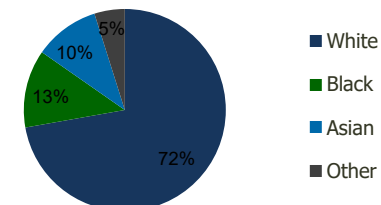
Projected Population	3,206	31,503	67,571	375,508
Projected 5 Year Pop Growth	0.5%	0.4%	0.3%	0.4%
Projected Households	1,240	14,027	28,225	153,323
Projected 5 Year Household Growth	0.5%	0.4%	0.3%	0.4%



Education (3-Mile)



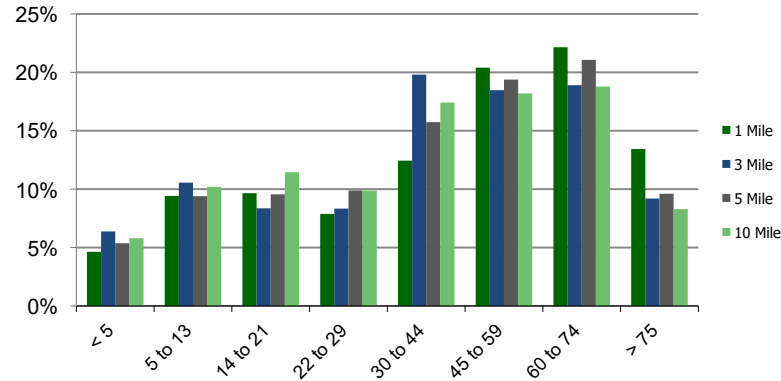
Daytime Population (3-Mile)



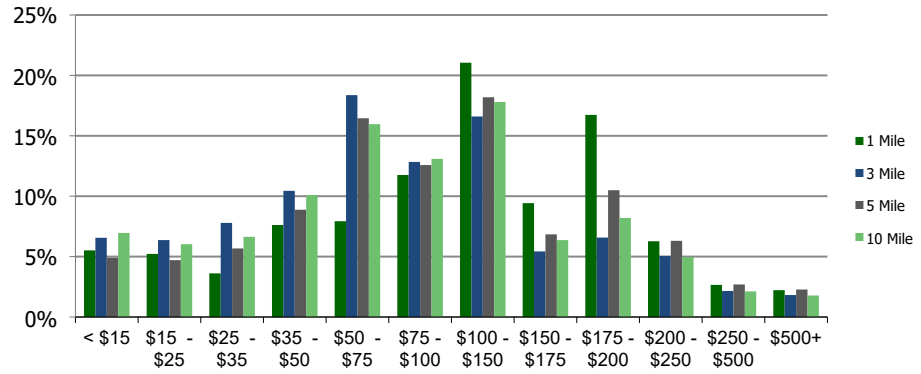
Ethnicity (3-Mile)

This report was produced using data from private and government sources deemed to be reliable and is herein provided without representation or warranty.

Population by Age Range



Household Income by Income Range (\$000)



110680-Shawan Plaza
Hunt Valley, MD

1.00 Mile
Radius

3.00 Mile
Radius

5.00 Mile
Radius

10.00 Mile
Radius

	1.00 Mile Radius	3.00 Mile Radius	5.00 Mile Radius	10.00 Mile Radius
Population	Current Estimated Population	3,130	30,898	66,634
	2010 Census Population	3,092	30,825	65,307
	2000 Census Population	2,622	28,387	61,065
	Historical Annual Growth 2000 to 2010	1.66%	0.83%	0.67%
	Estimated Annual Growth 2010 to 2020	0.12%	0.02%	0.19%
	Projected Annual Growth 2020 to 2025	0.48%	0.39%	0.28%
Households	Current Estimated Households	1,210	13,747	27,805
	2010 Census Households	1,196	13,677	27,202
	2000 Census Households	1,083	13,000	25,911
	Historical Annual Growth 2000 to 2010	1.0%	0.5%	0.5%
	Estimated Annual Growth 2010 to 2020	0.1%	0.0%	0.2%
	Projected Annual Growth 2020 to 2025	0.5%	0.4%	0.3%
	Population per Household	2.3	2.2	2.4
Ethnicity	White	86.7%	72.2%	78.9%
	Black or African American	3.0%	12.5%	7.9%
	Asian & Pacific Islander	8.7%	10.4%	9.4%
	Other Races	1.6%	4.9%	3.8%
	Hispanic or Latino Population	1.7%	8.2%	5.4%
	Non Hispanic or Latino Population	98.3%	91.8%	94.6%

This report was produced using data from private and government sources deemed to be reliable and is herein provided without representation or warranty.