

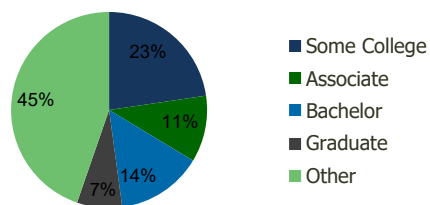
113840-Shops at Santa Barbara Cape Coral, FL	1.00 Mile Radius	3.00 Mile Radius	5.00 Mile Radius	10.00 Mile Radius
---	---------------------	---------------------	---------------------	----------------------

Demographics (2019)

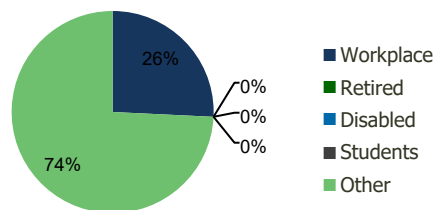
Current Population	9,338	81,079	160,929	408,707
Total Daytime Pop	8,490	61,803	132,958	444,760
Workplace Pop	1,354	15,921	34,848	163,538
Average Household Income	\$71,892	\$71,712	\$74,395	\$71,758
Median Household Income	\$60,741	\$58,060	\$59,135	\$53,688
Total Housing Units	3,509	32,117	64,720	176,221
Median Home Value	\$383,994	\$412,978	\$440,754	\$380,790
Bachelors Degree	11.3%	14.2%	15.8%	16.7%
Graduate Degree	4.2%	7.5%	8.0%	9.7%

Projections (2023)

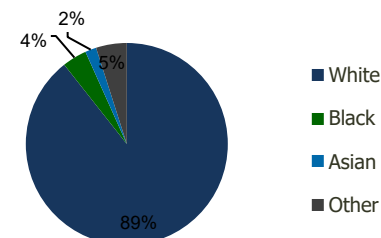
Projected Population	10,174	88,424	176,450	446,225
Projected 5 Year Pop Growth	1.7%	1.7%	1.9%	1.8%
Projected Households	3,820	34,885	70,607	191,475
Projected 5 Year Household Growth	1.7%	1.7%	1.8%	1.7%



Education (3-Mile)



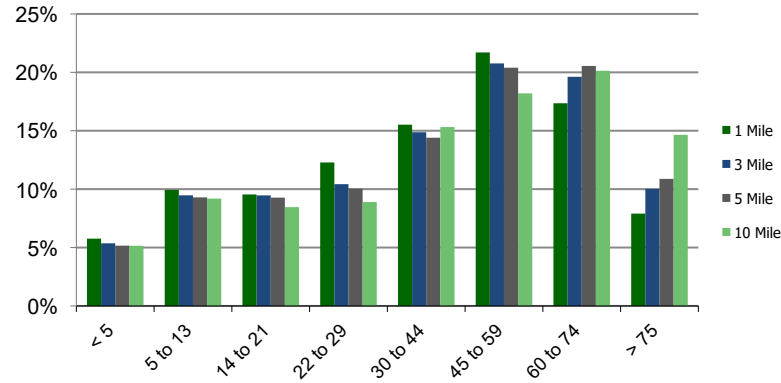
Daytime Population (3-Mile)



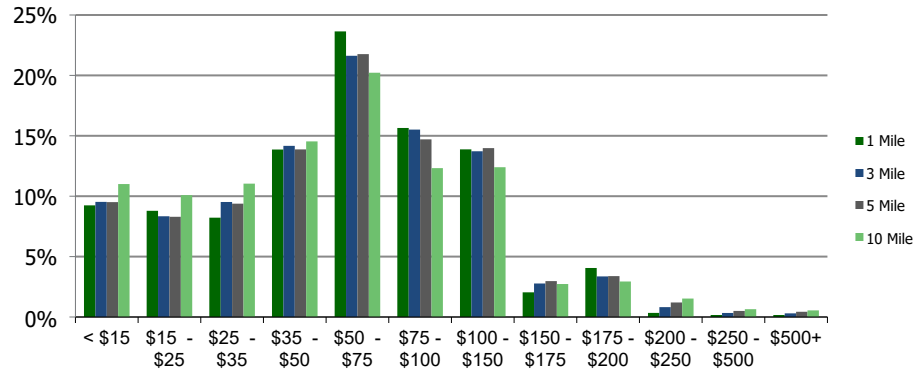
Ethnicity (3-Mile)

This report was produced using data from private and government sources deemed to be reliable and is herein provided without representation or warranty.

Population by Age Range



Household Income by Income Range (\$000)



113840-Shops at Santa Barbara 1.00 Mile Radius 3.00 Mile Radius 5.00 Mile Radius 10.00 Mile Radius
 Cape Coral, FL

	1.00 Mile Radius	3.00 Mile Radius	5.00 Mile Radius	10.00 Mile Radius
Population	Current Estimated Population	9,338	81,079	160,929
	2010 Census Population	7,840	67,829	133,054
	2000 Census Population	5,764	54,108	103,512
	Historical Annual Growth 2000 to 2010	3.12%	2.29%	2.54%
	Estimated Annual Growth 2010 to 2012	1.81%	1.85%	1.97%
	Projected Annual Growth 2012 to 2019	1.73%	1.75%	1.86%
Households	Current Estimated Households	3,509	32,117	64,720
	2010 Census Households	2,950	27,073	53,990
	2000 Census Households	1,984	20,885	41,818
	Historical Annual Growth 2000 to 2010	4.0%	2.6%	2.6%
	Estimated Annual Growth 2010 to 2012	1.8%	1.8%	1.9%
	Projected Annual Growth 2012 to 2019	1.7%	1.7%	1.8%
	Population per Household	2.7	2.5	2.5
Ethnicity	White	86.2%	89.4%	89.5%
	Black or African American	4.6%	3.9%	4.1%
	Asian & Pacific Islander	3.1%	1.8%	1.6%
	Other Races	6.2%	4.9%	4.8%
	Hispanic or Latino Population	22.8%	19.2%	18.4%
	Non Hispanic or Latino Population	77.2%	80.8%	81.6%

This report was produced using data from private and government sources deemed to be reliable and is herein provided without representation or warranty.