

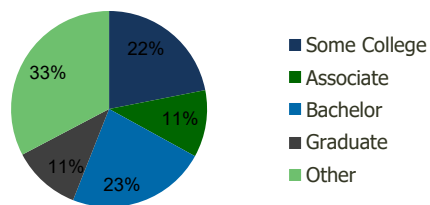
111860-Curlew Crossing S.C. Clearwater, FL	1.00 Mile Radius	3.00 Mile Radius	5.00 Mile Radius	10.00 Mile Radius
---	---------------------	---------------------	---------------------	----------------------

Demographics (2020)

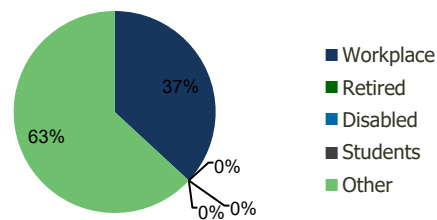
Current Population	12,198	101,789	207,257	513,282
Total Daytime Pop	12,097	102,398	211,577	507,495
Workplace Pop	4,747	37,757	80,901	192,086
Average Household Income	\$80,672	\$79,114	\$81,064	\$82,518
Median Household Income	\$54,357	\$57,248	\$58,775	\$57,432
Total Housing Units	5,490	48,014	95,524	226,421
Median Home Value	\$361,258	\$359,879	\$366,758	\$360,272
Bachelors Degree	20.6%	23.0%	22.8%	21.3%
Graduate Degree	11.2%	11.3%	11.8%	11.5%

Projections (2025)

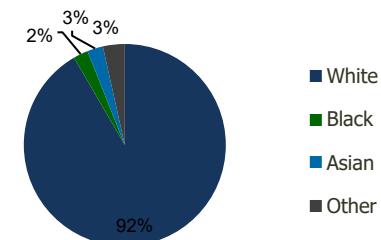
Projected Population	12,067	100,090	204,712	518,318
Projected 5 Year Pop Growth	-0.2%	-0.3%	-0.2%	0.2%
Projected Households	5,426	47,156	94,303	228,148
Projected 5 Year Household Growth	-0.2%	-0.4%	-0.3%	0.2%



Education (3-Mile)



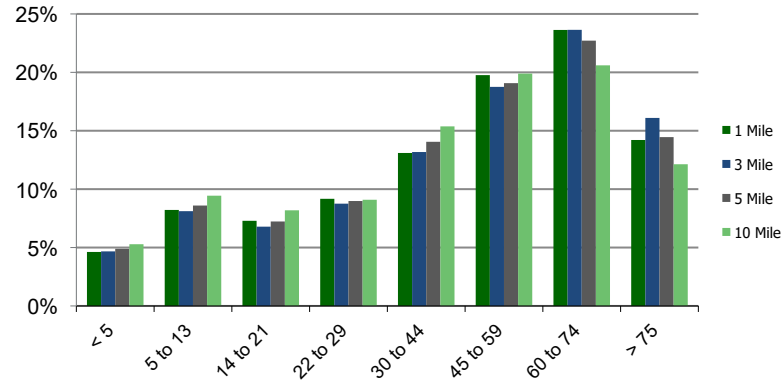
Daytime Population (3-Mile)



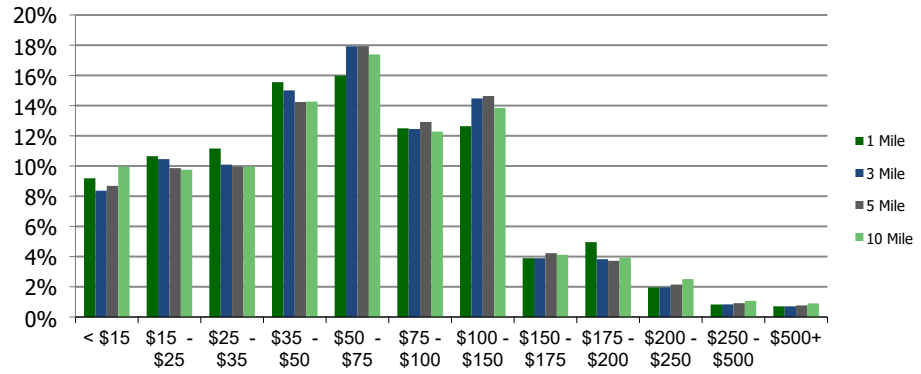
Ethnicity (3-Mile)

This report was produced using data from private and government sources deemed to be reliable and is herein provided without representation or warranty.

Population by Age Range



Household Income by Income Range (\$000)



111860-Curlew Crossing S.C. Clearwater, FL	1.00 Mile Radius	3.00 Mile Radius	5.00 Mile Radius	10.00 Mile Radius
--	------------------	------------------	------------------	-------------------

	1.00 Mile Radius	3.00 Mile Radius	5.00 Mile Radius	10.00 Mile Radius	
Population	Current Estimated Population	12,198	101,789	207,257	
	2010 Census Population	11,439	99,248	199,617	
	2000 Census Population	11,423	102,950	202,594	
	Historical Annual Growth 2000 to 2010	0.01%	-0.37%	-0.15%	0.61%
	Estimated Annual Growth 2010 to 2020	0.60%	0.24%	0.35%	0.68%
	Projected Annual Growth 2020 to 2025	-0.22%	-0.34%	-0.25%	0.20%
Households	Current Estimated Households	5,490	48,014	95,524	
	2010 Census Households	5,175	47,033	92,102	
	2000 Census Households	4,953	46,686	90,491	
	Historical Annual Growth 2000 to 2010	0.4%	0.1%	0.2%	0.6%
	Estimated Annual Growth 2010 to 2020	0.6%	0.2%	0.3%	0.6%
	Projected Annual Growth 2020 to 2025	-0.2%	-0.4%	-0.3%	0.2%
	Population per Household	2.2	2.1	2.2	2.2
Ethnicity	White	90.0%	91.6%	89.2%	
	Black or African American	2.5%	2.4%	3.9%	
	Asian & Pacific Islander	3.8%	2.5%	2.6%	
	Other Races	3.7%	3.5%	4.2%	
	Hispanic or Latino Population	10.1%	7.3%	8.7%	
	Non Hispanic or Latino Population	89.9%	92.7%	91.3%	

This report was produced using data from private and government sources deemed to be reliable and is herein provided without representation or warranty.