

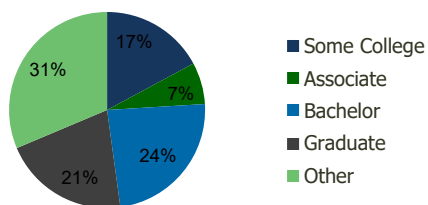
104630-Gaithersburg S.C. Gaithersburg, MD	1.00 Mile Radius	3.00 Mile Radius	5.00 Mile Radius	10.00 Mile Radius
--	---------------------	---------------------	---------------------	----------------------

Demographics (2019)

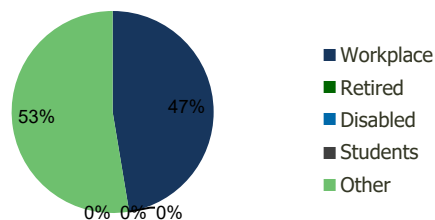
Current Population	14,354	152,052	287,525	565,148
Total Daytime Pop	15,914	131,475	266,390	598,606
Workplace Pop	9,884	62,290	135,939	287,760
Average Household Income	\$83,928	\$99,802	\$121,987	\$137,893
Median Household Income	\$66,000	\$80,731	\$97,371	\$106,571
Total Housing Units	5,617	54,045	102,206	202,694
Median Home Value	\$317,755	\$386,388	\$474,882	\$563,695
Bachelors Degree	24.7%	23.8%	27.2%	27.5%
Graduate Degree	17.3%	20.8%	26.5%	29.7%

Projections (2024)

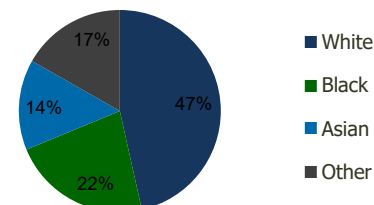
Projected Population	14,870	157,634	301,659	596,000
Projected 5 Year Pop Growth	0.7%	0.7%	1.0%	1.1%
Projected Households	5,818	56,047	107,345	213,892
Projected 5 Year Household Growth	0.7%	0.7%	1.0%	1.1%



Education (3-Mile)



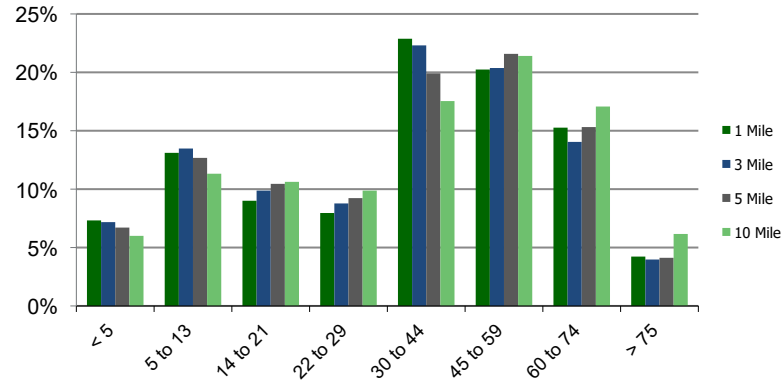
Daytime Population (3-Mile)



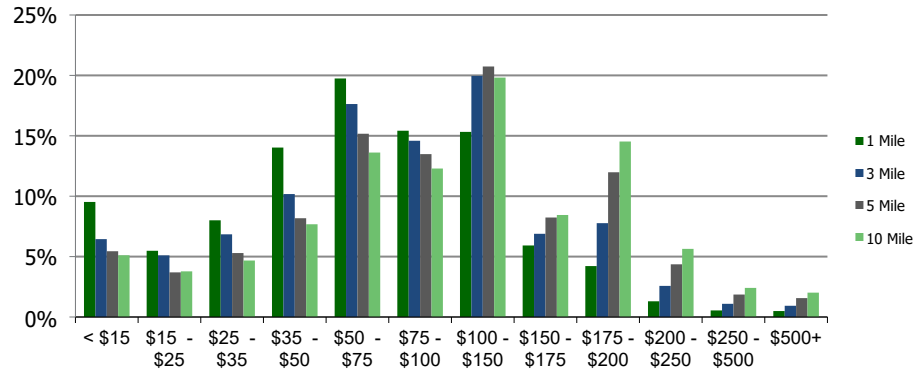
Ethnicity (3-Mile)

This report was produced using data from private and government sources deemed to be reliable and is herein provided without representation or warranty.

Population by Age Range



Household Income by Income Range (\$000)



104630-Gaithersburg S.C.
Gaithersburg, MD

1.00 Mile
Radius

3.00 Mile
Radius

5.00 Mile
Radius

10.00 Mile
Radius

	1.00 Mile Radius	3.00 Mile Radius	5.00 Mile Radius	10.00 Mile Radius
Population	Current Estimated Population	14,354	152,052	287,525
	2010 Census Population	13,749	145,813	267,592
	2000 Census Population	12,750	133,386	225,617
	Historical Annual Growth 2000 to 2010	0.76%	0.89%	1.72%
	Estimated Annual Growth 2010 to 2019	0.44%	0.43%	0.74%
	Projected Annual Growth 2019 to 2024	0.71%	0.72%	0.96%
Households	Current Estimated Households	5,617	54,045	102,206
	2010 Census Households	5,412	51,970	94,986
	2000 Census Households	5,326	49,298	81,179
	Historical Annual Growth 2000 to 2010	0.2%	0.5%	1.6%
	Estimated Annual Growth 2010 to 2019	0.4%	0.4%	0.8%
	Projected Annual Growth 2019 to 2024	0.7%	0.7%	1.0%
	Population per Household	2.5	2.8	2.8
Ethnicity	White	43.6%	46.5%	50.2%
	Black or African American	25.1%	22.3%	18.4%
	Asian & Pacific Islander	13.6%	14.5%	18.6%
	Other Races	17.7%	16.8%	12.7%
	Hispanic or Latino Population	28.9%	28.0%	20.7%
	Non Hispanic or Latino Population	71.1%	72.0%	79.3%

This report was produced using data from private and government sources deemed to be reliable and is herein provided without representation or warranty.