

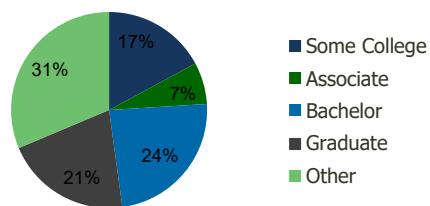
104630-Gaithersburg S.C. Gaithersburg, MD	1.00 Mile Radius	3.00 Mile Radius	5.00 Mile Radius	10.00 Mile Radius
--	---------------------	---------------------	---------------------	----------------------

Demographics (2019)

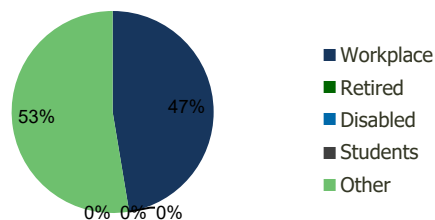
Current Population	14,354	152,067	287,251	564,132
Total Daytime Pop	15,914	131,475	265,438	600,577
Workplace Pop	9,884	62,290	135,789	289,807
Average Household Income	\$83,928	\$99,816	\$121,900	\$138,083
Median Household Income	\$66,000	\$80,736	\$97,293	\$106,732
Total Housing Units	5,617	54,050	102,096	202,369
Median Home Value	\$317,755	\$386,414	\$474,631	\$564,149
Bachelors Degree	24.7%	23.8%	27.2%	27.6%
Graduate Degree	17.3%	20.8%	26.5%	29.7%

Projections (2023)

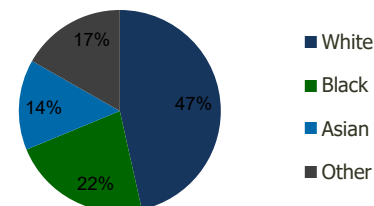
Projected Population	14,870	157,649	301,349	594,942
Projected 5 Year Pop Growth	0.7%	0.7%	1.0%	1.1%
Projected Households	5,818	56,052	107,221	213,550
Projected 5 Year Household Growth	0.7%	0.7%	1.0%	1.1%



Education (3-Mile)



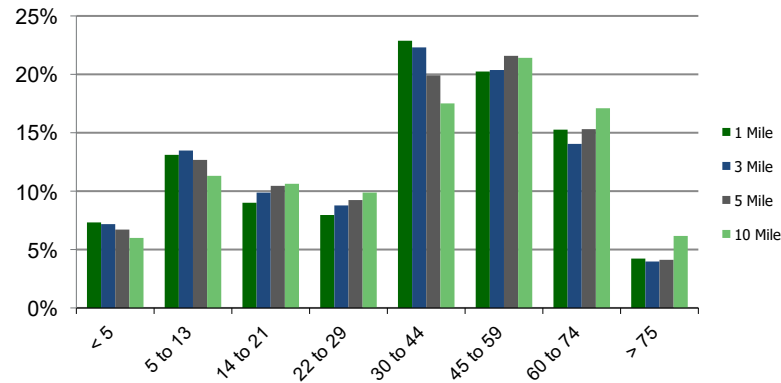
Daytime Population (3-Mile)



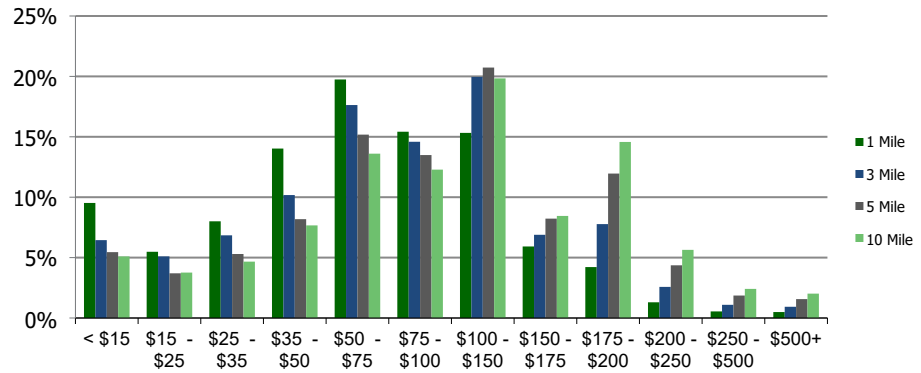
Ethnicity (3-Mile)

This report was produced using data from private and government sources deemed to be reliable and is herein provided without representation or warranty.

Population by Age Range



Household Income by Income Range (\$000)



104630-Gaithersburg S.C.
Gaithersburg, MD

1.00 Mile
Radius

3.00 Mile
Radius

5.00 Mile
Radius

10.00 Mile
Radius

	1.00 Mile Radius	3.00 Mile Radius	5.00 Mile Radius	10.00 Mile Radius
Population	Current Estimated Population	14,354	152,067	287,251
	2010 Census Population	13,749	145,827	267,388
	2000 Census Population	12,750	133,400	225,516
	Historical Annual Growth 2000 to 2010	0.76%	0.89%	1.72%
	Estimated Annual Growth 2010 to 2012	0.44%	0.43%	0.74%
	Projected Annual Growth 2012 to 2019	0.71%	0.72%	0.96%
Households	Current Estimated Households	5,617	54,050	102,096
	2010 Census Households	5,412	51,975	94,902
	2000 Census Households	5,326	49,302	81,130
	Historical Annual Growth 2000 to 2010	0.2%	0.5%	1.6%
	Estimated Annual Growth 2010 to 2012	0.4%	0.4%	0.8%
	Projected Annual Growth 2012 to 2019	0.7%	0.7%	1.0%
	Population per Household	2.5	2.8	2.8
Ethnicity	White	43.6%	46.5%	50.2%
	Black or African American	25.1%	22.3%	18.4%
	Asian & Pacific Islander	13.6%	14.5%	18.6%
	Other Races	17.7%	16.8%	12.7%
	Hispanic or Latino Population	28.9%	28.0%	20.7%
	Non Hispanic or Latino Population	71.1%	72.0%	79.3%

This report was produced using data from private and government sources deemed to be reliable and is herein provided without representation or warranty.