

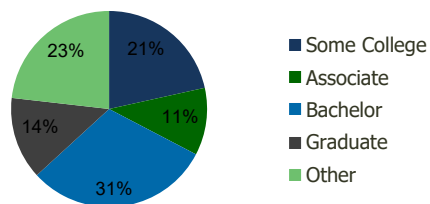
115580-The Fountains at Arbor Lakes Maple Grove, MN	1.00 Mile Radius	3.00 Mile Radius	5.00 Mile Radius	10.00 Mile Radius
--	---------------------	---------------------	---------------------	----------------------

## Demographics (2019)

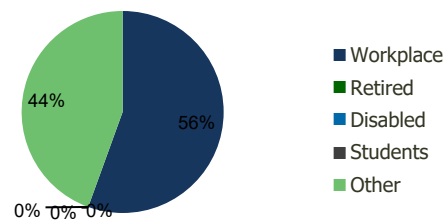
Current Population	4,878	64,098	204,658	676,847
Total Daytime Pop	14,061	117,445	243,410	811,902
Workplace Pop	9,702	65,223	119,006	434,016
Average Household Income	\$105,352	\$106,646	\$105,306	\$96,430
Median Household Income	\$93,084	\$82,792	\$80,840	\$72,713
Total Housing Units	2,035	25,176	77,310	261,955
Median Home Value	\$366,632	\$337,296	\$339,437	\$307,916
Bachelors Degree	38.7%	30.5%	28.3%	25.0%
Graduate Degree	17.2%	13.6%	13.7%	12.2%

## Projections (2023)

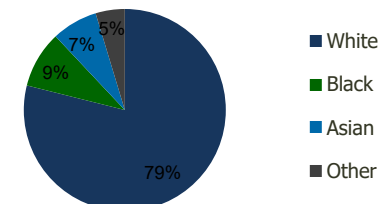
Projected Population	5,538	70,896	223,309	717,353
Projected 5 Year Pop Growth	2.6%	2.0%	1.8%	1.2%
Projected Households	2,312	27,866	84,403	277,609
Projected 5 Year Household Growth	2.6%	2.1%	1.8%	1.2%



Education (3-Mile)



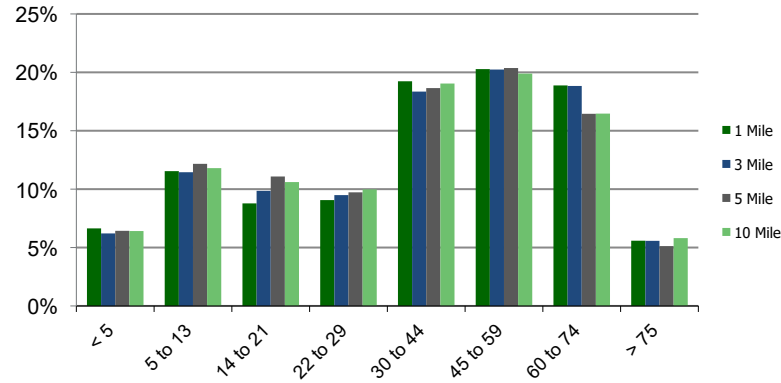
Daytime Population (3-Mile)



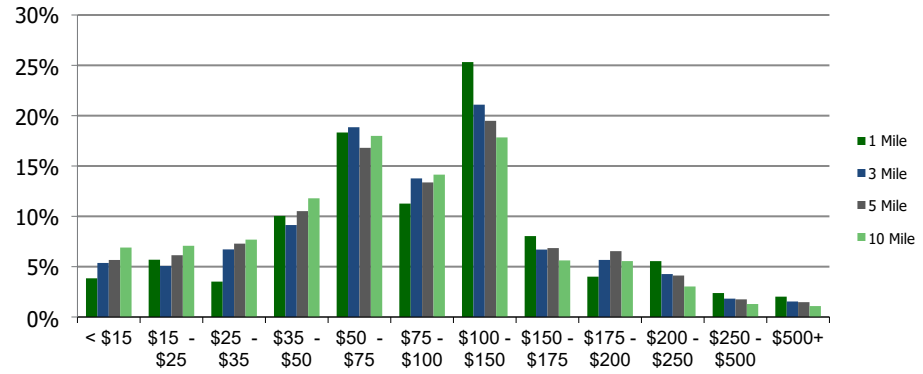
Ethnicity (3-Mile)

This report was produced using data from private and government sources deemed to be reliable and is herein provided without representation or warranty.

**Population by Age Range**



**Household Income by Income Range (\$000)**



<b>115580-The Fountains at Arbor</b> Maple Grove, MN	<b>1.00 Mile Radius</b>	<b>3.00 Mile Radius</b>	<b>5.00 Mile Radius</b>	<b>10.00 Mile Radius</b>
---	-------------------------	-------------------------	-------------------------	--------------------------

<b>Population</b>	Current Estimated Population	4,878	64,098	204,658	676,847
	2010 Census Population	3,902	55,014	180,304	620,898
	2000 Census Population	3,511	52,865	162,450	600,314
	Historical Annual Growth 2000 to 2010	1.06%	0.40%	1.05%	0.34%
	Estimated Annual Growth 2010 to 2012	2.32%	1.58%	1.31%	0.89%
	Projected Annual Growth 2012 to 2019	2.57%	2.04%	1.76%	1.17%
<b>Households</b>	Current Estimated Households	2,035	25,176	77,310	261,955
	2010 Census Households	1,625	21,515	67,929	240,241
	2000 Census Households	1,365	19,398	60,518	227,431
	Historical Annual Growth 2000 to 2010	1.8%	1.0%	1.2%	0.5%
	Estimated Annual Growth 2010 to 2012	2.3%	1.6%	1.3%	0.9%
	Projected Annual Growth 2012 to 2019	2.6%	2.1%	1.8%	1.2%
	Population per Household	2.4	2.5	2.6	2.6
<b>Ethnicity</b>	White	84.2%	78.9%	71.4%	72.4%
	Black or African American	5.9%	9.1%	13.8%	13.7%
	Asian & Pacific Islander	6.2%	7.3%	9.4%	7.6%
	Other Races	3.7%	4.7%	5.5%	6.3%
	Hispanic or Latino Population	3.2%	3.8%	5.0%	5.4%
	Non Hispanic or Latino Population	96.8%	96.2%	95.0%	94.6%

This report was produced using data from private and government sources deemed to be reliable and is herein provided without representation or warranty.