

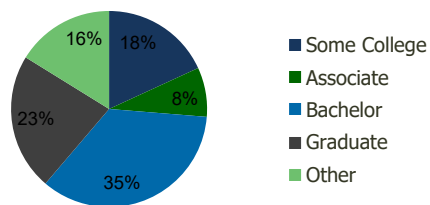
105520-Ridgedale Festival Center Minnetonka, MN	1.00 Mile Radius	3.00 Mile Radius	5.00 Mile Radius	10.00 Mile Radius
--	---------------------	---------------------	---------------------	----------------------

Demographics (2020)

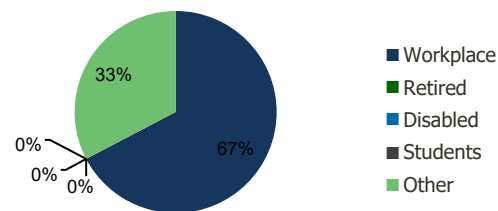
Current Population	6,864	51,660	171,786	812,913
Total Daytime Pop	20,740	101,055	250,634	1,290,867
Workplace Pop	15,573	68,026	156,197	752,567
Average Household Income	\$145,327	\$139,058	\$125,837	\$117,962
Median Household Income	\$93,815	\$91,630	\$89,619	\$81,535
Total Housing Units	3,263	23,246	74,145	347,176
Median Home Value	\$538,939	\$437,607	\$410,347	\$392,630
Bachelors Degree	37.3%	35.0%	36.0%	33.0%
Graduate Degree	29.0%	22.6%	20.7%	19.9%

Projections (2025)

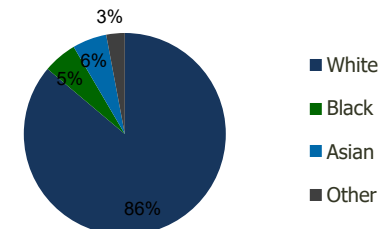
Projected Population	7,343	54,378	181,544	866,138
Projected 5 Year Pop Growth	1.4%	1.0%	1.1%	1.3%
Projected Households	3,489	24,494	78,359	371,659
Projected 5 Year Household Growth	1.3%	1.1%	1.1%	1.4%



Education (3-Mile)



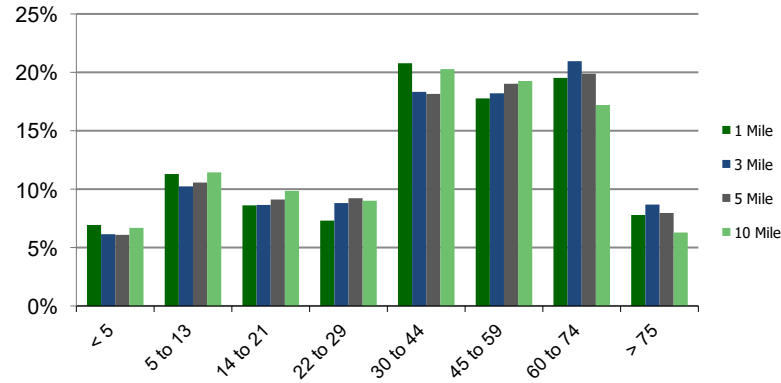
Daytime Population (3-Mile)



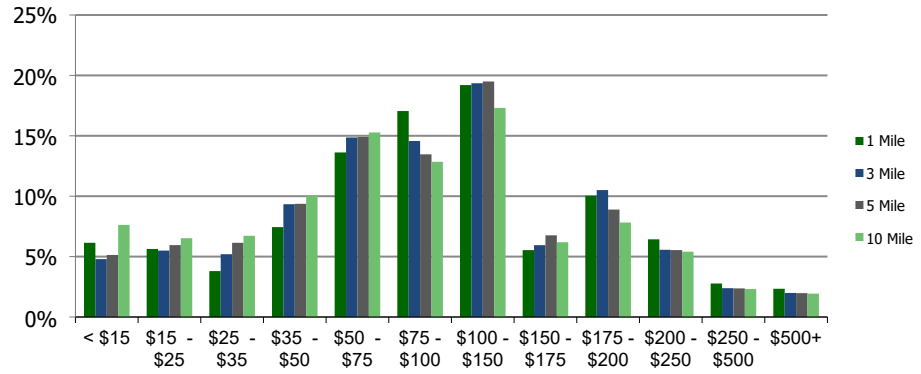
Ethnicity (3-Mile)

This report was produced using data from private and government sources deemed to be reliable and is herein provided without representation or warranty.

Population by Age Range



Household Income by Income Range (\$000)



105520-Ridgedale Festival Center Minnetonka, MN	1.00 Mile Radius	3.00 Mile Radius	5.00 Mile Radius	10.00 Mile Radius
---	-------------------------	-------------------------	-------------------------	--------------------------

Population	Current Estimated Population	6,864	51,660	171,786	812,913
	2010 Census Population	6,017	48,455	159,997	743,379
	2000 Census Population	5,668	49,683	162,566	730,533
	Historical Annual Growth 2000 to 2010	0.60%	-0.25%	-0.16%	0.17%
	Estimated Annual Growth 2010 to 2020	1.23%	0.60%	0.66%	0.84%
	Projected Annual Growth 2020 to 2025	1.36%	1.03%	1.11%	1.28%
Households	Current Estimated Households	3,263	23,246	74,145	347,176
	2010 Census Households	2,871	21,822	69,159	314,907
	2000 Census Households	2,530	21,256	67,393	302,624
	Historical Annual Growth 2000 to 2010	1.3%	0.3%	0.3%	0.4%
	Estimated Annual Growth 2010 to 2020	1.2%	0.6%	0.6%	0.9%
	Projected Annual Growth 2020 to 2025	1.3%	1.1%	1.1%	1.4%
	Population per Household	2.1	2.2	2.3	2.3
Ethnicity	White	84.7%	86.1%	83.6%	74.1%
	Black or African American	4.4%	5.4%	6.7%	12.8%
	Asian & Pacific Islander	7.9%	5.5%	5.5%	6.4%
	Other Races	3.0%	3.0%	4.2%	6.8%
	Hispanic or Latino Population	3.6%	3.0%	3.9%	6.1%
	Non Hispanic or Latino Population	96.4%	97.0%	96.1%	93.9%

This report was produced using data from private and government sources deemed to be reliable and is herein provided without representation or warranty.