

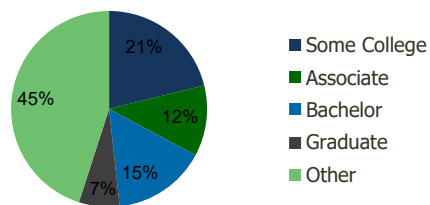
113870-Coral Pointe S.C. Cape Coral, FL	1.00 Mile Radius	3.00 Mile Radius	5.00 Mile Radius	10.00 Mile Radius
--	---------------------	---------------------	---------------------	----------------------

### Demographics (2020)

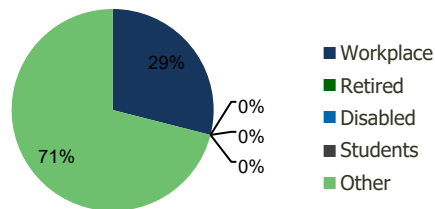
Current Population	8,730	66,257	181,656	451,822
Total Daytime Pop	6,994	51,263	181,321	486,535
Workplace Pop	3,056	14,852	69,168	175,321
Average Household Income	\$75,673	\$72,988	\$73,301	\$76,813
Median Household Income	\$64,342	\$58,724	\$56,284	\$56,610
Total Housing Units	3,583	26,977	75,139	192,972
Median Home Value	\$405,674	\$394,217	\$393,515	\$372,839
Bachelors Degree	14.1%	15.5%	16.6%	17.5%
Graduate Degree	7.3%	6.7%	8.1%	10.1%

### Projections (2025)

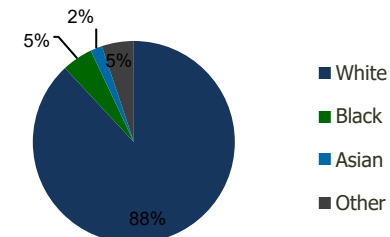
Projected Population	9,180	70,418	196,415	497,927
Projected 5 Year Pop Growth	1.0%	1.2%	1.6%	2.0%
Projected Households	3,769	28,612	80,930	211,739
Projected 5 Year Household Growth	1.0%	1.2%	1.5%	1.9%



Education (3-Mile)



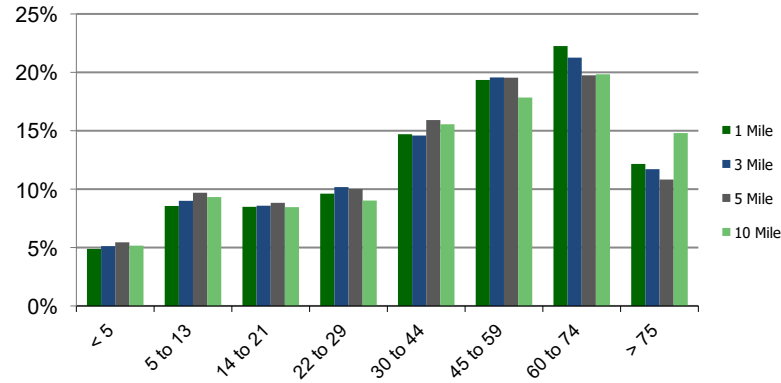
Daytime Population (3-Mile)



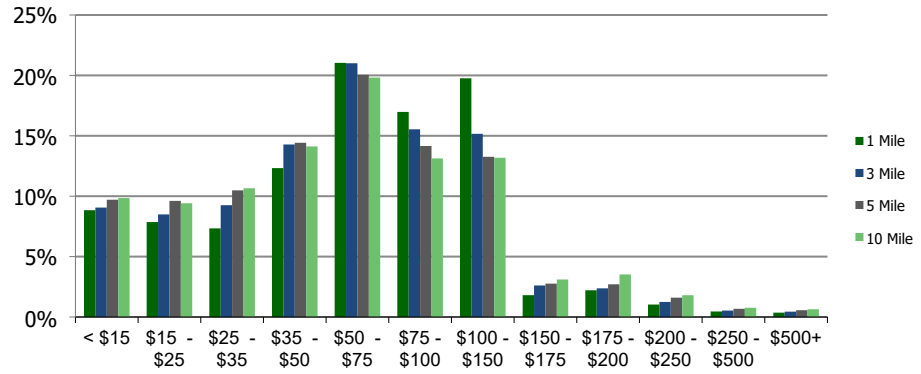
Ethnicity (3-Mile)

This report was produced using data from private and government sources deemed to be reliable and is herein provided without representation or warranty.

**Population by Age Range**



**Household Income by Income Range (\$000)**



<b>113870-Coral Pointe S.C.</b> Cape Coral, FL	<b>1.00 Mile Radius</b>	<b>3.00 Mile Radius</b>	<b>5.00 Mile Radius</b>	<b>10.00 Mile Radius</b>
---	-------------------------	-------------------------	-------------------------	--------------------------

<b>Population</b>	Current Estimated Population	8,730	66,257	181,656	451,822
	2010 Census Population	7,849	57,820	152,230	364,869
	2000 Census Population	6,756	51,269	132,582	289,121
	Historical Annual Growth 2000 to 2010	1.51%	1.21%	1.39%	2.35%
	Estimated Annual Growth 2010 to 2020	0.99%	1.28%	1.66%	2.01%
	Projected Annual Growth 2020 to 2025	1.01%	1.23%	1.57%	1.96%
<b>Households</b>	Current Estimated Households	3,583	26,977	75,139	192,972
	2010 Census Households	3,218	23,633	63,380	157,111
	2000 Census Households	2,607	20,148	54,803	124,572
	Historical Annual Growth 2000 to 2010	2.1%	1.6%	1.5%	2.3%
	Estimated Annual Growth 2010 to 2020	1.0%	1.2%	1.6%	1.9%
	Projected Annual Growth 2020 to 2025	1.0%	1.2%	1.5%	1.9%
	Population per Household	2.4	2.4	2.4	2.3
<b>Ethnicity</b>	White	86.3%	88.1%	85.5%	83.7%
	Black or African American	4.7%	4.9%	7.5%	8.6%
	Asian & Pacific Islander	3.3%	1.9%	1.6%	1.7%
	Other Races	5.7%	5.1%	5.5%	6.1%
	Hispanic or Latino Population	15.9%	19.8%	19.5%	17.9%
	Non Hispanic or Latino Population	84.1%	80.2%	80.5%	82.1%

This report was produced using data from private and government sources deemed to be reliable and is herein provided without representation or warranty.