

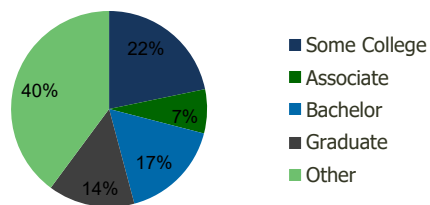
110690-Shoppes at Easton Easton, MD	1.00 Mile Radius	3.00 Mile Radius	5.00 Mile Radius	10.00 Mile Radius
--	---------------------	---------------------	---------------------	----------------------

Demographics (2019)

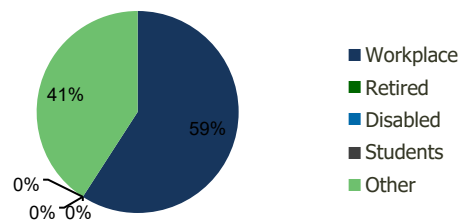
Current Population	5,901	18,258	21,956	38,395
Total Daytime Pop	9,088	27,987	29,680	44,001
Workplace Pop	5,507	16,549	17,099	21,266
Average Household Income	\$70,477	\$83,334	\$90,830	\$99,773
Median Household Income	\$51,461	\$57,200	\$59,892	\$66,116
Total Housing Units	2,396	7,684	9,258	16,137
Median Home Value	\$342,058	\$359,347	\$368,834	\$384,221
Bachelors Degree	13.9%	16.8%	18.1%	18.8%
Graduate Degree	11.4%	14.3%	15.1%	16.2%

Projections (2024)

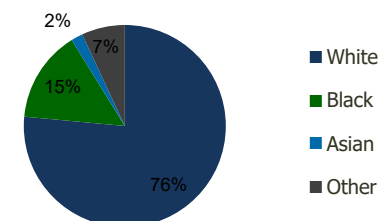
Projected Population	6,086	18,859	22,680	39,697
Projected 5 Year Pop Growth	0.6%	0.7%	0.7%	0.7%
Projected Households	2,473	7,941	9,568	16,692
Projected 5 Year Household Growth	0.6%	0.7%	0.7%	0.7%



Education (3-Mile)



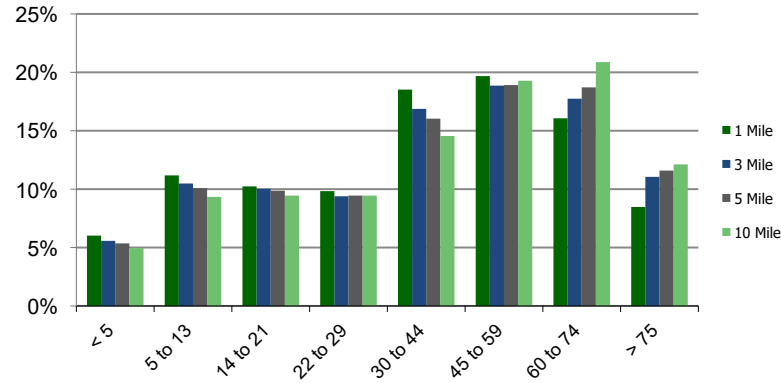
Daytime Population (3-Mile)



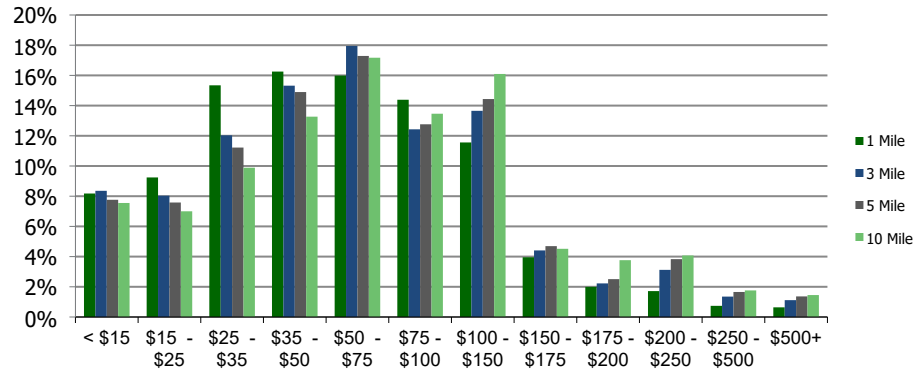
Ethnicity (3-Mile)

This report was produced using data from private and government sources deemed to be reliable and is herein provided without representation or warranty.

Population by Age Range



Household Income by Income Range (\$000)



110690-Shoppes at Easton
Easton, MD

1.00 Mile
Radius

3.00 Mile
Radius

5.00 Mile
Radius

10.00 Mile
Radius

	1.00 Mile Radius	3.00 Mile Radius	5.00 Mile Radius	10.00 Mile Radius
Population				
Current Estimated Population	5,901	18,258	21,956	38,395
2010 Census Population	5,858	18,208	21,997	38,422
2000 Census Population	4,838	14,452	17,930	34,132
Historical Annual Growth 2000 to 2010	1.93%	2.34%	2.07%	1.19%
Estimated Annual Growth 2010 to 2019	0.08%	0.03%	-0.02%	-0.01%
Projected Annual Growth 2019 to 2024	0.62%	0.65%	0.65%	0.67%
Households				
Current Estimated Households	2,396	7,684	9,258	16,137
2010 Census Households	2,378	7,666	9,281	16,148
2000 Census Households	2,083	6,153	7,575	14,240
Historical Annual Growth 2000 to 2010	1.3%	2.2%	2.1%	1.3%
Estimated Annual Growth 2010 to 2019	0.1%	0.0%	0.0%	0.0%
Projected Annual Growth 2019 to 2024	0.6%	0.7%	0.7%	0.7%
Population per Household	2.4	2.3	2.3	2.4
Ethnicity				
White	75.1%	76.5%	78.3%	80.9%
Black or African American	14.0%	14.7%	13.7%	13.0%
Asian & Pacific Islander	2.2%	1.9%	1.8%	1.3%
Other Races	8.7%	6.9%	6.2%	4.8%
Hispanic or Latino Population	11.1%	9.9%	8.6%	5.9%
Non Hispanic or Latino Population	88.9%	90.1%	91.4%	94.1%

This report was produced using data from private and government sources deemed to be reliable and is herein provided without representation or warranty.