

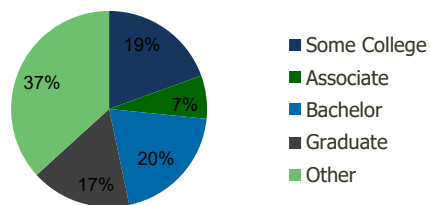
110690-Shoppes at Easton Easton, MD	1.00 Mile Radius	3.00 Mile Radius	5.00 Mile Radius	10.00 Mile Radius
--	---------------------	---------------------	---------------------	----------------------

Demographics (2020)

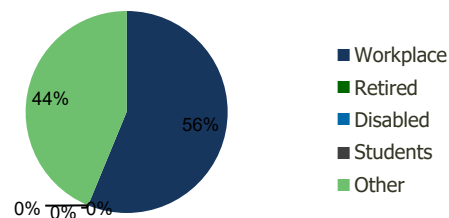
Current Population	5,914	18,288	21,990	38,330
Total Daytime Pop	8,947	27,419	29,132	43,588
Workplace Pop	5,134	15,417	15,893	19,759
Average Household Income	\$74,001	\$86,548	\$95,421	\$104,388
Median Household Income	\$58,154	\$64,527	\$67,539	\$72,877
Total Housing Units	2,402	7,700	9,276	16,104
Median Home Value	\$310,296	\$322,287	\$330,777	\$346,552
Bachelors Degree	19.9%	20.1%	20.1%	20.1%
Graduate Degree	14.4%	16.6%	17.7%	18.2%

Projections (2025)

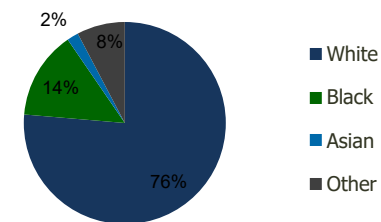
Projected Population	6,116	18,912	22,732	39,551
Projected 5 Year Pop Growth	0.7%	0.7%	0.7%	0.6%
Projected Households	2,485	7,966	9,592	16,613
Projected 5 Year Household Growth	0.7%	0.7%	0.7%	0.6%



Education (3-Mile)



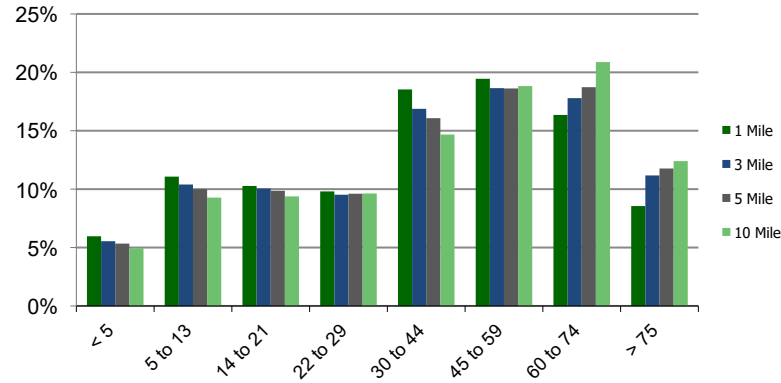
Daytime Population (3-Mile)



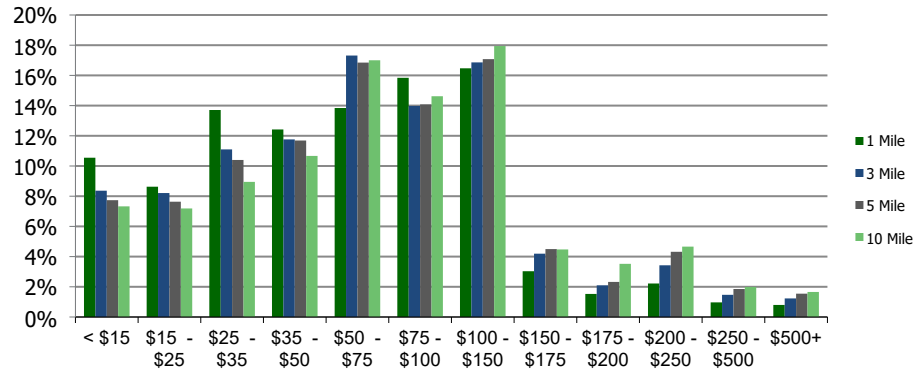
Ethnicity (3-Mile)

This report was produced using data from private and government sources deemed to be reliable and is herein provided without representation or warranty.

Population by Age Range



Household Income by Income Range (\$000)



110690-Shoppes at Easton

Easton, MD

1.00 Mile Radius

3.00 Mile Radius

5.00 Mile Radius

10.00 Mile Radius

	1.00 Mile Radius	3.00 Mile Radius	5.00 Mile Radius	10.00 Mile Radius
Population				
Current Estimated Population	5,914	18,288	21,990	38,330
2010 Census Population	5,858	18,208	21,997	38,422
2000 Census Population	4,838	14,452	17,930	34,132
Historical Annual Growth 2000 to 2010	1.93%	2.34%	2.07%	1.19%
Estimated Annual Growth 2010 to 2020	0.09%	0.04%	0.00%	-0.02%
Projected Annual Growth 2020 to 2025	0.67%	0.67%	0.67%	0.63%
Households				
Current Estimated Households	2,402	7,700	9,276	16,104
2010 Census Households	2,378	7,666	9,281	16,148
2000 Census Households	2,083	6,153	7,575	14,240
Historical Annual Growth 2000 to 2010	1.3%	2.2%	2.1%	1.3%
Estimated Annual Growth 2010 to 2020	0.1%	0.0%	0.0%	0.0%
Projected Annual Growth 2020 to 2025	0.7%	0.7%	0.7%	0.6%
Population per Household	2.4	2.3	2.3	2.4
Ethnicity				
White	75.1%	76.3%	78.0%	80.8%
Black or African American	13.6%	14.1%	13.2%	12.6%
Asian & Pacific Islander	1.9%	1.8%	1.8%	1.3%
Other Races	9.5%	7.7%	6.9%	5.2%
Hispanic or Latino Population	11.1%	10.1%	8.8%	6.2%
Non Hispanic or Latino Population	88.9%	89.9%	91.2%	93.8%

This report was produced using data from private and government sources deemed to be reliable and is herein provided without representation or warranty.