

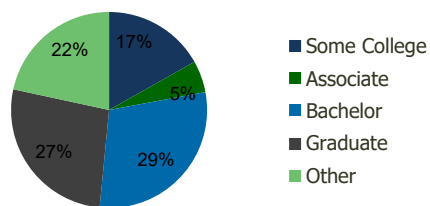
101560-Snowden Square S.C. Columbia, MD	1.00 Mile Radius	3.00 Mile Radius	5.00 Mile Radius	10.00 Mile Radius
--	---------------------	---------------------	---------------------	----------------------

Demographics (2019)

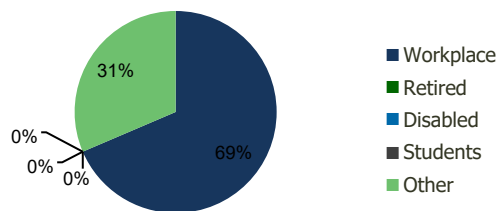
Current Population	4,230	84,944	212,504	652,056
Total Daytime Pop	24,886	127,908	299,372	799,839
Workplace Pop	21,837	87,707	181,314	423,273
Average Household Income	\$119,836	\$116,883	\$126,786	\$118,247
Median Household Income	\$110,808	\$104,661	\$108,378	\$95,914
Total Housing Units	1,672	32,650	78,781	241,600
Median Home Value	\$389,024	\$411,664	\$449,576	\$436,996
Bachelors Degree	29.8%	29.5%	29.5%	26.0%
Graduate Degree	30.1%	26.8%	27.5%	23.1%

Projections (2023)

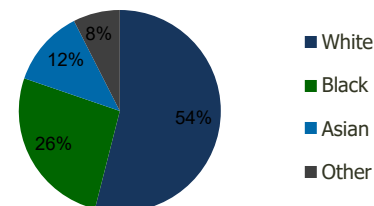
Projected Population	4,176	89,348	224,786	681,027
Projected 5 Year Pop Growth	-0.3%	1.0%	1.1%	0.9%
Projected Households	1,649	34,258	83,320	252,403
Projected 5 Year Household Growth	-0.3%	1.0%	1.1%	0.9%



Education (3-Mile)



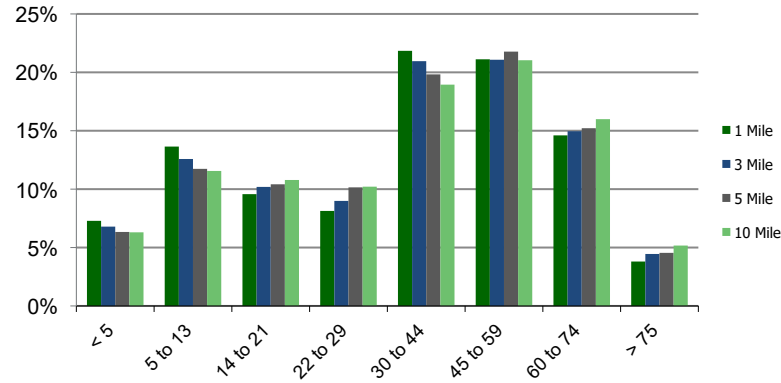
Daytime Population (3-Mile)



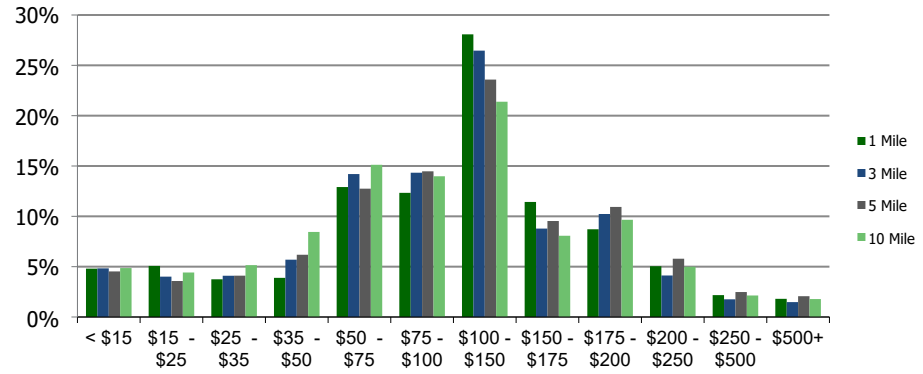
Ethnicity (3-Mile)

This report was produced using data from private and government sources deemed to be reliable and is herein provided without representation or warranty.

Population by Age Range



Household Income by Income Range (\$000)



	1.00 Mile Radius	3.00 Mile Radius	5.00 Mile Radius	10.00 Mile Radius
101560-Snowden Square S.C.				
Columbia, MD				

Population	Current Estimated Population	4,230	84,944	212,504	652,056
	2010 Census Population	4,339	75,800	187,138	591,925
	2000 Census Population	4,006	71,041	166,883	528,489
	Historical Annual Growth 2000 to 2010	0.80%	0.65%	1.15%	1.14%
	Estimated Annual Growth 2010 to 2012	-0.26%	1.18%	1.31%	1.00%
	Projected Annual Growth 2012 to 2019	-0.26%	1.02%	1.13%	0.87%
Households	Current Estimated Households	1,672	32,650	78,781	241,600
	2010 Census Households	1,717	29,299	69,293	218,865
	2000 Census Households	1,530	27,125	60,660	196,295
	Historical Annual Growth 2000 to 2010	1.2%	0.8%	1.3%	1.1%
	Estimated Annual Growth 2010 to 2012	-0.3%	1.1%	1.3%	1.0%
	Projected Annual Growth 2012 to 2019	-0.3%	1.0%	1.1%	0.9%
	Population per Household	2.5	2.6	2.6	2.6
Ethnicity	White	50.7%	54.0%	55.1%	53.0%
	Black or African American	30.4%	26.3%	25.5%	28.6%
	Asian & Pacific Islander	12.8%	12.3%	12.6%	11.8%
	Other Races	6.1%	7.5%	6.8%	6.6%
	Hispanic or Latino Population	7.9%	9.4%	7.8%	7.4%
	Non Hispanic or Latino Population	92.1%	90.6%	92.2%	92.6%

This report was produced using data from private and government sources deemed to be reliable and is herein provided without representation or warranty.