

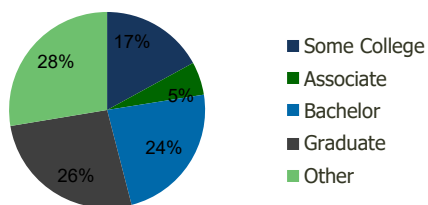
1701-1756-Whole Foods at Wynnewood Wynnewood, PA	1.00 Mile Radius	3.00 Mile Radius	5.00 Mile Radius	10.00 Mile Radius
---	---------------------	---------------------	---------------------	----------------------

Demographics (2019)

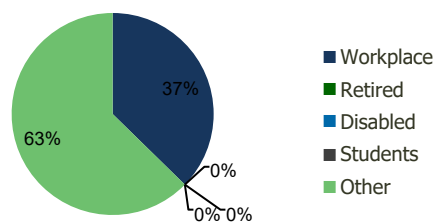
Current Population	17,316	165,698	495,712	1,920,229
Total Daytime Pop	17,957	169,452	477,539	2,433,969
Workplace Pop	9,195	63,240	172,244	1,101,986
Average Household Income	\$181,950	\$120,606	\$92,366	\$86,417
Median Household Income	\$118,278	\$73,919	\$57,403	\$55,623
Total Housing Units	7,323	64,010	198,054	760,681
Median Home Value	\$626,415	\$334,000	\$242,918	\$230,141
Bachelors Degree	31.3%	23.5%	21.4%	19.4%
Graduate Degree	46.6%	26.4%	18.7%	15.9%

Projections (2023)

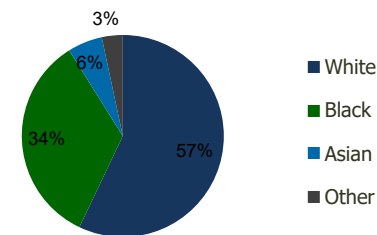
Projected Population	17,970	169,385	510,258	1,990,337
Projected 5 Year Pop Growth	0.7%	0.4%	0.6%	0.7%
Projected Households	7,595	65,547	204,360	792,050
Projected 5 Year Household Growth	0.7%	0.5%	0.6%	0.8%



Education (3-Mile)



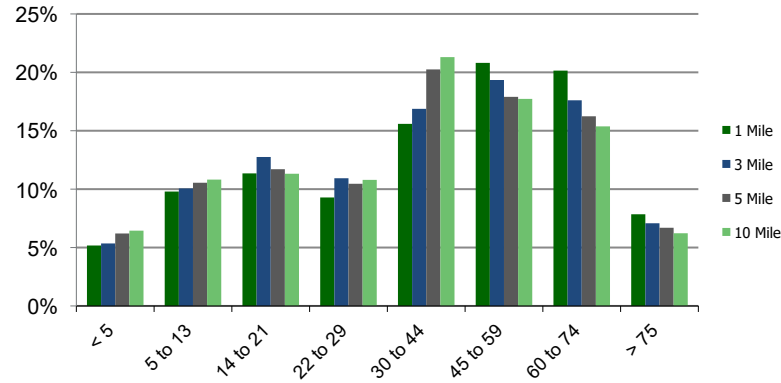
Daytime Population (3-Mile)



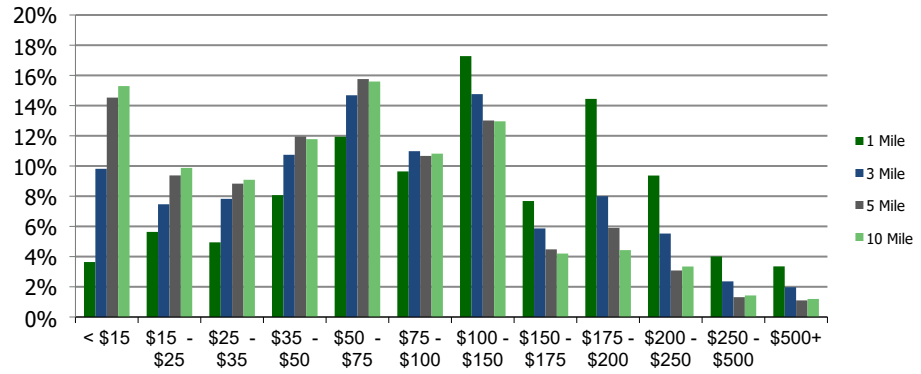
Ethnicity (3-Mile)

This report was produced using data from private and government sources deemed to be reliable and is herein provided without representation or warranty.

Population by Age Range



Household Income by Income Range (\$000)



1701-1756-Whole Foods at Wynnewood, PA	1.00 Mile Radius	3.00 Mile Radius	5.00 Mile Radius	10.00 Mile Radius
---	-------------------------	-------------------------	-------------------------	--------------------------

Population	Current Estimated Population	17,316	165,698	495,712	1,920,229
	2010 Census Population	16,600	162,100	478,805	1,829,789
	2000 Census Population	16,492	167,386	494,161	1,835,666
	Historical Annual Growth 2000 to 2010	0.06%	-0.32%	-0.32%	-0.03%
	Estimated Annual Growth 2010 to 2012	0.43%	0.23%	0.36%	0.50%
	Projected Annual Growth 2012 to 2019	0.74%	0.44%	0.58%	0.72%
Households	Current Estimated Households	7,323	64,010	198,054	760,681
	2010 Census Households	7,033	62,366	190,310	718,679
	2000 Census Households	7,193	63,758	193,494	709,059
	Historical Annual Growth 2000 to 2010	-0.2%	-0.2%	-0.2%	0.1%
	Estimated Annual Growth 2010 to 2012	0.4%	0.3%	0.4%	0.6%
	Projected Annual Growth 2012 to 2019	0.7%	0.5%	0.6%	0.8%
	Population per Household	2.3	2.5	2.4	2.4
Ethnicity	White	84.6%	57.1%	48.4%	48.0%
	Black or African American	5.3%	34.0%	42.5%	38.3%
	Asian & Pacific Islander	7.1%	5.6%	5.5%	6.1%
	Other Races	2.9%	3.4%	3.6%	7.6%
	Hispanic or Latino Population	3.8%	3.3%	3.3%	10.2%
	Non Hispanic or Latino Population	96.2%	96.7%	96.7%	89.8%

This report was produced using data from private and government sources deemed to be reliable and is herein provided without representation or warranty.