

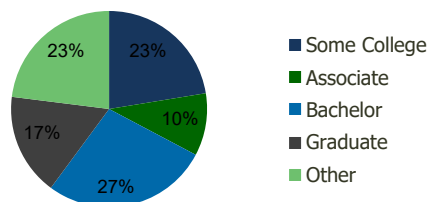
101190-Century Plaza Livonia, MI	1.00 Mile Radius	3.00 Mile Radius	5.00 Mile Radius	10.00 Mile Radius
-------------------------------------	---------------------	---------------------	---------------------	----------------------

Demographics (2020)

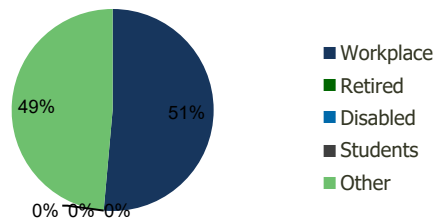
Current Population	11,127	66,291	218,967	831,909
Total Daytime Pop	16,790	116,565	300,784	937,432
Workplace Pop	4,284	59,929	161,689	441,944
Average Household Income	\$102,743	\$103,681	\$99,546	\$90,374
Median Household Income	\$89,492	\$84,752	\$76,382	\$65,991
Total Housing Units	4,274	27,131	93,366	333,748
Median Home Value	\$360,732	\$379,140	\$335,937	\$273,770
Bachelors Degree	29.6%	27.4%	26.3%	21.7%
Graduate Degree	14.5%	16.9%	17.1%	16.1%

Projections (2025)

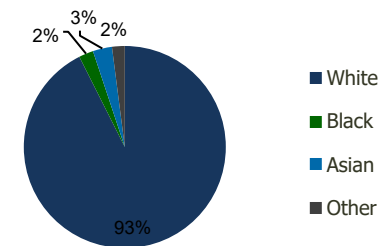
Projected Population	10,929	65,460	217,263	831,140
Projected 5 Year Pop Growth	-0.4%	-0.3%	-0.2%	0.0%
Projected Households	4,192	26,784	92,630	333,437
Projected 5 Year Household Growth	-0.4%	-0.3%	-0.2%	0.0%



Education (3-Mile)



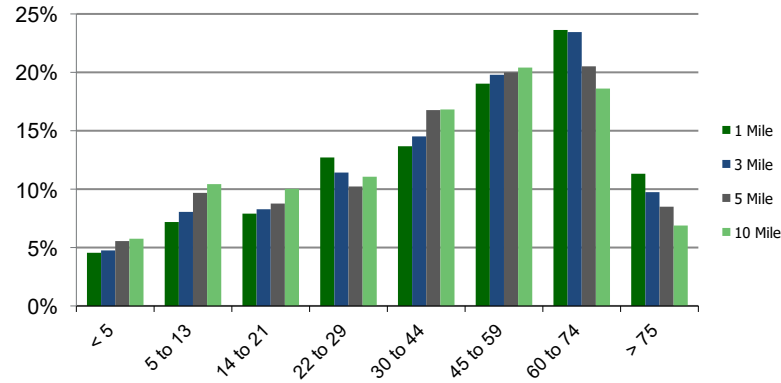
Daytime Population (3-Mile)



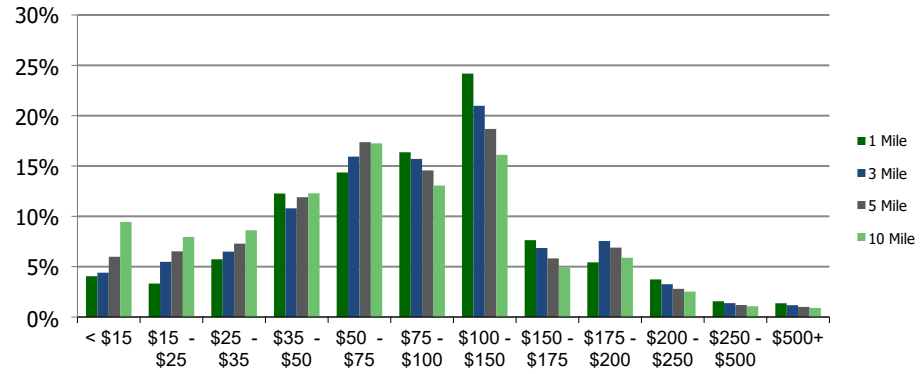
Ethnicity (3-Mile)

This report was produced using data from private and government sources deemed to be reliable and is herein provided without representation or warranty.

Population by Age Range



Household Income by Income Range (\$000)



	1.00 Mile Radius	3.00 Mile Radius	5.00 Mile Radius	10.00 Mile Radius
101190-Century Plaza				
Livonia, MI				

Population	Current Estimated Population	11,127	66,291	218,967	831,909
	2010 Census Population	11,031	65,275	217,091	817,017
	2000 Census Population	11,973	68,418	220,390	837,102
	Historical Annual Growth 2000 to 2010	-0.82%	-0.47%	-0.15%	-0.24%
	Estimated Annual Growth 2010 to 2020	0.08%	0.14%	0.08%	0.17%
	Projected Annual Growth 2020 to 2025	-0.36%	-0.25%	-0.16%	-0.02%
Households	Current Estimated Households	4,274	27,131	93,366	333,748
	2010 Census Households	4,239	26,703	92,519	327,799
	2000 Census Households	4,191	26,001	91,249	327,817
	Historical Annual Growth 2000 to 2010	0.1%	0.3%	0.1%	0.0%
	Estimated Annual Growth 2010 to 2020	0.1%	0.1%	0.1%	0.2%
	Projected Annual Growth 2020 to 2025	-0.4%	-0.3%	-0.2%	0.0%
	Population per Household	2.5	2.4	2.3	2.5
Ethnicity	White	94.8%	92.6%	83.5%	65.3%
	Black or African American	1.6%	2.3%	7.8%	24.6%
	Asian & Pacific Islander	1.6%	3.1%	6.1%	6.7%
	Other Races	2.0%	2.0%	2.6%	3.4%
	Hispanic or Latino Population	1.3%	2.0%	2.5%	2.8%
	Non Hispanic or Latino Population	98.7%	98.0%	97.5%	97.2%

This report was produced using data from private and government sources deemed to be reliable and is herein provided without representation or warranty.