

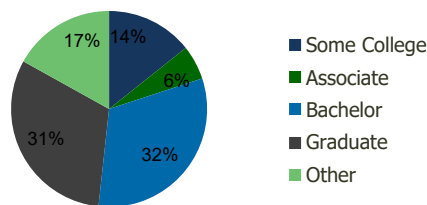
102160-The Shoppes at Wilde Lake Columbia, MD	1.00 Mile Radius	3.00 Mile Radius	5.00 Mile Radius	10.00 Mile Radius
--	---------------------	---------------------	---------------------	----------------------

Demographics (2020)

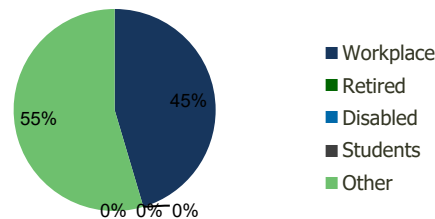
Current Population	18,153	79,327	170,946	533,491
Total Daytime Pop	35,251	102,827	230,109	675,347
Workplace Pop	15,844	46,689	124,402	331,937
Average Household Income	\$108,298	\$130,111	\$144,951	\$131,125
Median Household Income	\$90,085	\$108,203	\$120,127	\$105,335
Total Housing Units	7,947	31,977	65,025	195,962
Median Home Value	\$392,858	\$463,078	\$506,244	\$459,087
Bachelors Degree	29.9%	31.8%	31.5%	28.1%
Graduate Degree	30.5%	31.3%	33.9%	26.8%

Projections (2025)

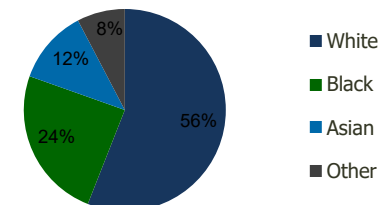
Projected Population	18,777	80,750	175,252	558,464
Projected 5 Year Pop Growth	0.7%	0.4%	0.5%	0.9%
Projected Households	8,237	32,628	66,667	205,250
Projected 5 Year Household Growth	0.7%	0.4%	0.5%	0.9%



Education (3-Mile)



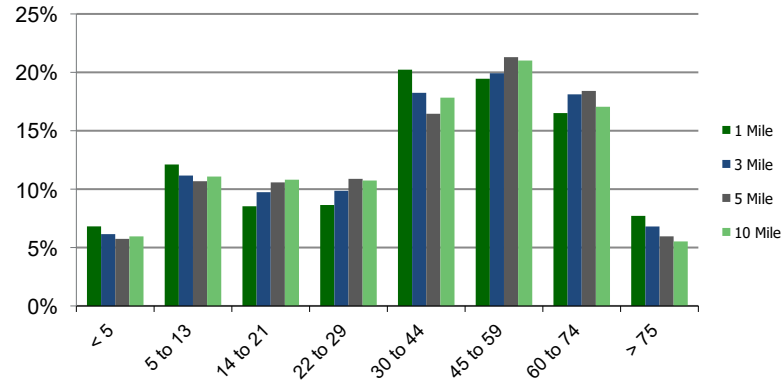
Daytime Population (3-Mile)



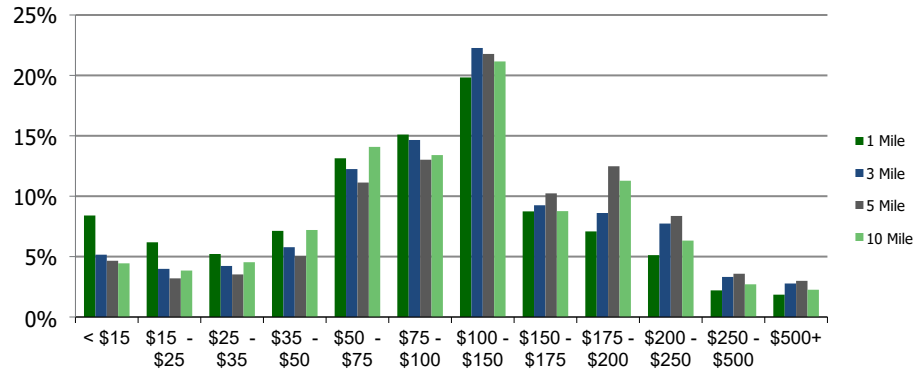
Ethnicity (3-Mile)

This report was produced using data from private and government sources deemed to be reliable and is herein provided without representation or warranty.

Population by Age Range



Household Income by Income Range (\$000)



102160-The Shoppes at Wilde Lake

Columbia, MD

1.00 Mile Radius

3.00 Mile Radius

5.00 Mile Radius

10.00 Mile Radius

	1.00 Mile Radius	3.00 Mile Radius	5.00 Mile Radius	10.00 Mile Radius
Population				
Current Estimated Population	18,153	79,327	170,946	533,491
2010 Census Population	16,076	74,351	156,416	475,590
2000 Census Population	15,325	71,111	143,400	420,015
Historical Annual Growth 2000 to 2010	0.48%	0.45%	0.87%	1.25%
Estimated Annual Growth 2010 to 2020	1.14%	0.60%	0.83%	1.07%
Projected Annual Growth 2020 to 2025	0.68%	0.36%	0.50%	0.92%
Households				
Current Estimated Households	7,947	31,977	65,025	195,962
2010 Census Households	6,965	29,659	59,365	174,235
2000 Census Households	6,420	27,398	53,374	154,085
Historical Annual Growth 2000 to 2010	0.8%	0.8%	1.1%	1.2%
Estimated Annual Growth 2010 to 2020	1.2%	0.7%	0.9%	1.1%
Projected Annual Growth 2020 to 2025	0.7%	0.4%	0.5%	0.9%
Population per Household	2.3	2.5	2.6	2.7
Ethnicity				
White	50.5%	56.0%	58.5%	53.6%
Black or African American	32.3%	24.4%	19.4%	26.1%
Asian & Pacific Islander	8.5%	11.9%	15.6%	13.8%
Other Races	8.7%	7.7%	6.5%	6.6%
Hispanic or Latino Population	9.1%	8.9%	6.8%	7.3%
Non Hispanic or Latino Population	90.9%	91.1%	93.2%	92.7%

This report was produced using data from private and government sources deemed to be reliable and is herein provided without representation or warranty.