

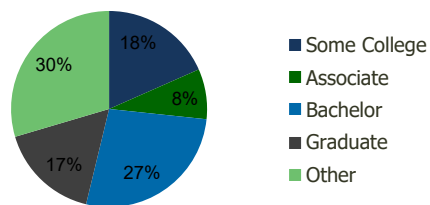
101010-Camino Square Boca Raton, FL	1.00 Mile Radius	3.00 Mile Radius	5.00 Mile Radius	10.00 Mile Radius
----------------------------------------	---------------------	---------------------	---------------------	----------------------

Demographics (2020)

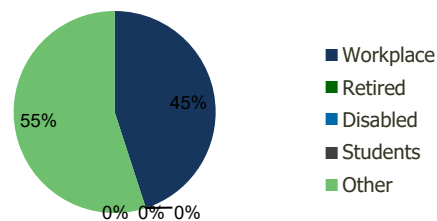
Current Population	15,635	88,171	211,186	678,372
Total Daytime Pop	17,762	156,796	333,642	843,744
Workplace Pop	9,778	70,555	166,970	381,371
Average Household Income	\$145,935	\$111,488	\$105,605	\$98,454
Median Household Income	\$82,634	\$66,204	\$66,150	\$63,465
Total Housing Units	7,567	40,610	96,117	300,263
Median Home Value	\$667,949	\$559,175	\$477,821	\$423,427
Bachelors Degree	34.3%	27.1%	26.2%	24.2%
Graduate Degree	19.0%	16.6%	16.6%	15.2%

Projections (2025)

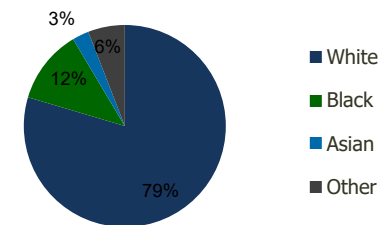
Projected Population	16,934	91,150	217,595	701,339
Projected 5 Year Pop Growth	1.6%	0.7%	0.6%	0.7%
Projected Households	8,219	42,072	99,221	310,603
Projected 5 Year Household Growth	1.7%	0.7%	0.6%	0.7%



Education (3-Mile)



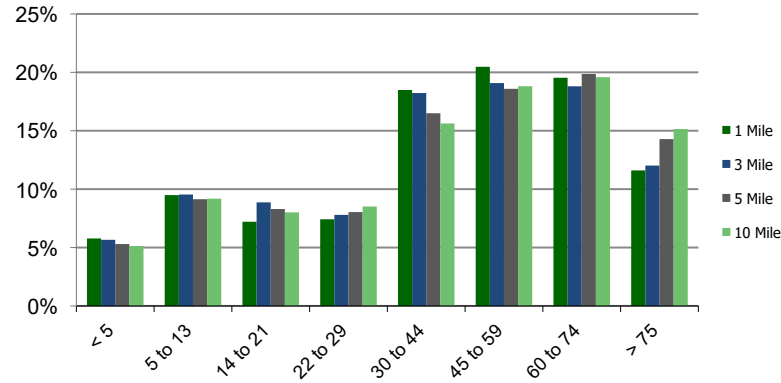
Daytime Population (3-Mile)



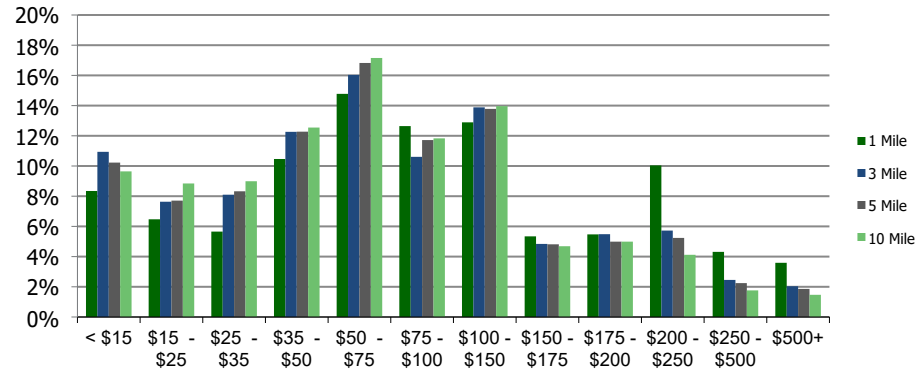
Ethnicity (3-Mile)

This report was produced using data from private and government sources deemed to be reliable and is herein provided without representation or warranty.

Population by Age Range



Household Income by Income Range (\$000)



101010-Camino Square
Boca Raton, FL

1.00 Mile
Radius

3.00 Mile
Radius

5.00 Mile
Radius

10.00 Mile
Radius

	1.00 Mile Radius	3.00 Mile Radius	5.00 Mile Radius	10.00 Mile Radius
Population	Current Estimated Population	15,635	88,171	211,186
	2010 Census Population	12,873	80,149	191,679
	2000 Census Population	12,292	79,086	191,064
	Historical Annual Growth 2000 to 2010	0.46%	0.13%	0.03%
	Estimated Annual Growth 2010 to 2020	1.82%	0.89%	0.91%
	Projected Annual Growth 2020 to 2025	1.61%	0.67%	0.60%
Households	Current Estimated Households	7,567	40,610	96,117
	2010 Census Households	6,192	36,758	86,808
	2000 Census Households	5,677	36,362	87,377
	Historical Annual Growth 2000 to 2010	0.9%	0.1%	-0.1%
	Estimated Annual Growth 2010 to 2020	1.9%	0.9%	1.0%
	Projected Annual Growth 2020 to 2025	1.7%	0.7%	0.6%
	Population per Household	2.1	2.1	2.2
Ethnicity	White	86.7%	79.6%	79.7%
	Black or African American	5.4%	11.9%	12.6%
	Asian & Pacific Islander	2.3%	2.6%	2.3%
	Other Races	5.5%	5.9%	5.4%
	Hispanic or Latino Population	13.8%	14.5%	14.8%
	Non Hispanic or Latino Population	86.2%	85.5%	85.2%

This report was produced using data from private and government sources deemed to be reliable and is herein provided without representation or warranty.