

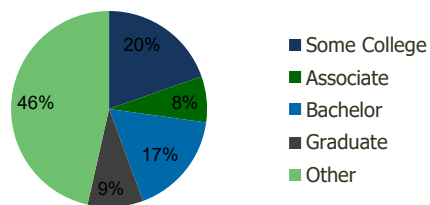
116170-Pompano Pointe S.C. Pompano Beach, FL	1.00 Mile Radius	3.00 Mile Radius	5.00 Mile Radius	10.00 Mile Radius
---	---------------------	---------------------	---------------------	----------------------

Demographics (2020)

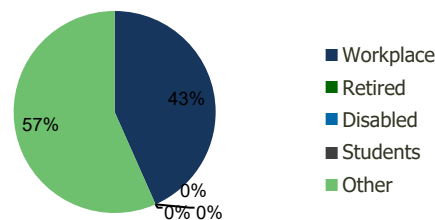
Current Population	14,896	107,772	230,110	873,527
Total Daytime Pop	16,100	104,424	264,398	1,079,022
Workplace Pop	8,167	45,278	134,487	489,924
Average Household Income	\$94,801	\$82,375	\$81,155	\$88,396
Median Household Income	\$61,976	\$56,495	\$54,946	\$59,236
Total Housing Units	6,279	44,427	102,537	370,713
Median Home Value	\$426,116	\$413,541	\$371,484	\$408,590
Bachelors Degree	19.6%	17.2%	19.1%	21.1%
Graduate Degree	10.4%	9.2%	10.8%	12.7%

Projections (2025)

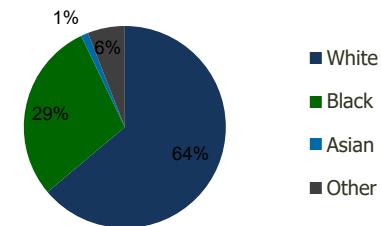
Projected Population	15,092	109,705	232,665	891,889
Projected 5 Year Pop Growth	0.3%	0.4%	0.2%	0.4%
Projected Households	6,346	45,136	103,476	378,624
Projected 5 Year Household Growth	0.2%	0.3%	0.2%	0.4%



Education (3-Mile)



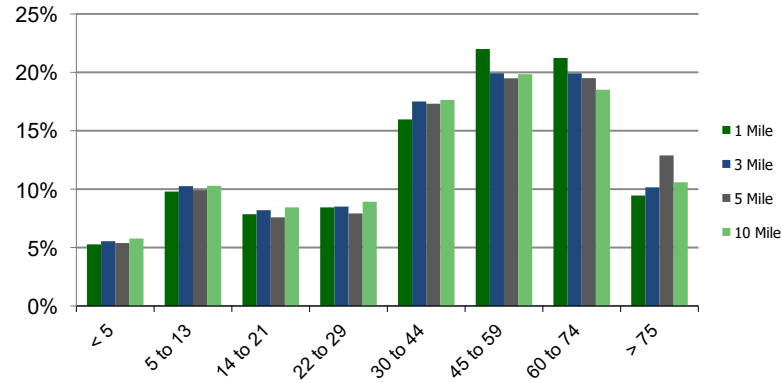
Daytime Population (3-Mile)



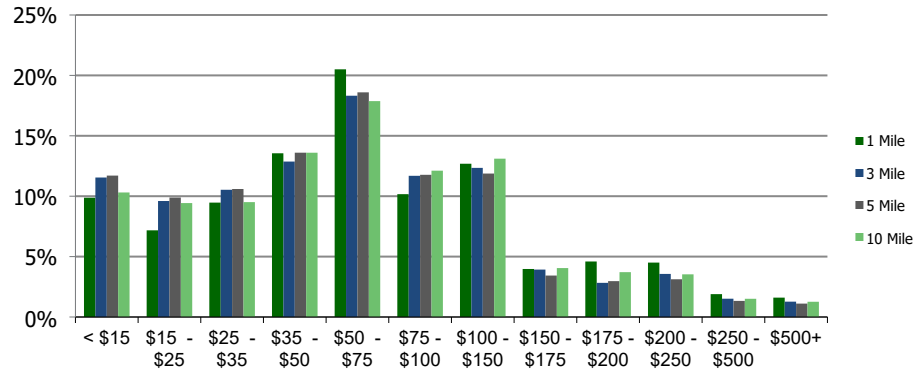
Ethnicity (3-Mile)

This report was produced using data from private and government sources deemed to be reliable and is herein provided without representation or warranty.

Population by Age Range



Household Income by Income Range (\$000)



116170-Pompano Pointe S.C. Pompano Beach, FL	1.00 Mile Radius	3.00 Mile Radius	5.00 Mile Radius	10.00 Mile Radius
--	------------------	------------------	------------------	-------------------

		1.00 Mile Radius	3.00 Mile Radius	5.00 Mile Radius	10.00 Mile Radius
Population	Current Estimated Population	14,896	107,772	230,110	873,527
	2010 Census Population	13,723	97,946	211,781	792,212
	2000 Census Population	14,038	101,234	211,987	780,689
	Historical Annual Growth 2000 to 2010	-0.23%	-0.33%	-0.01%	0.15%
	Estimated Annual Growth 2010 to 2020	0.77%	0.89%	0.78%	0.91%
	Projected Annual Growth 2020 to 2025	0.26%	0.36%	0.22%	0.42%
Households	Current Estimated Households	6,279	44,427	102,537	370,713
	2010 Census Households	5,818	40,482	94,547	335,877
	2000 Census Households	6,062	42,481	97,136	335,251
	Historical Annual Growth 2000 to 2010	-0.4%	-0.5%	-0.3%	0.0%
	Estimated Annual Growth 2010 to 2020	0.7%	0.9%	0.8%	0.9%
	Projected Annual Growth 2020 to 2025	0.2%	0.3%	0.2%	0.4%
	Population per Household	2.4	2.4	2.2	2.3
Ethnicity	White	79.6%	63.9%	68.9%	65.3%
	Black or African American	12.5%	29.0%	23.8%	26.0%
	Asian & Pacific Islander	1.8%	1.2%	1.5%	2.6%
	Other Races	6.2%	6.0%	5.8%	6.1%
	Hispanic or Latino Population	18.6%	17.9%	17.3%	18.7%
	Non Hispanic or Latino Population	81.4%	82.1%	82.7%	81.3%

This report was produced using data from private and government sources deemed to be reliable and is herein provided without representation or warranty.