

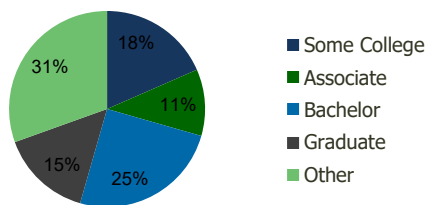
102510-Plantation Commons Plantation, FL	1.00 Mile Radius	3.00 Mile Radius	5.00 Mile Radius	10.00 Mile Radius
---	---------------------	---------------------	---------------------	----------------------

Demographics (2021)

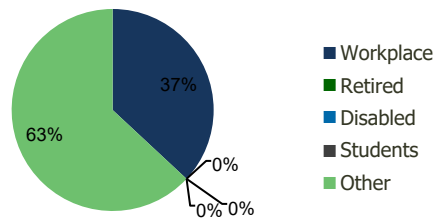
Current Population	10,467	118,636	371,845	1,344,600
Total Daytime Pop	21,986	173,834	386,585	1,430,098
Workplace Pop	10,865	64,204	144,559	606,784
Average Household Income	\$102,524	\$93,662	\$83,850	\$86,560
Median Household Income	\$76,719	\$70,798	\$61,081	\$61,803
Total Housing Units	4,449	48,287	141,840	523,912
Median Home Value	\$519,223	\$516,382	\$443,014	\$477,044
Bachelors Degree	24.1%	25.0%	19.5%	19.5%
Graduate Degree	19.7%	15.1%	11.2%	11.7%

Projections (2026)

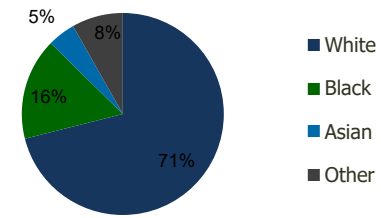
Projected Population	10,596	120,679	378,214	1,366,606
Projected 5 Year Pop Growth	0.2%	0.3%	0.3%	0.3%
Projected Households	4,510	49,159	144,307	533,273
Projected 5 Year Household Growth	0.3%	0.4%	0.3%	0.4%



Education (3-Mile)



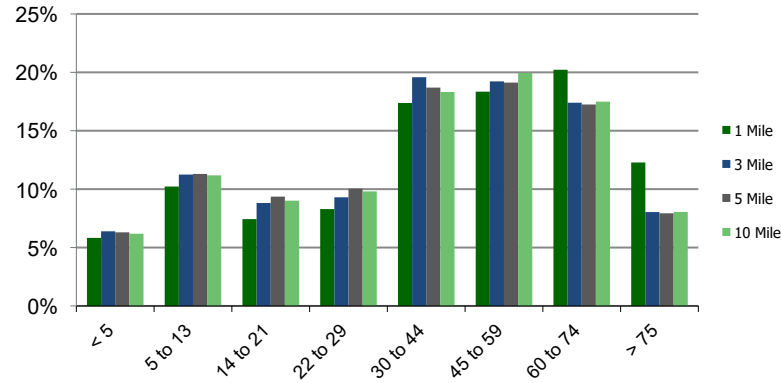
Daytime Population (3-Mile)



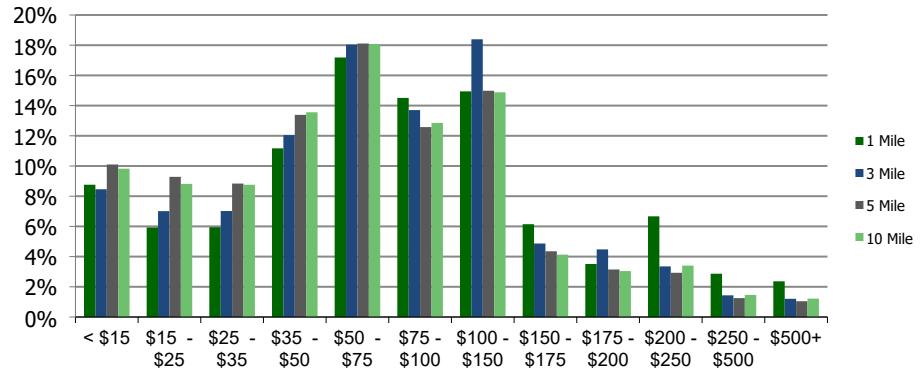
Ethnicity (3-Mile)

This report was produced using data from private and government sources deemed to be reliable and is herein provided without representation or warranty.

Population by Age Range



Household Income by Income Range (\$000)



102510-Plantation Commons

Plantation, FL

1.00 Mile Radius

3.00 Mile Radius

5.00 Mile Radius

10.00 Mile Radius

	1.00 Mile Radius	3.00 Mile Radius	5.00 Mile Radius	10.00 Mile Radius
Population				
Current Estimated Population	10,467	118,636	371,845	1,344,600
2010 Census Population	9,304	107,128	334,904	1,218,682
2000 Census Population	9,555	102,035	326,510	1,155,857
Historical Annual Growth 2000 to 2010	-0.27%	0.49%	0.25%	0.53%
Estimated Annual Growth 2010 to 2020	1.01%	0.87%	0.89%	0.84%
Projected Annual Growth 2020 to 2025	0.24%	0.34%	0.34%	0.33%
Households				
Current Estimated Households	4,449	48,287	141,840	523,912
2010 Census Households	3,944	43,456	127,672	473,054
2000 Census Households	4,007	42,786	127,440	456,058
Historical Annual Growth 2000 to 2010	-0.2%	0.2%	0.0%	0.4%
Estimated Annual Growth 2010 to 2020	1.0%	0.9%	0.9%	0.9%
Projected Annual Growth 2020 to 2025	0.3%	0.4%	0.3%	0.4%
Population per Household	2.3	2.4	2.6	2.5
Ethnicity				
White	76.2%	71.1%	56.3%	57.7%
Black or African American	9.7%	16.3%	32.8%	31.8%
Asian & Pacific Islander	4.5%	4.4%	3.4%	3.2%
Other Races	9.6%	8.2%	7.4%	7.3%
Hispanic or Latino Population	23.1%	28.0%	25.7%	28.1%
Non Hispanic or Latino Population	76.9%	72.0%	74.3%	71.9%

This report was produced using data from private and government sources deemed to be reliable and is herein provided without representation or warranty.