

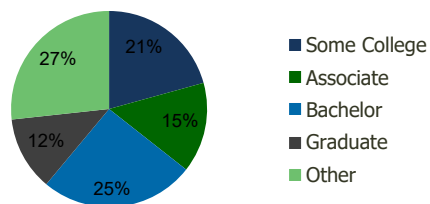
0574-Renaissance Centre Altamonte Springs,FL	1.00 Mile Radius	3.00 Mile Radius	5.00 Mile Radius	10.00 Mile Radius
---	---------------------	---------------------	---------------------	----------------------

Demographics (2018)

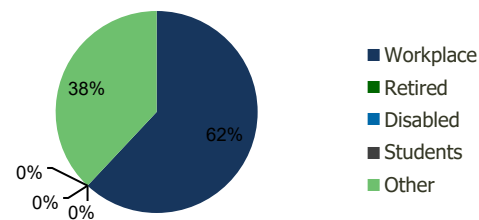
Current Population	16,559	94,678	238,203	784,537
Total Daytime Pop	29,235	142,808	296,703	991,753
Workplace Pop	21,821	88,525	166,083	475,115
Average Household Income	\$64,835	\$73,724	\$77,682	\$78,036
Median Household Income	\$51,201	\$55,326	\$56,555	\$55,935
Total Housing Units	8,016	41,238	99,213	312,478
Median Home Value	\$254,273	\$326,723	\$331,872	\$337,170
Bachelors Degree	24.2%	25.5%	24.4%	22.7%
Graduate Degree	12.3%	12.2%	11.7%	11.7%

Projections (2023)

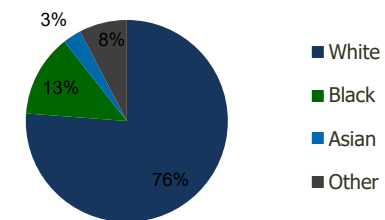
Projected Population	17,204	98,369	247,399	821,393
Projected 5 Year Pop Growth	0.8%	0.8%	0.8%	0.9%
Projected Households	8,341	42,861	103,146	328,097
Projected 5 Year Household Growth	0.8%	0.8%	0.8%	1.0%



Education (3-Mile)



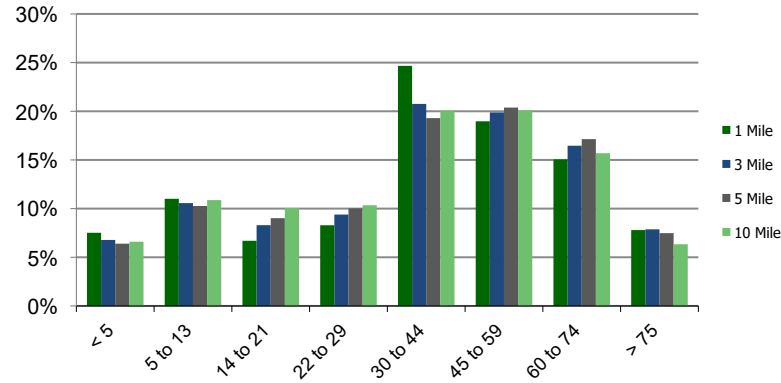
Daytime Population (3-Mile)



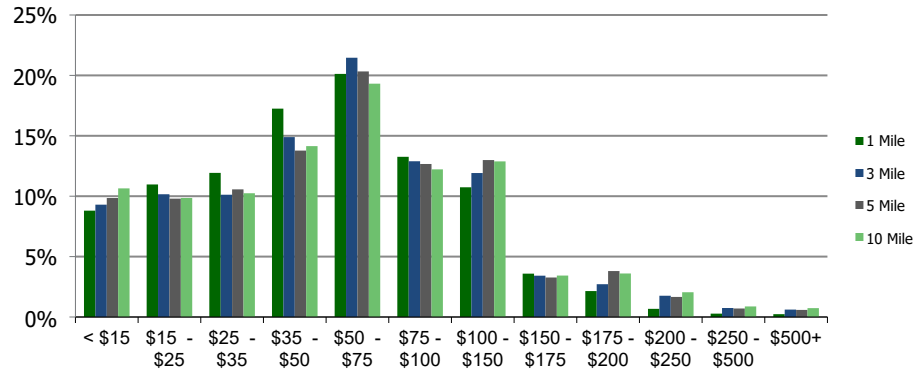
Ethnicity (3-Mile)

This report was produced using data from private and government sources deemed to be reliable and is herein provided without representation or warranty.

Population by Age Range



Household Income by Income Range (\$000)



0574-Renaissance Centre
Altamonte Springs, FL

1.00 Mile
Radius

3.00 Mile
Radius

5.00 Mile
Radius

10.00 Mile
Radius

	1.00 Mile Radius	3.00 Mile Radius	5.00 Mile Radius	10.00 Mile Radius
Population	Current Estimated Population	16,559	94,678	238,203
	2010 Census Population	15,458	87,645	219,129
	2000 Census Population	16,016	86,811	218,009
	Historical Annual Growth 2000 to 2010	-0.35%	0.10%	0.05%
	Estimated Annual Growth 2010 to 2012	0.79%	0.89%	0.96%
	Projected Annual Growth 2012 to 2018	0.77%	0.77%	0.76%
Households	Current Estimated Households	8,016	41,238	99,213
	2010 Census Households	7,466	38,159	91,057
	2000 Census Households	7,563	36,754	88,525
	Historical Annual Growth 2000 to 2010	-0.1%	0.4%	0.3%
	Estimated Annual Growth 2010 to 2012	0.8%	0.9%	1.0%
	Projected Annual Growth 2012 to 2018	0.8%	0.8%	0.8%
	Population per Household	2.0	2.3	2.4
Ethnicity	White	75.1%	76.2%	77.2%
	Black or African American	12.4%	13.2%	12.6%
	Asian & Pacific Islander	3.3%	2.9%	3.2%
	Other Races	9.2%	7.6%	7.0%
	Hispanic or Latino Population	24.3%	20.8%	18.7%
	Non Hispanic or Latino Population	75.7%	79.2%	81.3%

This report was produced using data from private and government sources deemed to be reliable and is herein provided without representation or warranty.