

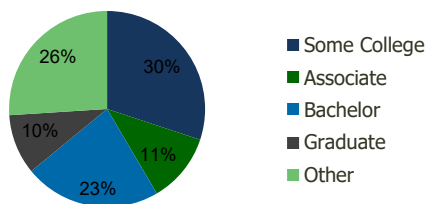
114950-Silverdale Plaza Silverdale, WA	1.00 Mile Radius	3.00 Mile Radius	5.00 Mile Radius	10.00 Mile Radius
---	---------------------	---------------------	---------------------	----------------------

Demographics (2021)

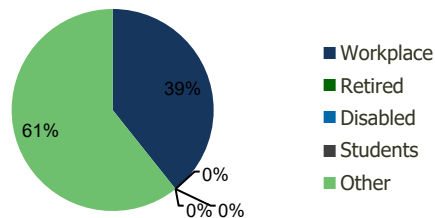
Current Population	4,420	38,689	81,843	212,022
Total Daytime Pop	15,555	34,888	71,133	219,061
Workplace Pop	10,277	13,709	27,859	91,544
Average Household Income	\$82,949	\$97,756	\$91,939	\$96,184
Median Household Income	\$62,350	\$80,391	\$76,132	\$76,476
Total Housing Units	2,172	14,410	30,757	82,004
Median Home Value	\$567,330	\$563,027	\$528,776	\$553,748
Bachelors Degree	16.5%	22.5%	20.5%	22.1%
Graduate Degree	10.0%	9.9%	8.4%	12.3%

Projections (2026)

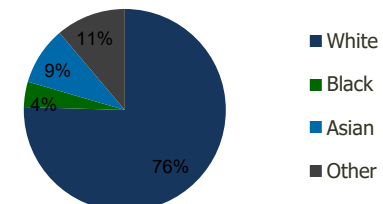
Projected Population	4,464	39,041	83,486	217,245
Projected 5 Year Pop Growth	0.2%	0.2%	0.4%	0.5%
Projected Households	2,193	14,728	31,665	85,199
Projected 5 Year Household Growth	0.2%	0.4%	0.6%	0.8%



Education (3-Mile)



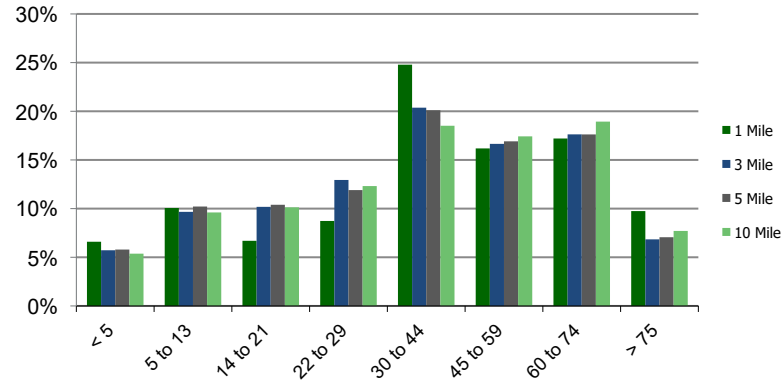
Daytime Population (3-Mile)



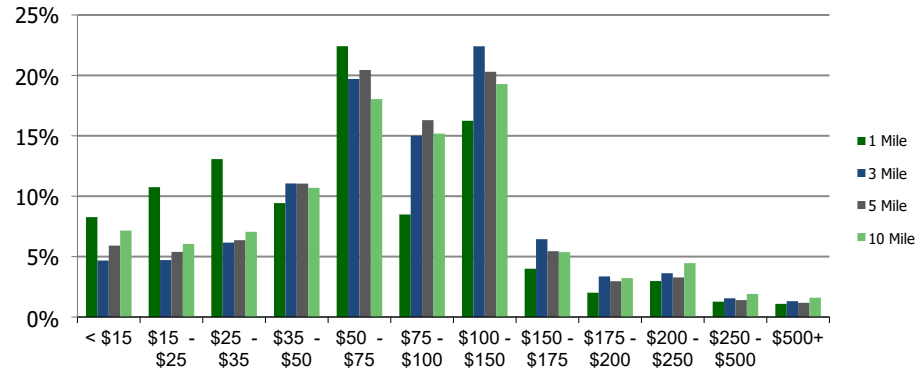
Ethnicity (3-Mile)

This report was produced using data from private and government sources deemed to be reliable and is herein provided without representation or warranty.

Population by Age Range



Household Income by Income Range (\$000)



114950-Silverdale Plaza Silverdale, WA	1.00 Mile Radius	3.00 Mile Radius	5.00 Mile Radius	10.00 Mile Radius
--	-------------------------	-------------------------	-------------------------	--------------------------

Population	Current Estimated Population	4,420	38,689	81,843	212,022
	2010 Census Population	4,343	36,010	75,401	191,119
	2000 Census Population	4,174	36,138	75,098	179,159
	Historical Annual Growth 2000 to 2010	0.40%	-0.04%	0.04%	0.65%
	Estimated Annual Growth 2010 to 2020	0.15%	0.61%	0.70%	0.89%
	Projected Annual Growth 2020 to 2025	0.20%	0.18%	0.40%	0.49%
Households	Current Estimated Households	2,172	14,410	30,757	82,004
	2010 Census Households	2,142	13,613	28,533	74,416
	2000 Census Households	1,783	12,510	26,483	67,257
	Historical Annual Growth 2000 to 2010	1.9%	0.8%	0.7%	1.0%
	Estimated Annual Growth 2010 to 2020	0.1%	0.5%	0.6%	0.8%
	Projected Annual Growth 2020 to 2025	0.2%	0.4%	0.6%	0.8%
	Population per Household	2.0	2.6	2.6	2.5
Ethnicity	White	75.0%	75.5%	75.5%	80.2%
	Black or African American	4.3%	4.1%	4.0%	3.2%
	Asian & Pacific Islander	9.2%	9.3%	8.2%	5.5%
	Other Races	11.6%	11.2%	12.4%	11.1%
	Hispanic or Latino Population	8.0%	7.9%	8.5%	7.6%
	Non Hispanic or Latino Population	92.0%	92.1%	91.5%	92.4%

This report was produced using data from private and government sources deemed to be reliable and is herein provided without representation or warranty.