

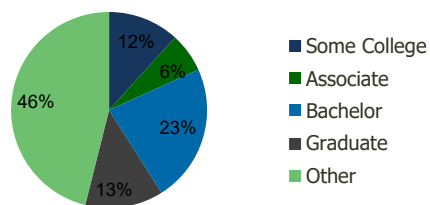
| 1697-Champion Supermarket<br>Woodside,NY | 1.00 Mile<br>Radius | 3.00 Mile<br>Radius | 5.00 Mile<br>Radius | 10.00 Mile<br>Radius |
|--|---------------------|---------------------|---------------------|----------------------|
|--|---------------------|---------------------|---------------------|----------------------|

## Demographics (2018)

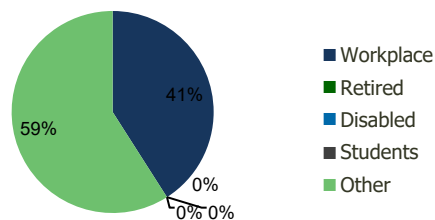
|                          |           |           |           |           |
|--------------------------|-----------|-----------|-----------|-----------|
| Current Population       | 147,900   | 959,418   | 3,008,246 | 7,984,914 |
| Total Daytime Pop        | 104,983   | 802,946   | 4,208,079 | 9,148,008 |
| Workplace Pop            | 36,106    | 328,884   | 2,449,452 | 4,364,230 |
| Average Household Income | \$74,623  | \$88,993  | \$118,609 | \$101,151 |
| Median Household Income  | \$58,981  | \$64,923  | \$71,790  | \$63,235  |
| Total Housing Units      | 54,332    | 357,796   | 1,246,756 | 3,076,938 |
| Median Home Value        | \$538,414 | \$638,624 | \$702,074 | \$622,321 |
| Bachelors Degree         | 21.4%     | 22.7%     | 25.3%     | 21.9%     |
| Graduate Degree          | 10.5%     | 12.9%     | 18.8%     | 15.4%     |

## Projections (2023)

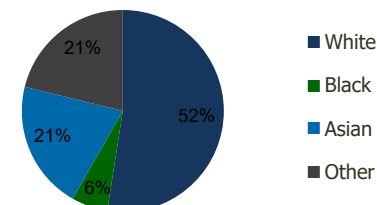
|                                   |         |         |           |           |
|-----------------------------------|---------|---------|-----------|-----------|
| Projected Population              | 149,671 | 993,195 | 3,089,427 | 8,119,290 |
| Projected 5 Year Pop Growth       | 0.2%    | 0.7%    | 0.5%      | 0.3%      |
| Projected Households              | 54,975  | 371,956 | 1,280,266 | 3,135,146 |
| Projected 5 Year Household Growth | 0.2%    | 0.8%    | 0.5%      | 0.4%      |



Education (3-Mile)



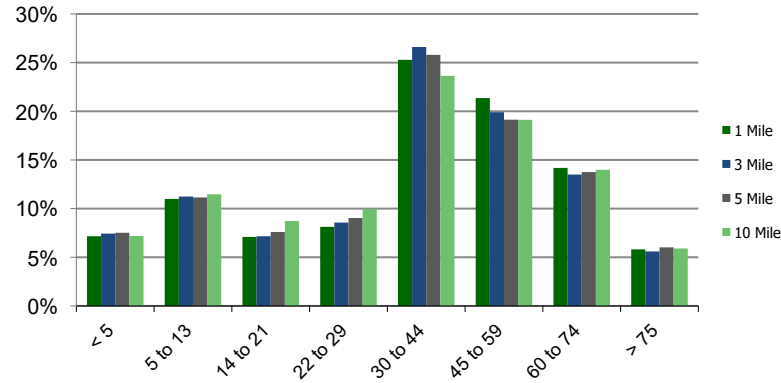
Daytime Population (3-Mile)



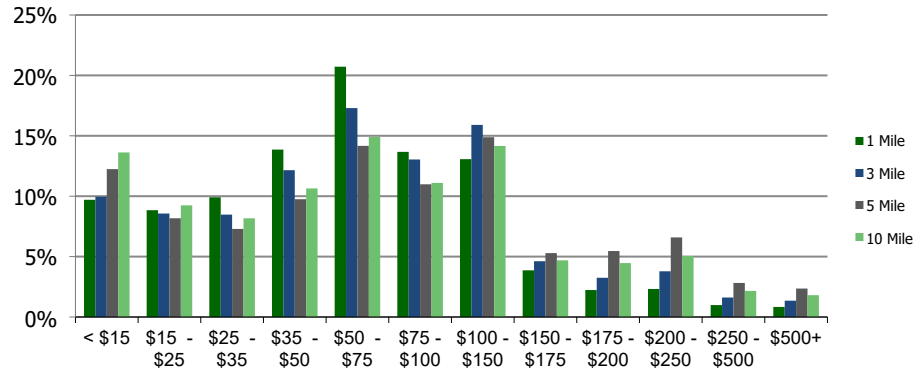
Ethnicity (3-Mile)

This report was produced using data from private and government sources deemed to be reliable and is herein provided without representation or warranty.

**Population by Age Range**



**Household Income by Income Range (\$000)**



**1697-Champion Supermarket**  
Woodside, NY

1.00 Mile  
Radius

3.00 Mile  
Radius

5.00 Mile  
Radius

10.00 Mile  
Radius

|                                       | 1.00 Mile Radius | 3.00 Mile Radius | 5.00 Mile Radius | 10.00 Mile Radius |
|---------------------------------------|------------------|------------------|------------------|-------------------|
| <b>Population</b>                     |                  |                  |                  |                   |
| Current Estimated Population          | 147,900          | 959,418          | 3,008,246        | 7,984,914         |
| 2010 Census Population                | 145,768          | 903,470          | 2,820,386        | 7,602,118         |
| 2000 Census Population                | 147,822          | 907,573          | 2,730,656        | 7,427,553         |
| Historical Annual Growth 2000 to 2010 | -0.14%           | -0.05%           | 0.32%            | 0.23%             |
| Estimated Annual Growth 2010 to 2012  | 0.17%            | 0.69%            | 0.74%            | 0.56%             |
| Projected Annual Growth 2012 to 2018  | 0.24%            | 0.69%            | 0.53%            | 0.33%             |
| <b>Households</b>                     |                  |                  |                  |                   |
| Current Estimated Households          | 54,332           | 357,796          | 1,246,756        | 3,076,938         |
| 2010 Census Households                | 53,430           | 334,997          | 1,166,283        | 2,915,693         |
| 2000 Census Households                | 54,192           | 332,845          | 1,132,057        | 2,824,663         |
| Historical Annual Growth 2000 to 2010 | -0.1%            | 0.1%             | 0.3%             | 0.3%              |
| Estimated Annual Growth 2010 to 2012  | 0.2%             | 0.8%             | 0.8%             | 0.6%              |
| Projected Annual Growth 2012 to 2018  | 0.2%             | 0.8%             | 0.5%             | 0.4%              |
| Population per Household              | 2.7              | 2.7              | 2.4              | 2.5               |
| <b>Ethnicity</b>                      |                  |                  |                  |                   |
| White                                 | 43.6%            | 52.5%            | 51.8%            | 41.9%             |
| Black or African American             | 2.7%             | 5.8%             | 14.4%            | 24.9%             |
| Asian & Pacific Islander              | 35.9%            | 20.6%            | 16.3%            | 13.8%             |
| Other Races                           | 17.8%            | 21.1%            | 17.5%            | 19.4%             |
| Hispanic or Latino Population         | 36.0%            | 38.7%            | 30.9%            | 31.6%             |
| Non Hispanic or Latino Population     | 64.0%            | 61.3%            | 69.1%            | 68.4%             |

This report was produced using data from private and government sources deemed to be reliable and is herein provided without representation or warranty.