

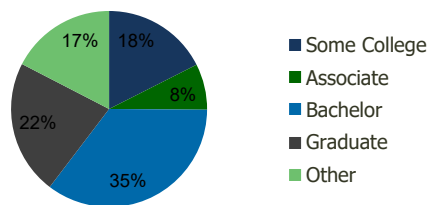
114900-Jefferson Square Seattle, WA	1.00 Mile Radius	3.00 Mile Radius	5.00 Mile Radius	10.00 Mile Radius
--	---------------------	---------------------	---------------------	----------------------

## Demographics (2020)

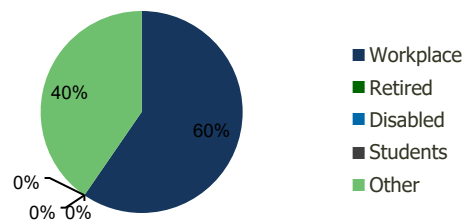
Current Population	27,208	88,681	301,933	932,719
Total Daytime Pop	19,674	131,050	573,107	1,309,939
Workplace Pop	8,029	78,090	399,341	763,179
Average Household Income	\$132,304	\$127,527	\$119,087	\$134,995
Median Household Income	\$110,341	\$101,460	\$89,093	\$97,646
Total Housing Units	13,444	40,642	149,591	429,387
Median Home Value	\$807,380	\$783,582	\$697,944	\$757,815
Bachelors Degree	38.6%	35.2%	32.3%	34.0%
Graduate Degree	25.0%	22.2%	21.6%	25.0%

## Projections (2025)

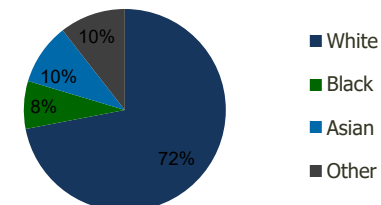
Projected Population	29,106	93,201	330,387	990,974
Projected 5 Year Pop Growth	1.4%	1.0%	1.8%	1.2%
Projected Households	14,483	42,781	167,260	462,858
Projected 5 Year Household Growth	1.5%	1.0%	2.3%	1.5%



Education (3-Mile)



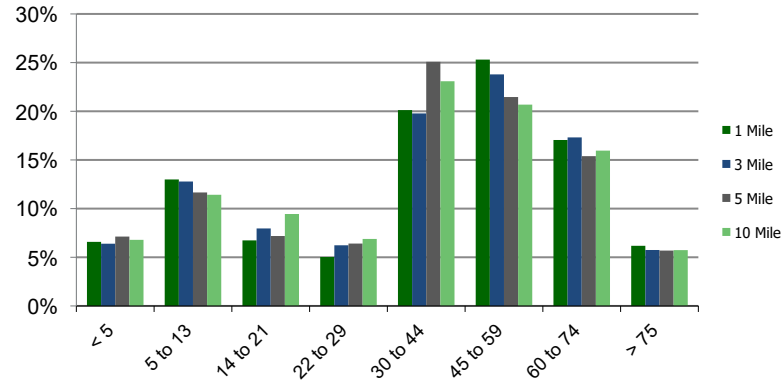
Daytime Population (3-Mile)



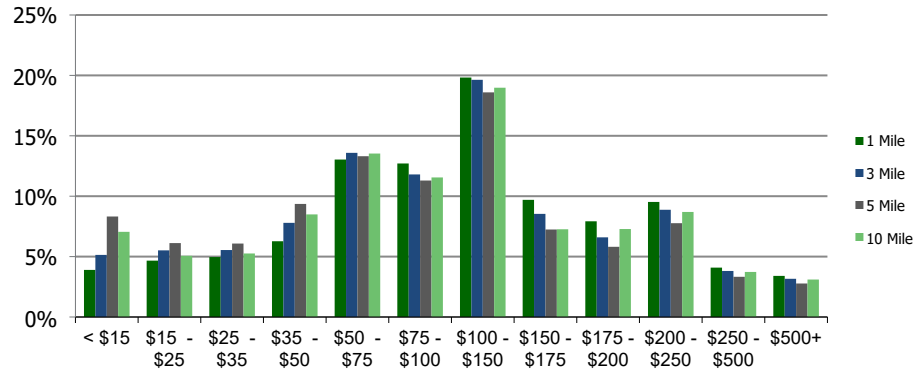
Ethnicity (3-Mile)

This report was produced using data from private and government sources deemed to be reliable and is herein provided without representation or warranty.

**Population by Age Range**



**Household Income by Income Range (\$000)**



**11490-Jefferson Square**  
Seattle, WA

1.00 Mile  
Radius

3.00 Mile  
Radius

5.00 Mile  
Radius

10.00 Mile  
Radius

	1.00 Mile Radius	3.00 Mile Radius	5.00 Mile Radius	10.00 Mile Radius
<b>Population</b>	Current Estimated Population	27,208	88,681	301,933
	2010 Census Population	21,310	74,209	234,401
	2000 Census Population	19,513	70,119	216,077
	Historical Annual Growth 2000 to 2010	0.88%	0.57%	0.82%
	Estimated Annual Growth 2010 to 2020	2.30%	1.67%	2.38%
	Projected Annual Growth 2020 to 2025	1.36%	1.00%	1.82%
<b>Households</b>	Current Estimated Households	13,444	40,642	149,591
	2010 Census Households	10,296	33,846	110,485
	2000 Census Households	9,238	31,674	96,290
	Historical Annual Growth 2000 to 2010	1.1%	0.7%	1.4%
	Estimated Annual Growth 2010 to 2020	2.5%	1.7%	2.9%
	Projected Annual Growth 2020 to 2025	1.5%	1.0%	2.3%
	Population per Household	2.0	2.2	2.0
<b>Ethnicity</b>	White	79.8%	72.0%	58.7%
	Black or African American	3.7%	7.6%	10.9%
	Asian & Pacific Islander	7.1%	9.8%	18.2%
	Other Races	9.5%	10.5%	12.2%
	Hispanic or Latino Population	5.9%	8.0%	9.9%
	Non Hispanic or Latino Population	94.1%	92.0%	90.1%

This report was produced using data from private and government sources deemed to be reliable and is herein provided without representation or warranty.