

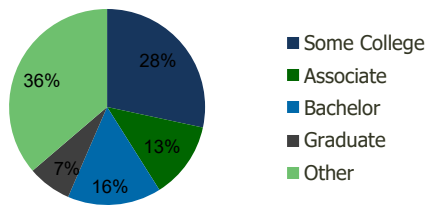
101670-Franklin Park S.C. Spokane, WA	1.00 Mile Radius	3.00 Mile Radius	5.00 Mile Radius	10.00 Mile Radius
--	---------------------	---------------------	---------------------	----------------------

Demographics (2021)

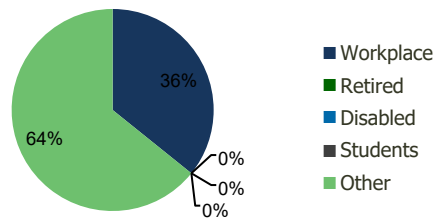
Current Population	21,543	129,176	213,483	396,034
Total Daytime Pop	20,679	130,084	288,482	455,456
Workplace Pop	9,903	46,536	127,152	191,937
Average Household Income	\$56,408	\$62,810	\$68,273	\$76,919
Median Household Income	\$44,555	\$49,215	\$51,353	\$57,335
Total Housing Units	9,431	52,171	88,053	161,682
Median Home Value	\$253,778	\$278,293	\$314,092	\$366,545
Bachelors Degree	12.3%	15.5%	17.8%	19.1%
Graduate Degree	4.5%	7.2%	9.7%	11.3%

Projections (2026)

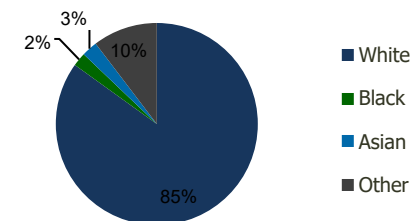
Projected Population	21,857	129,505	215,588	405,270
Projected 5 Year Pop Growth	0.3%	0.1%	0.2%	0.5%
Projected Households	9,617	52,338	89,027	165,554
Projected 5 Year Household Growth	0.4%	0.1%	0.2%	0.5%



Education (3-Mile)



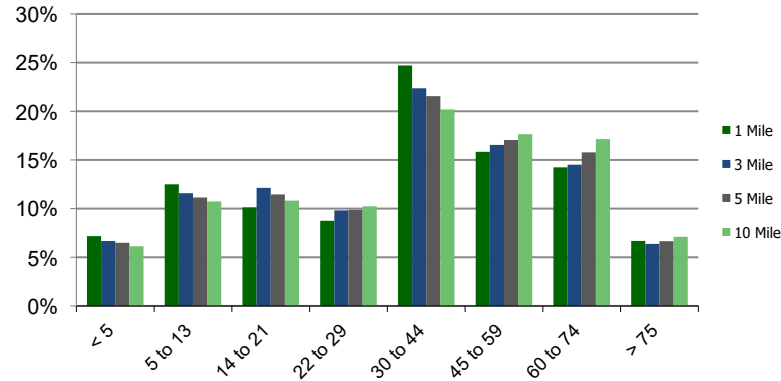
Daytime Population (3-Mile)



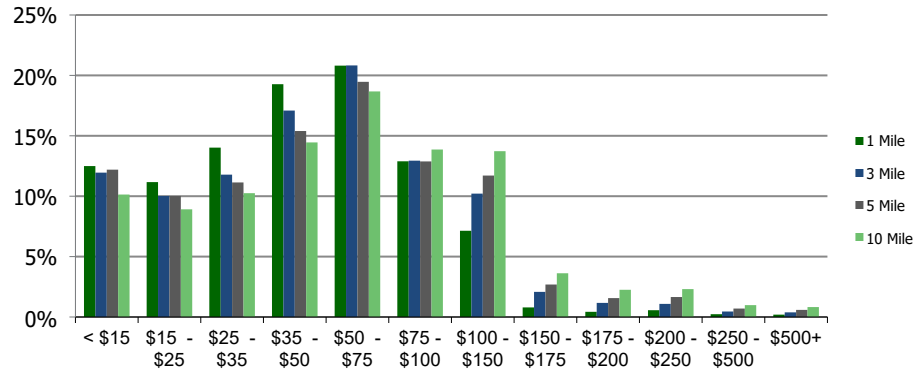
Ethnicity (3-Mile)

This report was produced using data from private and government sources deemed to be reliable and is herein provided without representation or warranty.

Population by Age Range



Household Income by Income Range (\$000)



101670-Franklin Park S.C.
Spokane, WA

1.00 Mile
Radius

3.00 Mile
Radius

5.00 Mile
Radius

10.00 Mile
Radius

	1.00 Mile Radius	3.00 Mile Radius	5.00 Mile Radius	10.00 Mile Radius
Population	Current Estimated Population	21,543	129,176	213,483
	2010 Census Population	19,794	120,574	195,131
	2000 Census Population	18,686	112,904	182,986
	Historical Annual Growth 2000 to 2010	0.58%	0.66%	0.64%
	Estimated Annual Growth 2010 to 2020	0.72%	0.59%	0.77%
	Projected Annual Growth 2020 to 2025	0.29%	0.05%	0.20%
Households	Current Estimated Households	9,431	52,171	88,053
	2010 Census Households	8,523	48,452	79,939
	2000 Census Households	8,306	46,025	75,308
	Historical Annual Growth 2000 to 2010	0.3%	0.5%	0.6%
	Estimated Annual Growth 2010 to 2020	0.9%	0.6%	0.8%
	Projected Annual Growth 2020 to 2025	0.4%	0.1%	0.2%
	Population per Household	2.3	2.4	2.3
Ethnicity	White	82.6%	84.9%	85.6%
	Black or African American	2.5%	2.2%	2.3%
	Asian & Pacific Islander	2.5%	2.5%	2.7%
	Other Races	12.5%	10.4%	9.4%
	Hispanic or Latino Population	6.0%	5.9%	5.7%
	Non Hispanic or Latino Population	94.0%	94.1%	94.3%

This report was produced using data from private and government sources deemed to be reliable and is herein provided without representation or warranty.