

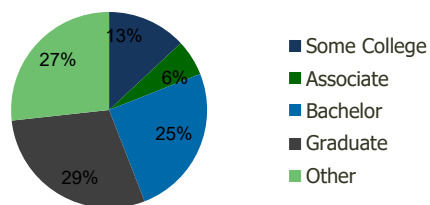
111400-White Plains S.C. White Plains, NY	1.00 Mile Radius	3.00 Mile Radius	5.00 Mile Radius	10.00 Mile Radius
--	---------------------	---------------------	---------------------	----------------------

Demographics (2020)

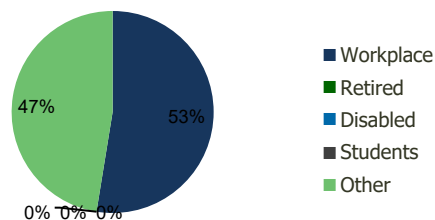
Current Population	40,250	106,909	203,685	815,745
Total Daytime Pop	64,722	163,498	302,833	980,129
Workplace Pop	45,188	85,928	155,455	445,516
Average Household Income	\$114,526	\$164,833	\$195,072	\$163,649
Median Household Income	\$82,867	\$107,393	\$125,199	\$99,750
Total Housing Units	16,987	41,021	74,067	301,882
Median Home Value	\$505,632	\$610,885	\$694,343	\$643,922
Bachelors Degree	21.8%	25.1%	27.5%	24.8%
Graduate Degree	22.0%	29.2%	32.3%	25.5%

Projections (2025)

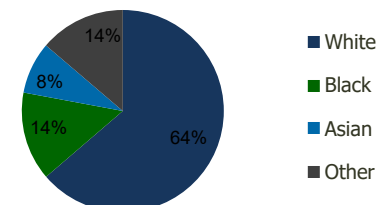
Projected Population	40,678	107,897	205,650	822,823
Projected 5 Year Pop Growth	0.2%	0.2%	0.2%	0.2%
Projected Households	17,157	41,403	74,766	304,612
Projected 5 Year Household Growth	0.2%	0.2%	0.2%	0.2%



Education (3-Mile)



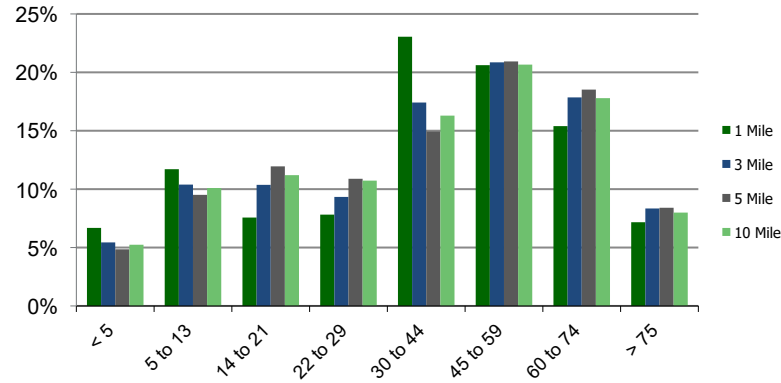
Daytime Population (3-Mile)



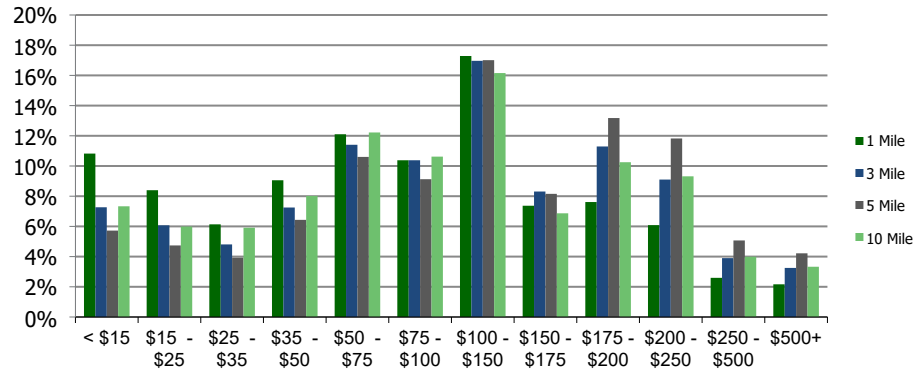
Ethnicity (3-Mile)

This report was produced using data from private and government sources deemed to be reliable and is herein provided without representation or warranty.

Population by Age Range



Household Income by Income Range (\$000)



111400-White Plains S.C.		1.00 Mile Radius	3.00 Mile Radius	5.00 Mile Radius	10.00 Mile Radius
White Plains, NY					

Population	Current Estimated Population	40,250	106,909	203,685	815,745
	2010 Census Population	39,454	104,730	198,495	794,986
	2000 Census Population	35,686	98,025	188,769	776,573
	Historical Annual Growth 2000 to 2010	1.01%	0.66%	0.50%	0.23%
	Estimated Annual Growth 2010 to 2020	0.19%	0.19%	0.24%	0.24%
	Projected Annual Growth 2020 to 2025	0.21%	0.18%	0.19%	0.17%
Households	Current Estimated Households	16,987	41,021	74,067	301,882
	2010 Census Households	16,801	40,314	72,341	293,918
	2000 Census Households	14,750	37,637	69,335	288,190
	Historical Annual Growth 2000 to 2010	1.3%	0.7%	0.4%	0.2%
	Estimated Annual Growth 2010 to 2020	0.1%	0.2%	0.2%	0.2%
	Projected Annual Growth 2020 to 2025	0.2%	0.2%	0.2%	0.2%
	Population per Household	2.3	2.5	2.6	2.6
Ethnicity	White	54.9%	63.7%	69.8%	64.7%
	Black or African American	15.6%	14.2%	10.4%	16.2%
	Asian & Pacific Islander	8.1%	8.3%	9.3%	6.5%
	Other Races	21.5%	13.8%	10.5%	12.5%
	Hispanic or Latino Population	36.8%	24.3%	18.1%	22.2%
	Non Hispanic or Latino Population	63.2%	75.7%	81.9%	77.8%

This report was produced using data from private and government sources deemed to be reliable and is herein provided without representation or warranty.