

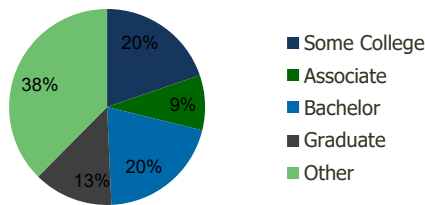
116950-Key Food - Central Avenue Valley Stream, NY	1.00 Mile Radius	3.00 Mile Radius	5.00 Mile Radius	10.00 Mile Radius
---	---------------------	---------------------	---------------------	----------------------

Demographics (2021)

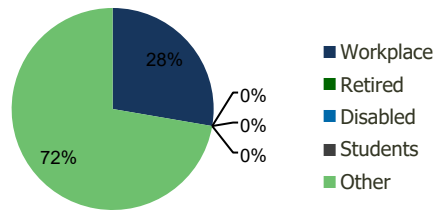
Current Population	35,626	353,585	856,682	3,007,371
Total Daytime Pop	23,826	246,412	740,267	2,679,721
Workplace Pop	5,994	68,261	267,868	907,434
Average Household Income	\$127,786	\$120,577	\$118,921	\$108,891
Median Household Income	\$115,973	\$101,302	\$92,472	\$80,684
Total Housing Units	10,643	112,775	279,579	1,014,901
Median Home Value	\$562,657	\$606,942	\$624,989	\$638,490
Bachelors Degree	23.9%	20.5%	20.9%	19.8%
Graduate Degree	14.6%	13.1%	14.3%	13.5%

Projections (2026)

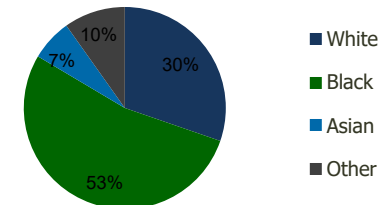
Projected Population	35,760	353,245	856,941	3,009,057
Projected 5 Year Pop Growth	0.1%	0.0%	0.0%	0.0%
Projected Households	10,684	112,656	279,684	1,015,907
Projected 5 Year Household Growth	0.1%	0.0%	0.0%	0.0%



Education (3-Mile)



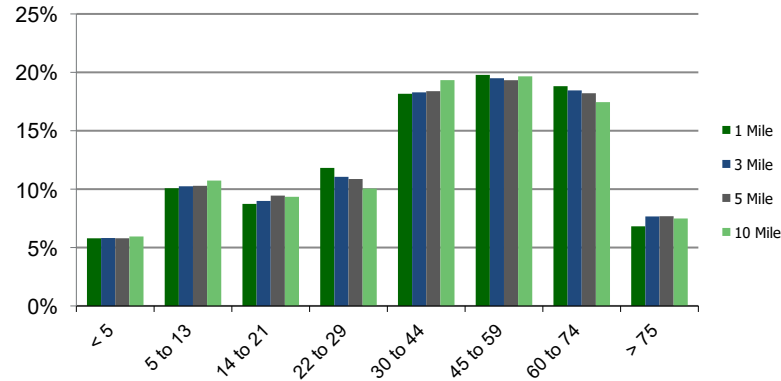
Daytime Population (3-Mile)



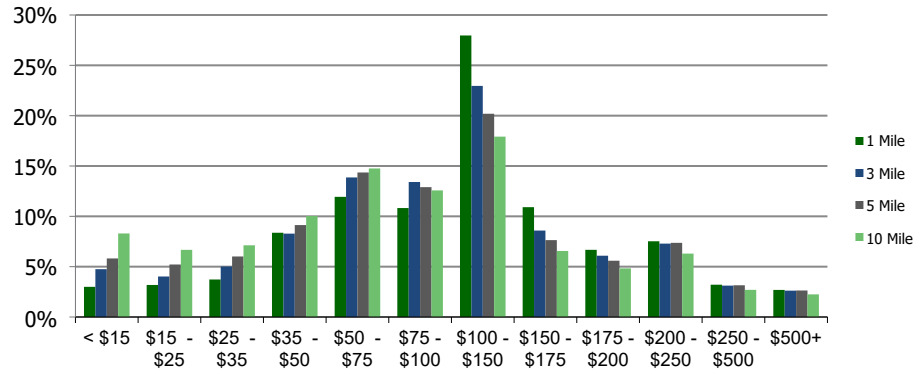
Ethnicity (3-Mile)

This report was produced using data from private and government sources deemed to be reliable and is herein provided without representation or warranty.

Population by Age Range



Household Income by Income Range (\$000)



116950-Key Food - Central Avenue Valley Stream, NY

1.00 Mile
Radius

3.00 Mile
Radius

5.00 Mile
Radius

10.00 Mile
Radius

	1.00 Mile Radius	3.00 Mile Radius	5.00 Mile Radius	10.00 Mile Radius
Population				
Current Estimated Population	35,626	353,585	856,682	3,007,371
2010 Census Population	33,854	340,306	823,662	2,877,186
2000 Census Population	33,309	346,356	824,223	2,844,895
Historical Annual Growth 2000 to 2010	0.16%	-0.18%	-0.01%	0.11%
Estimated Annual Growth 2010 to 2020	0.44%	0.33%	0.34%	0.38%
Projected Annual Growth 2020 to 2025	0.08%	-0.02%	0.01%	0.01%
Households				
Current Estimated Households	10,643	112,775	279,579	1,014,901
2010 Census Households	10,114	108,710	268,895	969,909
2000 Census Households	10,285	110,930	271,841	966,104
Historical Annual Growth 2000 to 2010	-0.2%	-0.2%	-0.1%	0.0%
Estimated Annual Growth 2010 to 2020	0.4%	0.3%	0.3%	0.4%
Projected Annual Growth 2020 to 2025	0.1%	0.0%	0.0%	0.0%
Population per Household	3.3	3.1	3.0	2.9
Ethnicity				
White	23.0%	30.3%	34.9%	42.1%
Black or African American	53.4%	53.2%	39.3%	23.4%
Asian & Pacific Islander	11.3%	6.6%	13.5%	18.5%
Other Races	12.2%	9.8%	12.3%	16.1%
Hispanic or Latino Population	17.2%	13.3%	15.0%	24.4%
Non Hispanic or Latino Population	82.8%	86.7%	85.0%	75.6%

This report was produced using data from private and government sources deemed to be reliable and is herein provided without representation or warranty.